

ALPINE FIRE PROTECTION DISTRICT BOARD OF DIRECTORS MEETING

Tuesday, November 18, 2025

5:00 P.M.

ALPINE FIRE STATION 17
1364 TAVERN ROAD, ALPINE, CA 91901

ACCESSIBILITY TO MEETINGS

In compliance with the Americans with Disabilities Act, individuals requiring disability-related accommodations, including auxiliary aids or services, to participate in a public meeting of the Board of Directors may request such accommodations by contacting the Clerk of the Board at (619) 445-2635. Requests must be made at least 24 hours prior to the meeting.

AVAILABILITY OF MEETING MATERIALS

Pursuant to Government Code Section 54957.5, any written materials distributed to a majority of the Board in connection with an agenda item will be available for public inspection at the Alpine Fire Protection District Administration Office, 1364 Tavern Road, Alpine, CA 91901, during regular business hours. Agenda packets may also be requested by emailing admin@alpinefire.org.

PUBLIC COMMENT

Members of the public may address the Board during the public comment period on any item listed on the agenda or on matters within the jurisdiction of the Alpine Fire Protection District. Board members may respond by asking clarifying questions, referring matters to staff, or requesting future reports. Each speaker is limited to **three (3) minutes** per topic.

CERTIFICATION OF POSTING

I certify that a copy of the foregoing Agenda was posted near the regular meeting place of the Board of Directors of Alpine Fire Protection District, said time being at least 72-hours in advance of the Regular Meeting of the Board of Directors. (*Govt. Code Section 54954.2*)



Jennifer Davis, Clerk of the Board



ALPINE FIRE PROTECTION DISTRICT BOARD OF DIRECTORS MEETING
Tuesday, November 18, 2025
5:00 P.M.

The following Director(s) will be attending the meeting via teleconference from the following location(s):
Director Willis – Bel Jou Hotel, Rm 407, La Pansee, Castries, St. Lucia

- 1. CALL TO ORDER AND DETERMINATION OF A QUORUM**
- 2. PLEDGE OF ALLEGIANCE AND INVOCATION**
- 3. APPROVAL OF AGENDA**
- 4. EMPLOYEE RECOGNITION CEREMONY**
- 5. PUBLIC COMMENT AND DISCUSSION**
- 6. CONSENT CALENDAR**
 - 6.1. Board Meeting Minutes – October 21, 2025
 - 6.2. District Financial Reports
 - 6.3. Monthly Incident Report
- 7. PUBLIC HEARING #2 – ORDINANCE NO. 2026-01: AN ORDINANCE OF THE ALPINE FIRE PROTECTION DISTRICT WHICH ADOPTS THE 2025 CALIFORNIA FIRE CODE AND THE 2024 INTERNATIONAL FIRE CODE WITH CERTAIN AMENDMENTS, ADDITIONS, AND DELETIONS**
- 8. PUBLIC HEARING #2 – ORDINANCE NO. 2026-02: AN ORDINANCE OF THE ALPINE FIRE PROTECTION DISTRICT WHICH ADOPTS THE 2025 CALIFORNIA WILDLAND URBAN INTERFACE CODE AND THE 2024 INTERNATIONAL WILDLAND URBAN INTERFACE CODE WITH CERTAIN AMENDMENTS, ADDITIONS, AND DELETIONS**
- 9. AGENDA ITEMS**
 - 9.1. Adoption of Ordinance No. 2026-01
 - 9.2. Adoption of Ordinance No. 2026-02
 - 9.3. Acceptance of Fiscal Year 2024/2025 Financial Audit
 - 9.4. Discussion and Possible Action: Staff Recommendation to Enter into a Contract with Southwest Mechanical Services for the Station 17 HVAC Project.
- 10. REPORTS**
 - 10.1. Board of Directors
 - 10.2. Fire Chief
 - 10.3. Fire Marshal
 - 10.4. Alpine Firefighters Association – Local 2638
- 11. CLOSED SESSION**
 - 11.1. **Conference with Labor Negotiators (Gov. Code Section 54957)**
District Representatives: Director Taylor, Director Paskle
Unrepresented Employee: Assistant Fire Chief
- 12. Approval of MOU between the Alpine Fire Protection District and the Assistant Fire Chief**
- 13. ADJOURNMENT**

NEXT MEETING: Tuesday, December 16, 2025
5:00 P.M. – 1364 TAVERN ROAD, ALPINE, CA 91901

ALPINE FIRE PROTECTION DISTRICT BOARD OF DIRECTORS MEETING
Tuesday, October 21, 2025
5:00 P.M.

*****MINUTES*****

The following Director(s) will be attending the meeting via teleconference:

Director Taylor – 9035 Madison Blvd, Madison, AL 35758

1. CALL TO ORDER AND DETERMINATION OF A QUORUM

Meeting called to order at 5:00 pm by: Director Willis

Roll Call Vote: Willis, Mehrer, Paskle, Cromwell and Taylor (Via Teleconference)

2. PLEDGE OF ALLEGIANCE AND INVOCATION

Pledge of Allegiance by: Rancho Santa Fe Battalion Chief Greg O’Gorman

Invocation by: Director Willis

The Board observed a moment of silence for Former Board Member Jim Easterling

3. APPROVAL OF AGENDA

Motion to approve agenda by: Director Mehrer

Second by: Director Paskle

Roll Call Vote: Willis, Mehrer, Paskle, Cromwell and Taylor (Via Teleconference)

4. PUBLIC COMMENT AND DISCUSSION

None

5. PRESENTATION: FY 24/25 FINANCIAL AUDIT – Nigro & Nigro

Presented by Audit Manager Stacy Macias

Fire Chief Boggeln wanted to extend a big thank you to Debbie and Jennifer for all the hard work on the audit along with an additional/separate audit being completed by CalPERS.

Next meeting we will have the audit as an action item for acceptance by the board.

6. CONSENT CALENDAR

Motion to approve consent calendar by: Director Mehrer

Second by: Director Paskle

Discussion: Correction on the September 16th Board Minutes, under the Fire Marshall reports last sentence should read as Operation Chip Drop is the same day as the Alpine Kiwanis Soap Box Derby.

Roll Call Vote: Willis, Mehrer, Paskle, Cromwell and Taylor (Via Teleconference)

6.1. Board Meeting Minutes – September 16, 2025

6.2. Special Board Meeting Minutes – September 29, 2025

6.3. District Financial Reports

6.4. Monthly Incident Report

ALPINE FIRE PROTECTION DISTRICT BOARD OF DIRECTORS MEETING
Tuesday, October 21, 2025
5:00 P.M.

7. PUBLIC HEARING #1 OPENED 5:14 PM

ORDINANCE NO. 2026-01: AN ORDINANCE OF THE ALPINE FIRE PROTECTION DISTRICT WHICH ADOPTS THE 2025 CALIFORNIA FIRE CODE AND THE 2024 INTERNATIONAL FIRE CODE WITH CERTAIN AMENDMENTS, ADDITIONS, AND DELETIONS

Fire Marshal McBroom discusses the changes for the 2026 ordinance.

PUBLIC HEARING #1 CLOSED 5:25 PM

8. PUBLIC HEARING #1 OPENED 5:25 PM

ORDINANCE NO. 2026-02: AN ORDINANCE OF THE ALPINE FIRE PROTECTION DISTRICT WHICH ADOPTS THE 2025 CALIFORNIA WILDLAND URBAN INTERFACE CODE AND THE 2024 INTERNATIONAL WILDLAND URBAN INTERFACE CODE WITH CERTAIN AMENDMENTS, ADDITIONS, AND DELETIONS

Fire Marshal McBroom discusses the amendments, additions, and deletions for the 2026 ordinance.

PUBLIC HEARING #1 CLOSED 5:31PM

9. AGENDA ITEMS

9.1. 2025 End of Year Meeting Schedule

Fire Chief Boggeln noted that the next meeting is scheduled for November 18th; however, Director Willis will be out of town. Chief Boggeln will be unavailable for the December 16th meeting. If necessary, the December meeting may be rescheduled to an earlier date in the month or canceled if there are no agenda items requiring discussion. Please advise if any additional vacation or scheduling conflicts are planned for those dates.

10. REPORTS

10.1. Board of Directors

Nothing to report.

10.2. Fire Chief

In the Directors boxes you should have received a letter from Supervisor Anderson inviting Directors to a reception on December 1st if you are interested in going you can RSVP through the link on there. Former Board Member Jim Easterling memorial service is scheduled for December 12th, information will be forwarded. Location is down in San Diego, Fire Chief will be out of town but we will try to send an engine down to represent the District. Last Wednesday he spoke with Rancho Palo Verde Homeowners Association regarding Zone 0 and evacuations. It was well received, answered a lot of questions. Fire Chief will be out of town November 7th-10th.

10.3. Fire Marshal

Appreciation to Chief Boggeln for going to Rancho Palo Verde Homeowners Association giving a good update that it was well received and we enjoy hearing good feedback from the community members. Spoke with a lot of homeowners during the Open House, they are embracing and understanding what Zone 0 is and why its there. Fire Marshal had a conversation with Cal Fire Division Chiefs regarding some language that is misappropriately interrupted under the AB38 Real Estate Disclosure law. There is a conference up in Redding this week, hoping to have some clarity on the

ALPINE FIRE PROTECTION DISTRICT BOARD OF DIRECTORS MEETING
Tuesday, October 21, 2025
5:00 P.M.

issue soon. Unfortunately, the CA Association of Realtors document that was sent out is using an incorrect definition term so any mobile home, modular home or condo that is sold of real property is subject to an AB38 real estate disclosure. We found this out after several lengthy conversations. Fire Marshall will be working with all the local agents and anyone in the process of doing real estate transactions. We are still conducting defensible space inspections. Recenety re-inspected three parcels that had a total of five completely dead 60 foot Aleppo pine trees. Antons Tree service came out and generously cut down all those trees at no cost to the homeowner. The agreement was they take the wood, they leave all the piles that will be chipped tomorrow. Pending right of entries for Alpine Creek Hazardous fuels reduction phase 2 which is \$525,000 project that will commence after the last four parcels within the area of the alpine creek. We have five additional grants to look for additional funding.

- 10.4. **Alpine Firefighters Association – Local 2638**
Open House was well attended, thanks for Firefighter Setter and Bailey for coordinating it. Dates for next year are in the works.

11. CLOSED SESSION - Board entered Closed Session at 5:37 pm

- 11.1. **Public Employee Appointment (Gov. Code Section 54957)**
Assistant Fire Chief
Out of closed session at 6:00 pm
Interview conducted; No Action Taken

12. ADJOURNMENT: 6:01 pm

Motion to Adjourn by: Director Mehrer Second by: Director Paskle
Roll Call Quorum: Willis, Mehrer, Paskle, Cromwell and Taylor (Via Teleconference)

Minutes Approved:	
_____	_____
Tim Mehrer, Board Secretary	Date

NEXT MEETING: Tuesday, November 18, 2025
5:00 P.M. – 1364 TAVERN ROAD, ALPINE, CA 91901

AFPD Alpine Fire Protection District

Balance Sheet

11/10/25

As of October 31, 2025

Accrual Basis

	Oct 31, 25
ASSETS	
Current Assets	
Checking/Savings	
CA Class FMV	-101.36
General County Fund FMV	682.36
Mitigation County Fund FMV	2.59
1000 · COUNTY OF SAN DIEGO	
1000.01 · Gen. 310100-47500	
General	245,007.05
Total 1000.01 · Gen. 310100-47500	245,007.05
1000.02 · Mitig.310135-47505	
SD County Mitigation Fund	5,428.88
Allocated Capital Apparatus	49,863.08
Assigned for Capital Accrual	16,508.10
Total 1000.02 · Mitig.310135-47505	71,800.06
Total 1000 · COUNTY OF SAN DIEGO	316,807.11
1001 · OTHER A/C'S	
1001.04 · CB&T-(Workers Comp)	85,704.85
1001.07 · CB&T Checking - 8473	96,480.13
1101.06 · CB&T Money Plus	
General	4,866.81
Total 1101.06 · CB&T Money Plus	4,866.81
1101.09 · CB&T Savings (Grant)	502.26
1101.10 · CALIFORNIA CLASS	
CA-01-0075-0001 Enhanced Cash	1,243,613.13
CA-01-0075-006 1%	18,938.70
CA-01-0075 -0001 AFPD-Prime	
Committed Compensated Absenses	30,000.00
Committed Capital Apparatus Fnd	1,850,000.00
Assigned Compensated Absenses	30,000.00
Assigned Budget Stab. Reserve	182,000.00
Allocated Capital Apparatus	46,750.00
Allocated Capital Building	173,500.00
Allocated Equipment Replacement	75,935.00
Allocated Unfunded Liability	137,034.58
Committed Building Fund	336,862.79
Committed Economic Stab. Fund	281,187.25
Committed Equipment Replacement	255,178.60
Committed OPEB (Retiree Health)	25,000.00
Committed Unfunded Liability	1,001,738.70
General	-631,522.53
Total CA-01-0075 -0001 AFPD-Prime	3,793,664.39
CA-01-0075-005 Sunrise Pwr Lnk	266,121.07
Total 1101.10 · CALIFORNIA CLASS	5,322,337.29
1200.00 · US Bank - Trust Fund PARS 115	
Market Value FL	1,464.62
Pension Investment	23,534.39
Total 1200.00 · US Bank - Trust Fund PARS 115	24,999.01
Total 1001 · OTHER A/C'S	5,534,890.35
Total Checking/Savings	5,852,281.05
Accounts Receivable	
1003 · *Accounts Receivable	5,230.00
Total Accounts Receivable	5,230.00

AFPD Alpine Fire Protection District

Balance Sheet

11/10/25

As of October 31, 2025

Accrual Basis

	Oct 31, 25
Other Current Assets	
1002 · OTHER CURRENT ASSETS	
1002.14a - Ameriprise	
Money Market	298.73
Market Value of Portfolio FL	-36,873.18
Securities (Fixed Income)	297,571.00
Total 1002.14a - Ameriprise	260,996.55
1002.1 · LAIF 17-37-006	
Committed SRPL Funds	5,417.55
General	861.13
Total 1002.1 · LAIF 17-37-006	6,278.68
1002.13a - Ameriprise	
Securities	-115,025.20
Market Value of Portfolio	-27,492.40
Money Market	365,919.74
Total 1002.13a - Ameriprise	223,402.14
1002.15 · Deferred Outflows of Resources	1,950,559.00
1002.17 · US Bank Bond Interest on Princ.	
Money Market	573.31
Total 1002.17 · US Bank Bond Interest on Princ.	573.31
1002.2 · PASIS-Risk Pool Deposit	590,481.64
1002.6 · Petty Cash	76.00
1002.65 · Change Account	100.00
Total 1002 · OTHER CURRENT ASSETS	3,032,467.32
12000 · Undeposited Funds	71,316.74
Total Other Current Assets	3,103,784.06
Total Current Assets	8,961,295.11
Fixed Assets	
1600 · FIXED ASSETS	
1600.01 · Land	618,704.08
1600.04 · Equipment & Vehicles	2,889,227.92
1600.05 · Structures and Improvements	5,404,755.10
1600.06 · Construction in Process	16,181.24
1600.07 · Accumulated Depreciation	-4,248,575.62
Total 1600 · FIXED ASSETS	4,680,292.72
Total Fixed Assets	4,680,292.72
TOTAL ASSETS	13,641,587.83
LIABILITIES & EQUITY	
Liabilities	
Current Liabilities	
Accounts Payable	
2000 · Accounts Payable	17,305.84
Total Accounts Payable	17,305.84
Credit Cards	
2002 · CREDIT CARDS	
CalCard (Brian Boggeln -2115)	1,416.01
CalCard (Debbie Pinhero -5683)	826.55
Total 2002 · CREDIT CARDS	2,242.56
Total Credit Cards	2,242.56

AFPD Alpine Fire Protection District

Balance Sheet

11/10/25

As of October 31, 2025

Accrual Basis

	Oct 31, 25
Other Current Liabilities	
1800 · Market value of portfolio	5,680.10
2003 · OTHER LIABILITIES	
2003.12 · SRPL Mitigation Funds	166,199.43
Total 2003 · OTHER LIABILITIES	166,199.43
2100 · PAYROLL LIABILITIES	
2100.23 · Reportable Health Coverage {EE}	199.01
Total 2100 · PAYROLL LIABILITIES	199.01
Total Other Current Liabilities	172,078.54
Total Current Liabilities	191,626.94
Long Term Liabilities	
2500 · LONG TERM LIABILITIES	
2500.16 · Net Pension Liability	2,201,696.00
2500.15 · ECAA Loan	430,960.41
2500.01 · Compensated Absences	289,337.16
2500.10 · Deferred Inflows of Resources	2,045,303.00
2500.11 · ACCRUED CLAIMS LIABILITY	1,160,644.89
2500.12 · Capital One Payable UALBond Iss	4,653,000.00
Total 2500 · LONG TERM LIABILITIES	10,780,941.46
Total Long Term Liabilities	10,780,941.46
Total Liabilities	10,972,568.40
Equity	
OPENING BAL EQUITY	2,747,485.71
3000 · Opening Balance Equity	5,142,014.86
3002 · UNRESERVED and UNDESIGNATED	
3002.01 · General Fund Balance	1,553,545.88
3002.02 · Mitigation Fee Fund	2,703.00
Total 3002 · UNRESERVED and UNDESIGNATED	1,556,248.88
3007 · Investment in Fixed Assets	4,291,938.00
1110 · Retained Earnings	-8,919,895.63
Net Income	-2,148,772.39
Total Equity	2,669,019.43
TOTAL LIABILITIES & EQUITY	13,641,587.83

**AFPD Alpine Fire Protection District
Current Month Expenses
October 2025**

Ordinary Income/Expense	Date	Num	Name	Memo	Split	Debit	Credit	Amount
Expense								
Total 5000.01 - Salaries						204,931.86	601.74	204,330.12
Total FLSA						4,253.06	0.00	4,253.06
Total Paramedic Resource Pool						916.56	0.00	916.56
Total Sick Coverage						19,050.96	0.00	19,050.96
Strike Team								
Total Strike Team						10,817.64	0.00	10,817.64
Unclassified-Meetings, etc								
Total Unclassified-Meetings, etc						18,086.88	0.00	18,086.88
Total Vacation - Coverage						24,595.35	0.00	24,595.35
Total 5000.02 - OVERTIME						77,720.45	0.00	77,720.45
Total 5000.03 - DIRECTORS COMPENSATION						900.00	0.00	900.00
Total 5000 - PAYROLL						283,552.31	601.74	282,950.57
5002 - EMPLOYEE BENEFITS								
Total 5002.01 - Educational Incentive						11,352.54	1,236.90	10,115.64
Total 5002.02 - Annual Leave Buyback						718.75	0.00	718.75
Total 5002.03 - Medicare Tax ER						4,213.14	0.00	4,213.14
Total Retirement - Pers						40,690.53	2,395.98	38,294.55
Total 5002.04 - CalPers Retirement						40,690.53	2,395.98	38,294.55
Total Health						36,655.73	440.97	36,214.76
Total Supp Benefits - FRMS						4,254.59	238.99	4,015.60
Total 5002.05 - Group Medical Ins						40,910.32	679.96	40,230.36
Total 5002.06 - Life Insurance						561.44	1.41	560.03
Total 5002.07 - LTD Insurance						683.88	0.11	683.77
Total 5002.08 - Social Security (ER)						55.80	0.00	55.80
Total 5002.09 - Payroll Expenses						3.50	3.50	0.00
Total 5002.10 - Retirement 401 (a)						255.00	0.00	255.00
Total 5002 - EMPLOYEE BENEFITS						99,444.90	4,317.86	95,127.04
5003 - GRANT EXPENSES								
5003.01 - SDRC								
SDRC 0723 Fuels								
	10/01/2025	2025-8	ANTONS SERVICE INC.	Invoice #08	2000 - Accounts Payable	26,998.50		26,998.50
	10/01/2025	22636	ANTONS SERVICE INC.	VOID:	1001.07 - CB&T Checking - 8473	0.00		0.00
Total SDRC 0723 Fuels						26,998.50	0.00	26,998.50
Total 5003.01 - SDRC						26,998.50	0.00	26,998.50
Total 5003 - GRANT EXPENSES						26,998.50	0.00	26,998.50
5007 - UNIFORMS/IPPE								
5007.01 - Uniforms								
	10/06/2025	HLDR	AMAZON	7 Polo Shirts for Directors, FM and Admin Assistant	2000 - Accounts Payable	125.95		125.95
	10/23/2025		Lands End	Poles/Long Sleeve for Admins, FM and Directors	CalCard (Debbie Pinhero -5683)	197.14		197.14
	10/30/2025		Tshirt Mart	Embroidery Poles for Directors, FM and Admin Assist.	CalCard (Brian Boggeln -2115)	131.63		131.63
Total 5007.01 - Uniforms						454.72	0.00	454.72

**AFPD Alpine Fire Protection District
Current Month Expenses
October 2025**

	Date	Num	Name	Memo	Split	Debit	Credit	Amount
5007.02 · Structure PPE								
	10/21/2025	000286	Witz Designs	Unit Identifier Helmet Magnets	CalCard (Debbie Pinhero -5683)	509.53		509.53
	10/29/2025	INV1004606	L.N. CURTIS & SONS	Supralite Turnout Boot "Horton"	2000 · Accounts Payable	646.24		646.24
	10/30/2025		The Public Safety Store	Normex With Goggles ID Bracket with Screws & Phenix Adhesive Base ...	CalCard (Brian Boggeln -2115)	1,284.38		1,284.38
Total 5007.02 · Structure PPE						2,440.15	0.00	2,440.15
5007.03 · Wildland PPE								
	10/29/2025	INV1004606	L.N. CURTIS & SONS	Wildland Jacket Large "Horton"	2000 · Accounts Payable	243.39		243.39
	10/29/2025	INV1004606	L.N. CURTIS & SONS	Sew Emblem and Shipping	2000 · Accounts Payable	19.95		19.95
Total 5007.03 · Wildland PPE						263.34	0.00	263.34
Total 5007 · UNIFORMS/PPE						3,158.21	0.00	3,158.21
5008 · COMMUNICATIONS								
5008.02 · Mobile Communications								
	10/01/2025	6124966656	VERIZON WIRELESS	total: (-2274,-0050,-6522,-7844,-6226,-7650,-9835,-4087,-4175...	2000 · Accounts Payable	566.39		566.39
Total 5008.02 · Mobile Communications						566.39	0.00	566.39
5008.06 · Regional Communications System								
	10/01/2025	26ALPFDPND03	SYS	FY25/26: 24 Fire radios @ 30.50	2000 · Accounts Payable	732.00		732.00
Total 5008.06 · Regional Communications System						732.00	0.00	732.00
5008.08 · Cox Communications								
	10/09/2025	2025/11	COX COMMUNICATIONS	11/09/2025	2000 · Accounts Payable	284.67		284.67
Total 5008.08 · Cox Communications						284.67	0.00	284.67
Total 5008 · COMMUNICATIONS						1,583.06	0.00	1,583.06
5009 · PASIS (Workers Comp)								
Total 5009.02 · Claim Related Expenses						6,945.07	0.00	6,945.07
Total 5009 · PASIS (Workers Comp)						6,945.07	0.00	6,945.07
5012 · MAINTENANCE - EQUIPMENT								
5012.05 · Rescue Tools								
	10/01/2025		Home Depot	Sawzall Blades 12" & 9"	CalCard (Brian Boggeln -2115)	101.77		101.77
Total 5012.05 · Rescue Tools						101.77	0.00	101.77
5012.08 · SCBA - Compressor								
	10/06/2025	IN2353418	MUNICIPAL EMERGENCY SERVICES INC	Compressor Service Call, Air Sample & Calibration	2000 · Accounts Payable	300.00		300.00
Total 5012.08 · SCBA - Compressor						300.00	0.00	300.00
5012.11 · Misc.Equipment								
	10/02/2025	FH3J	AMAZON	Stainless Steel Mini Brushes	2000 · Accounts Payable	8.60		8.60
Total 5012.11 · Misc.Equipment						8.60	0.00	8.60
Total 5012 · MAINTENANCE - EQUIPMENT						410.37	0.00	410.37
5013 · MAINTENANCE - VEHICLES								
5013.10 · E17 - 2015 KME								
	10/22/2025	2625	EVS	Engine 17 800Mhz and VHF Radio Antenna Cable Replacement	2000 · Accounts Payable	1,145.46		1,145.46
	10/23/2025	9048	NORTH COUNTY EVS INC	Unit E17/9625 Diagnose Airt Leak-Repairs, Labor and Parts (Tax included)	2000 · Accounts Payable	2,282.83		2,282.83
Total 5013.10 · E17 - 2015 KME						3,428.29		3,428.29

**AFPD Alpine Fire Protection District
Current Month Expenses
October 2025**

	Date	Num	Name	Memo	Split	Debit	Credit	Amount
Total 5013.10 - E17 - 2015 KME						3,428.29	0.00	3,428.29
5013.30 - 2023 Chevrolet Silverado								
	10/17/2025	1494	PINE VALLEY AUTO REPAIR INC.		CalCard (Joseph Lavigne -2983)	163.35		163.35
Total 5013.30 - 2023 Chevrolet Silverado						163.35	0.00	163.35
5013.70 - 2021 Chevrolet Silverado								
	10/06/2025	6631	CP RICHARDS SIGNS	Remove Decals	CalCard (Brian Boggeln -2115)	295.00		295.00
Total 5013.70 - 2021 Chevrolet Silverado						295.00	0.00	295.00
Total 5013 - MAINTENANCE - VEHICLES						3,886.64	0.00	3,886.64
5014 - MAINTENANCE - FACILITIES								
5014.01 - Station 17								
	10/18/2025	53182/1	ACE HARDWARE INC.	MISC Fasteners	2000 - Accounts Payable	7.20		7.20
	10/31/2025	2353945	PURTEC INDUSTRIAL WATER	10/01-10/31/2025	2000 - Accounts Payable	39.32		39.32
Total 5014.01 - Station 17						46.52	0.00	46.52
5014.04 - ST-17 Life Safety Systems								
	10/01/2025	53413368	JOHNSON CONTROLS FIRE PROTECTION LP	Service Call 09/30/2025?	2000 - Accounts Payable	963.00		963.00
	10/07/2025	22646	JOHNSON CONTROLS FIRE PROTECTION LP	VOID: 480-1246985	1001.07 - CB&T Checking - 8473	0.00		0.00
Total 5014.04 - ST-17 Life Safety Systems						963.00	0.00	963.00
5014.07 - Grounds Maintenance								
	10/03/2025	0298854	CARTWRIGHT TERMITE & PEST CNTRL., INC	2025/10 (1st Service)	2000 - Accounts Payable	165.00		165.00
	10/2/2025	0298853	CARTWRIGHT TERMITE & PEST CNTRL., INC	2025/10 (2nd Service)	2000 - Accounts Payable	165.00		165.00
Total 5014.07 - Grounds Maintenance						330.00	0.00	330.00
Total 5014 - MAINTENANCE - FACILITIES						1,339.52	0.00	1,339.52
5016 - AGENCY MEMBERSHIPS								
	10/20/2025	300018673	CSMFO, CAL SOCIETY OF MUNI. FIN OFFICERS	Admin Director Membership Annual 2025-2026	CalCard (Debbie Pinhero -5683)	150.00		150.00
	10/29/2025	10292025	SDCF-CA-EMS	FY 25/26 Jason Smith	2000 - Accounts Payable	50.00		50.00
Total 5016 - AGENCY MEMBERSHIPS						200.00	0.00	200.00
5018 - OFFICE EXPENSE								
5018.01 - Expendable Supplies								
	10/14/2025	HKVL	AMAZON	Blue & Black Ink Pens, Wall Clock FM Office, Post-It Sign Here & Paper Clips	2000 - Accounts Payable	82.16		82.16
	10/16/2025	4639	STAPLES	Display Easel (2)	CalCard (Brian Boggeln -2115)	64.63		64.63
Total 5018.01 - Expendable Supplies						146.79	0.00	146.79
5018.02 - Postage								
	10/10/2025		FP POSTAGE RESET		1001.07 - CB&T Checking - 8473	20.00		20.00
	10/28/2025	EFT	FP POSTAGE RESET		1001.07 - CB&T Checking - 8473	50.00		50.00
Total 5018.02 - Postage						70.00	0.00	70.00
5018.03 - IT Equipment								
	10/06/2025	INV12563-CBE	COPYLINK	10/01-10/31/2025	2000 - Accounts Payable	159.14		159.14
	10/06/2025	INV12563-CBE	COPYLINK	Overage	2000 - Accounts Payable	0.00		0.00
	10/07/2025	AFPD-100725	GREEN SHREDDING	Pickup (\$50)	2000 - Accounts Payable	50.00		50.00

**AFPD Alpine Fire Protection District
Current Month Expenses
October 2025**

	Date	Num	Name	Memo	Split	Debit	Credit	Amount
	10/16/2025	4992	HP	Refund for canceled order	CalCard (Brian Boggeln -2115)		1,141.07	-1,141.07
	10/17/2025	4851	HP		CalCard (Brian Boggeln -2115)	1,141.07		1,141.07
Total 5018.03 - IT Equipment						1,350.21	1,141.07	209.14
Total 5018 - OFFICE EXPENSE						1,567.00	1,141.07	425.93
5019 - PROFESSIONAL FEES / SERVICES								
5019.01 - Legal Counsel								
	10/31/2025	12020	FITCH LAW FIRM	District business: 5.4 hrs, Postage, 2025 10	2000 - Accounts Payable	1,080.00		1,080.00
Total 5019.01 - Legal Counsel						1,080.00	0.00	1,080.00
5019.06 - Wellness - Fitness Program								
	10/13/2025	INV106787	FOCUS PSYCHOLOGICAL SERVICE, INC.	Counseling Service September 2025 - 3 @ \$100	2000 - Accounts Payable	300.00		300.00
Total 5019.06 - Wellness - Fitness Program						300.00	0.00	300.00
5019.09 - Benefit Fee Administration								
	10/31/2025	010-63949	WILLDAN FINANCIAL SERVICES	Fire Suppression District Admin Annual Invoice FY 25/26(Active Parcels 5488)	2000 - Accounts Payable	4,816.23		4,816.23
Total 5019.09 - Benefit Fee Administration						4,816.23	0.00	4,816.23
Total 5019 - PROFESSIONAL FEES / SERVICES						6,196.23	0.00	6,196.23
5025 - PROFESSIONAL DEVELOPMENT								
5025.01 - Administration								
	10/20/2025	8228	CSMFO_CAL SOCIETY OF MUNI. FIN OFFICERS	2026 CSFMO Conference Feb. 24-27/2026 & Pre-Conf. Session A	CalCard (Brian Boggeln -2115)	900.00		900.00
Total 5025.01 - Administration						900.00	0.00	900.00
5025.02 - Chief Officers								
	10/02/2025	8610	SOUTHWEST AIRLINES	FRMS Board Meeting Deprts 11/13/2025	CalCard (Brian Boggeln -2115)	306.60		306.60
	10/09/2025	1461	PayPal	LCW Conference	CalCard (Brian Boggeln -2115)	670.00		670.00
	10/18/2025	7749	SOUTHWEST AIRLINES	FRMS Board Meeting (Date change) Deprts 11/20/2025	CalCard (Brian Boggeln -2115)	90.99		90.99
Total 5025.02 - Chief Officers						1,067.59	0.00	1,067.59
Total 5025 - PROFESSIONAL DEVELOPMENT						1,967.59	0.00	1,967.59
5028 - UTILITIES								
5028.01 - SDG&E								
	10/07/2025	009032590621 2025/10	SDG&E	284 KWH 09/5-010/03/2025 (-3.4% increase over prior month, -131.7% decrease over prior year)	2000 - Accounts Payable	1,141.94		1,141.94
Total 5028.01 - SDG&E						1,141.94		1,141.94
5028.02 - Telephone								
	10/07/2025	090325928213 2025/10	SDG&E	63 Therms 09/05-10/03/2025 (3.4% increase over prior month, 30.8% decrease over prior year)	2000 - Accounts Payable	113.24		113.24
Total 5028.02 - Telephone						113.24	0.00	113.24
Total 5028.01 - SDG&E						1,255.18		1,255.18
5028.03 - Water								
	10/01/2025	232165	ESI ESTECH SYSTEMS	2025/10 Monthly	2000 - Accounts Payable	348.90		348.90
Total 5028.02 - Telephone						348.90	0.00	348.90
Total 5028.03 - Water								
	10/24/2025	11561843 2025/1024	PADRE DAM	Commercial 22 units (+8 units usage from prior month) 09/14-10/19/2025	2000 - Accounts Payable	289.99		289.99

**AFPD Alpine Fire Protection District
Current Month Expenses
October 2025**

	Date	Num	Name	Memo	Split	Debit	Credit	Amount
	10/24/2025	11561843 20251024	PADRE DAM	System Charge	2000 · Accounts Payable	40.97		40.97
	10/24/2025	11561843 20251024	PADRE DAM	Fire Sprinklers	2000 · Accounts Payable	66.94		66.94
	10/24/2025	11561843 20251024	PADRE DAM	Water Changes, Pumping & Energy, less Eastern Tax	2000 · Accounts Payable	4.55		4.55
Total 5028.03 · Water						402.45	0.00	402.45
5028.04 · Trash								
	10/01/2025	2025/10	WASTE MANAGEMENT	1 - 3yd (reg charge \$59.61) 2025/10	2000 · Accounts Payable	76.84		76.84
	10/01/2025	2025/10	WASTE MANAGEMENT	1.5yd dumpster recycle (reg charge 41.54) 2025/10	2000 · Accounts Payable	49.85		49.85
	10/01/2025	2025/10	WASTE MANAGEMENT	Organics 64 gal cart service 2025/10	2000 · Accounts Payable	111.41		111.41
Total 5028.04 · Trash						238.10	0.00	238.10
Total 5028 · UTILITIES						2,244.63	0.00	2,244.63
5030 · SPECIAL DISTRICT EXPENSE								
5030.01 · District Operations								
	10/02/2025			Service Charge	1001.07 · CB&T Checking - 8473	15.00		15.00
	10/28/2025	22667	PASKLE, BILL	Mileage: 38 miles HCFA Commission Meeting 10/23/2025 *\$.70/per mile	1001.07 · CB&T Checking - 8473	26.60		26.60
Total 5030.01 · District Operations						41.60	0.00	41.60
5030.02 · Incident Operations								
	10/09/2025	7769	Riverhouse Deschutes	Refund for 3% surcharge that should not of been applied	CalCard (Patrick Dotson -8770)		4.95	-4.95
	10/10/2025	1856	Riverhouse Deschutes	Refund	CalCard (Patrick Dotson -8770)		0.14	-0.14
Total 5030.02 · Incident Operations						0.00	5.09	-5.09
5030.03 · Web Site								
	10/01/2025	5CF0ACE6-0061	STREAMLINE	2025 10	2000 · Accounts Payable	130.00		130.00
Total 5030.03 · Web Site						130.00	0.00	130.00
5030.05 · Reimbursable expenses								
Total 5030.05 · Reimbursable expenses						1,978.00	1,978.00	0.00
5030.06 · Software/Licenses								
	10/02/2025	0073	AMAZON	Amazon Web Service	CalCard (Brian Boggeln -2115)	0.50		0.50
	10/04/2025		ADOBE INC.	Admin Assist 10/2025	CalCard (Debbie Pinhero -5683)	9.99		9.99
	10/04/2025		ADOBE INC.	Admin Director 10/2025	CalCard (Debbie Pinhero -5683)	9.99		9.99
	10/04/2025	7035	ADOBE INC.	Fire Chief 10/2025	CalCard (Brian Boggeln -2115)	9.99		9.99
	10/07/2025		ADOBE INC.	Admin Assist 10/2025 - Partial Refund	CalCard (Debbie Pinhero -5683)		9.06	-9.06
	10/07/2025		ADOBE INC.	Admin Assist 10/2025 - New Pricing	CalCard (Debbie Pinhero -5683)	14.99		14.99
	10/13/2025	9028	ZOOM VIDEO COMMUNICATIONS, INC	Zoom Renewal	CalCard (Brian Boggeln -2115)	159.90		159.90
	10/20/2025	ESO-180678	ESO SOLUTIONS, INC	ESO Fire Discount Bundle	2000 · Accounts Payable	1,820.50		1,820.50
	10/23/2025		Dropbox	Dropbox Storage Yearly for Admin Assist 10/23/25-10/23/26	CalCard (Debbie Pinhero -5683)	119.88		119.88
Total 5030.06 · Software/Licenses						2,145.74	9.06	2,136.68
Total 5030 · SPECIAL DISTRICT EXPENSE						4,295.34	1,992.15	2,303.19
5032 · Community Risk Reduction								
5032.01 · Public Education								

**AFPD Alpine Fire Protection District
Current Month Expenses
October 2025**

	Date	Num	Name	Memo	Split	Debit	Credit	Amount
	10/04/2025	53058/1	ACE HARDWARE INC.	Twine Nylon Open House 2025	2000 · Accounts Payable	18.31		18.31
	10/07/2025	22642	BAILEY, MICAL	Open House 2025 - Walmart Reimbursement	1001.07 · CB&T Checking - 8473	113.24		113.24
	10/07/2025	22642	BAILEY, MICAL	Open House 2025 - Costco Reimbursement	1001.07 · CB&T Checking - 8473	191.94		191.94
Total 5032.01 · Public Education						323.49	0.00	323.49
5032.02 · Supplies								
	10/03/2025	2473	Balloonit	Helium - Open House 2025	CalCard (Jason McBroom -0108)	265.21		265.21
	10/04/2025	3262	ALBERTSONS	Open House 2025 - Food	CalCard (Jason McBroom -0108)	220.71		220.71
Total 5032.02 · Supplies						485.92	0.00	485.92
Total 5032 · Community Risk Reduction						809.41	0.00	809.41
5035 · MINOR EQUIPMENT								
Facilities								
	10/17/2025	1816	Davis Instruments	Davis weather station	CalCard (Brian Boggeln -2115)	748.87		748.87
	10/19/2025	621	TRI EXPRESS PLUMBING	Remove and install new well hung toilet	2000 · Accounts Payable	1,371.00		1,371.00
Total Facilities						2,119.87	0.00	2,119.87
Office								
	10/20/2025	6619	HP	Desktop for Admin Assistant Front Office	CalCard (Brian Boggeln -2115)	1,184.17		1,184.17
Total Office						1,184.17	0.00	1,184.17
Operations								
	10/13/2025	2615	EVS	Engine 17 Replace VHF/Installation 4701	2000 · Accounts Payable	1,426.28		1,426.28
	10/22/2025	IN2363862	MUNICIPAL EMERGENCY SERVICES INC	Hoses See PO	2000 · Accounts Payable	10,096.17		10,096.17
Total Operations						11,522.45	0.00	11,522.45
Total 5035 · MINOR EQUIPMENT						14,826.49	0.00	14,826.49
5037 · CAPITALIZED EXPENSES								
Facilities								
	10/28/2025	7345350	BEST BUY	WOLF 60" Gas Range 6 Burner, Double Griddle, Includes Delivery & Haul Away (5-Year Warranty Mode..	2000 · Accounts Payable	18,781.83		18,781.83
	10/31/2025	848022	Controlled Entry Specialists, Inc.	Installation of New Access System	2000 · Accounts Payable	5,598.00		5,598.00
Total Facilities						24,379.83	0.00	24,379.83
Operations								
	10/22/2025	97034526	KARL STORZ ENDOSCOPY-AMERICA, INC.	C-MAC® S VIDEO LARYNGOSCOPE, MAC #3 (3 pack)	2000 · Accounts Payable	571.24		571.24
	10/22/2025	97034526	KARL STORZ ENDOSCOPY-AMERICA, INC.	C-MAC® S VIDEO LARYNGOSCOPE,D-BLADE (1 pack)	2000 · Accounts Payable	190.42		190.42
Total Operations						761.66		761.66
Total 5037 · CAPITALIZED EXPENSES						24,379.83	761.66	23,618.17
8000.00 · DEBT SERVICE FUND								
8000.01 · POB								
POB - Interest								

AFPD Alpine Fire Protection District

Profit & Loss

October 2025

	<u>Oct 25</u>
Ordinary Income/Expense	
Income	
4000 PROPERTY TAXES	
4000.01 · Property Tax	34,668.19
4000.02 · General Fund Interest	1,053.67
4000.03 · Benefit Fee	-346.64
Total 4000 PROPERTY TAXES	<u>35,375.22</u>
4002 · USE OF MONEY AND PROPERTY	
4002.01 · INTEREST INCOME	
CA CLASS	19,442.43
California Bank & Trust	10.20
Investments	659.06
LAIF	67.85
Total 4002.01 · INTEREST INCOME	<u>20,179.54</u>
4002.02 · Property Lease	
ALS Agreement (Restricted)	5,091.28
Total 4002.02 · Property Lease	<u>5,091.28</u>
Total 4002 · USE OF MONEY AND PROPERTY	<u>25,270.82</u>
4005 · MISCELLANEOUS REVENUE	
4005.01 · Other	1,068.48
Total 4005 · MISCELLANEOUS REVENUE	<u>1,068.48</u>
4006 · GRANT INCOME	
4006.01 · SDRC	
SDRC 0723 Fuels	26,999.00
Total 4006.01 · SDRC	<u>26,999.00</u>
Total 4006 · GRANT INCOME	<u>26,999.00</u>
4008 · FEES AND SERVICES	
4008.01 · Mitigation	
Fees	49,071.56
Interest	38.15
Total 4008.01 · Mitigation	<u>49,109.71</u>
4008.02 · Fees for Services	2,087.08
Total 4008 · FEES AND SERVICES	<u>51,196.79</u>
Total Income	<u>139,910.31</u>
Gross Profit	139,910.31
Expense	
5000 · PAYROLL	
5000.01 · Salaries	204,330.12
5000.02 · OVERTIME	
FLSA	4,253.06
Paramedic Resource Pool	916.56
Sick Coverage	19,050.96
Strike Team	10,817.64
Unclassified-Meetings, etc	18,086.88
Vacation - Coverage	24,595.35
Total 5000.02 · OVERTIME	<u>77,720.45</u>
5000.03 · DIRECTORS COMPENSATION	900.00
Total 5000 · PAYROLL	<u>282,950.57</u>
5002 · EMPLOYEE BENEFITS	

AFPD Alpine Fire Protection District

11/10/25

Profit & Loss

Accrual Basis

October 2025

	Oct 25
5002.01 · Educational Incentive	10,115.64
5002.02 · Annual Leave Buyback	718.75
5002.03 · Medicare Tax ER	4,213.14
5002.04 · CalPers Retirement Retirement - Pers	38,294.55
Total 5002.04 · CalPers Retirement	38,294.55
5002.05 · Group Medical Ins Health	36,214.76
Supp Benefits - FRMS	4,015.60
Total 5002.05 · Group Medical Ins	40,230.36
5002.06 · Life Insurance	560.03
5002.07 · LTD Insurance	683.77
5002.08 · Social Security (ER)	55.80
5002.09 · Payroll Expenses	0.00
5002.10 · Retirement 401 (a)	255.00
Total 5002 · EMPLOYEE BENEFITS	95,127.04
5003 · GRANT EXPENSES	
5003.01 · SDRC SDRC 0723 Fuels	26,998.50
Total 5003.01 · SDRC	26,998.50
Total 5003 · GRANT EXPENSES	26,998.50
5007 · UNIFORMS/PPE	
5007.01 · Uniforms	454.72
5007.02 · Structure PPE	2,440.15
5007.03 · Wildland PPE	263.34
Total 5007 · UNIFORMS/PPE	3,158.21
5008 · COMMUNICATIONS	
5008.02 · Mobile Communications	566.39
5008.06 · Regional Communications System	732.00
5008.08 · Cox Communcations	284.67
Total 5008 · COMMUNICATIONS	1,583.06
5009 · PASIS (Workers Comp)	
5009.01 · Administrative Costs	190.04
5009.02 · Claim Related Expenses	6,755.03
Total 5009 · PASIS (Workers Comp)	6,945.07
5012 · MAINTENANCE - EQUIPMENT	
5012.05 · Rescue Tools	101.77
5012.08 · SCBA - Compressor	300.00
5012.11 · Misc.Equipment	8.60
Total 5012 · MAINTENANCE - EQUIPMENT	410.37
5013 · MAINTENANCE - VEHICLES	
5013.10 · E17 - 2015 KME	3,428.29
5013.30 · 2023 Chevrolet Silverado	163.35
5013.70 · 2021 Chevrolet Silverado	295.00
Total 5013 · MAINTENANCE - VEHICLES	3,886.64
5014 · MAINTENANCE - FACILITIES	
5014.01 · Station 17	46.52
5014.04 · ST-17 Life Safety Systems	963.00
5014.07 · Grounds Maintenance	330.00
Total 5014 · MAINTENANCE - FACILITIES	1,339.52

AFPD Alpine Fire Protection District

11/10/25

Profit & Loss

Accrual Basis

October 2025

	Oct 25
5016 · AGENCY MEMBERSHIPS	200.00
5018 · OFFICE EXPENSE	
5018.01 · Expendable Supplies	146.79
5018.02 · Postage	70.00
5018.03 · IT Equipment	209.14
Total 5018 · OFFICE EXPENSE	425.93
5019 · PROFESSIONAL FEES / SERVICES	
5019.01 · Legal Counsel	1,080.00
5019.06 · Wellness - Fitness Program	300.00
5019.09 · Benefit Fee Administration	4,816.23
Total 5019 · PROFESSIONAL FEES / SERVICES	6,196.23
5025 · PROFESSIONAL DEVELOPMENT	
5025.01 · Administration	900.00
5025.02 · Chief Officers	1,067.59
Total 5025 · PROFESSIONAL DEVELOPMENT	1,967.59
5028 · UTILITIES	
5028.01 · SDG&E	1,255.18
5028.02 · Telephone	348.90
5028.03 · Water	402.45
5028.04 · Trash	238.10
Total 5028 · UTILITIES	2,244.63
5030 · SPECIAL DISTRICT EXPENSE	
5030.01 · District Operations	41.60
5030.02 · Incident Operations	-5.09
5030.03 · Web Site	130.00
5030.05 · Reimbursable expenses	0.00
5030.06 · Software/Licenses	2,136.68
Total 5030 · SPECIAL DISTRICT EXPENSE	2,303.19
5032 · Community Risk Reduction	
5032.01 · Public Education	323.49
5032.02 · Supplies	485.92
Total 5032 · Community Risk Reduction	809.41
5035 · MINOR EQUIPMENT	
Facilities	2,119.87
Office	1,184.17
Operations	11,522.45
Total 5035 · MINOR EQUIPMENT	14,826.49
5037 · CAPITALIZED EXPENSES	
Facilities	24,379.83
Operations	-761.66
Total 5037 · CAPITALIZED EXPENSES	23,618.17
8000.00 · DEBT SERVICE FUND	
8000.01 · POB	
POB - Interest	-1.93
Total 8000.01 · POB	-1.93
Total 8000.00 · DEBT SERVICE FUND	-1.93
Total Expense	474,988.69
Net Ordinary Income	-335,078.38
Net Income	-335,078.38

AFPD Alpine Fire Protection District
Profit & Loss Prev Year Comparison
July through October 2025

	Jul - Oct 25	Jul - Oct 24	\$ Change	% Change
Ordinary Income/Expense				
Income				
4000 PROPERTY TAXES				
4000.01 · Property Tax				
Property Tax 1%	164,352.82	173,236.90	-8,884.08	-5.1%
Admin Fees	-999.56	-1,065.47	65.91	6.2%
Refunds	-11,231.42	-5,774.74	-5,456.68	-94.5%
Total 4000.01 · Property Tax	152,121.84	166,396.69	-14,274.85	-8.6%
4000.02 · General Fund Interest	5,912.79	9,804.16	-3,891.37	-39.7%
4000.03 · Benefit Fee	-346.64	1,025.80	-1,372.44	-133.8%
Total 4000 PROPERTY TAXES	157,687.99	177,226.65	-19,538.66	-11.0%
4002 · USE OF MONEY AND PROPERTY				
4002.01 · INTEREST INCOME				
CA CLASS				
California Bank & Trust	81,105.43	72,807.64	8,297.79	11.4%
Investments	21.77	62.85	-41.08	-65.4%
LAIF	7,977.40	32,610.63	-24,633.23	-75.5%
PASIS	67.85	70.40	-2.55	-3.6%
SRPL	6,361.72	8,257.46	-1,895.74	-23.0%
Total 4002.01 · INTEREST INCOME	96,501.96	118,272.01	-21,770.05	-18.4%
4002.02 · Property Lease				
ALS Agreement (Restricted)	21,508.64	62,835.17	-41,326.53	-65.8%
Total 4002.02 · Property Lease	21,508.64	62,835.17	-41,326.53	-65.8%
Total 4002 · USE OF MONEY AND PROPERTY	118,010.60	181,107.18	-63,096.58	-34.8%
4005 · MISCELLANEOUS REVENUE				
4005.01 · Other	31,262.79	25,057.73	6,205.06	24.8%
Total 4005 · MISCELLANEOUS REVENUE	31,262.79	25,057.73	6,205.06	24.8%
4006 · GRANT INCOME				
4006.01 · SDRC				
SDRC 0723 Fuels	40,490.25	0.00	40,490.25	100.0%
Total 4006.01 · SDRC	40,490.25	0.00	40,490.25	100.0%
4006.03 · CITY OF SD - OES				
UASI 2022	0.00	2,229.20	-2,229.20	-100.0%
Total 4006.03 · CITY OF SD - OES	0.00	2,229.20	-2,229.20	-100.0%
4006.05 · Alpine FireProtectionFoundation	0.00	777.07	-777.07	-100.0%
Total 4006 · GRANT INCOME	40,490.25	3,006.27	37,483.98	1,246.9%
4007 · INTERGOVERNMENTAL REVENUE				
4007.01 · Incident Reimburse - Personnel	49,864.30	111,888.56	-62,024.26	-55.4%
4007.02 · Incident Reimburse - Vehicle	8,717.84	49,017.58	-40,299.74	-82.2%
4007.03 · Incident Reimburse - Other	19,934.82	25,575.67	-5,640.85	-22.1%
4007.04 · Paramedic Resource Pool	1,403.28	3,820.32	-2,417.04	-63.3%
Total 4007 · INTERGOVERNMENTAL REVE...	79,920.24	190,302.13	-110,381.89	-58.0%
4008 · FEES AND SERVICES				
4008.01 · Mitigation				
Fees	49,235.31	20,905.26	28,330.05	135.5%
Interest	194.93	391.95	-197.02	-50.3%
Total 4008.01 · Mitigation	49,430.24	21,297.21	28,133.03	132.1%
4008.02 · Fees for Services	10,083.11	20,063.17	-9,980.06	-49.7%
Total 4008 · FEES AND SERVICES	59,513.35	41,360.38	18,152.97	43.9%
Total Income	486,885.22	618,060.34	-131,175.12	-21.2%
Gross Profit	486,885.22	618,060.34	-131,175.12	-21.2%
Expense				
5000 · PAYROLL				
5000.01 · Salaries	799,969.23	705,572.92	94,396.31	13.4%
5000.02 · OVERTIME				
Critical Weather	0.00	4,766.76	-4,766.76	-100.0%
FLSA	16,543.82	14,560.65	1,983.17	13.6%
Paramedic Resource Pool	9,923.32	3,820.32	6,103.00	159.8%

AFPD Alpine Fire Protection District
Profit & Loss Prev Year Comparison
July through October 2025

	Jul - Oct 25	Jul - Oct 24	\$ Change	% Change
Sick Coverage	84,890.76	14,235.94	70,654.82	496.3%
Strike Team	137,778.10	216,993.80	-79,215.70	-36.5%
Training	0.00	14,233.75	-14,233.75	-100.0%
Unclassified-Meetings, etc	60,539.93	101.26	60,438.67	59,686.6%
Vacation - Coverage	85,323.74	93,461.04	-8,137.30	-8.7%
Worker's Comp Coverage	0.00	13,396.63	-13,396.63	-100.0%
Total 5000.02 · OVERTIME	394,999.67	375,570.15	19,429.52	5.2%
5000.03 · DIRECTORS COMPENSATION	2,300.00	1,500.00	800.00	53.3%
5000 · PAYROLL - Other	0.00	0.00	0.00	0.0%
Total 5000 · PAYROLL	1,197,268.90	1,082,643.07	114,625.83	10.6%
5002 · EMPLOYEE BENEFITS				
5002.01 · Educational Incentive	55,708.68	43,780.54	11,928.14	27.3%
5002.02 · Annual Leave Buyback	1,579.58	19,593.60	-18,014.02	-91.9%
5002.03 · Medicare Tax ER	17,928.20	16,216.45	1,711.75	10.6%
5002.04 · CalPers Retirement				
Retirement - Pers	151,317.06	131,846.14	19,470.92	14.8%
Retirement UAL Payments	194,285.00	209,906.00	-15,621.00	-7.4%
Total 5002.04 · CalPers Retirement	345,602.06	341,752.14	3,849.92	1.1%
5002.05 · Group Medical Ins				
Health	141,299.10	122,123.88	19,175.22	15.7%
Supp Benefits - FRMS	14,989.06	14,322.76	666.30	4.7%
Total 5002.05 · Group Medical Ins	156,288.16	136,446.64	19,841.52	14.5%
5002.06 · Life Insurance	2,040.62	2,184.53	-143.91	-6.6%
5002.07 · LTD Insurance	2,513.14	2,518.36	-5.22	-0.2%
5002.08 · Social Security (ER)	142.60	93.00	49.60	53.3%
5002.09 · Payroll Expenses	0.00	0.00	0.00	0.0%
5002.10 · Retirement 401 (a)	11,020.00	9,215.00	1,805.00	19.6%
5002.11 · Uniform Allowance (Admin)	250.00	250.00	0.00	0.0%
Total 5002 · EMPLOYEE BENEFITS	593,073.04	572,050.26	21,022.78	3.7%
5003 · GRANT EXPENSES				
5003.01 · SDRC				
SDRC 0723 Fuels	40,489.75	0.00	40,489.75	100.0%
Total 5003.01 · SDRC	40,489.75	0.00	40,489.75	100.0%
5003.04 · CountySD				
SHGP 2023	0.00	10,351.00	-10,351.00	-100.0%
Total 5003.04 · CountySD	0.00	10,351.00	-10,351.00	-100.0%
5003.05 · Alpine FireProtectionFoundation	25.58	777.07	-751.49	-96.7%
5003.07 · SD Regional Fire Foundation				
Fire Shelters-Turnouts 2024	0.00	1,537.87	-1,537.87	-100.0%
Total 5003.07 · SD Regional Fire Foundati...	0.00	1,537.87	-1,537.87	-100.0%
Total 5003 · GRANT EXPENSES	40,515.33	12,665.94	27,849.39	219.9%
5007 · UNIFORMS/PPE				
5007.01 · Uniforms	5,526.17	7,292.44	-1,766.27	-24.2%
5007.02 · Structure PPE	3,346.15	276.00	3,070.15	1,112.4%
5007.03 · Wildland PPE	379.71	0.00	379.71	100.0%
Total 5007 · UNIFORMS/PPE	9,252.03	7,568.44	1,683.59	22.2%
5008 · COMMUNICATIONS				
5008.01 · Heartland Comm Facility	41,871.09	65,662.41	-23,791.32	-36.2%
5008.02 · Mobile Communications	3,509.92	2,061.36	1,448.56	70.3%
5008.06 · Regional Communications Syst...	2,196.00	2,925.00	-729.00	-24.9%
5008.08 · Cox Communcations	1,138.68	1,027.68	111.00	10.8%
Total 5008 · COMMUNICATIONS	48,715.69	71,676.45	-22,960.76	-32.0%
5009 · PASIS (Workers Comp)				
5009.01 · Administrative Costs	152,352.04	118,467.00	33,885.04	28.6%
5009.02 · Claim Related Expenses	30,640.29	38,104.37	-7,464.08	-19.6%
Total 5009 · PASIS (Workers Comp)	182,992.33	156,571.37	26,420.96	16.9%
5010 · HOUSEHOLD	1,076.17	2,008.31	-932.14	-46.4%
5011 · FAIRA	73,623.00	65,348.00	8,275.00	12.7%
5012 · MAINTENANCE - EQUIPMENT				

AFPD Alpine Fire Protection District
Profit & Loss Prev Year Comparison
July through October 2025

	Jul - Oct 25	Jul - Oct 24	\$ Change	% Change
5012.01 · SCBA's	1,992.06	144.47	1,847.59	1,278.9%
5012.02 · Air Compressor - Station	0.00	292.80	-292.80	-100.0%
5012.03 · 800 mhz Radios	2,659.03	816.80	1,842.23	225.5%
5012.04 · VHF Radios	61.28	1,454.97	-1,393.69	-95.8%
5012.05 · Rescue Tools	101.77	0.00	101.77	100.0%
5012.07 · Station Generator	429.71	454.08	-24.37	-5.4%
5012.08 · SCBA - Compressor	2,000.88	2,351.63	-350.75	-14.9%
5012.11 · Misc.Equipment	894.47	0.00	894.47	100.0%
5012.12 · Fuel	11,426.84	11,884.93	-458.09	-3.9%
5012.14 · Fire Hose & Appliances	522.05	98.79	423.26	428.4%
5012.15 · Gas Detectors	182.55	0.00	182.55	100.0%
Total 5012 · MAINTENANCE - EQUIPMENT	20,270.64	17,498.47	2,772.17	15.8%
5013 · MAINTENANCE - VEHICLES				
5013.10 · E17 - 2015 KME	27,738.04	7,076.31	20,661.73	292.0%
5013.20 · E217 - 2005 KME	13,639.11	11,151.94	2,487.17	22.3%
5013.30 · 2023 Chevrolet Silverado	423.98	0.00	423.98	100.0%
5013.40 · 2019 F-250	210.07	4,311.15	-4,101.08	-95.1%
5013.50 · BR17 Hi-Tech (2019)	0.00	8,625.75	-8,625.75	-100.0%
5013.70 · 2021 Chevrolet Silverado	302.53	4,004.13	-3,701.60	-92.4%
5013.80 · Vermeer 1500C Chipper	0.00	1,115.52	-1,115.52	-100.0%
Total 5013 · MAINTENANCE - VEHICLES	42,313.73	36,284.80	6,028.93	16.6%
5014 · MAINTENANCE - FACILITIES				
5014.01 · Station 17	2,926.91	1,680.92	1,245.99	74.1%
5014.02 · HVAC Maintenance	1,233.50	1,300.50	-67.00	-5.2%
5014.03 · Apparatus Bay Doors & Gates	0.00	750.00	-750.00	-100.0%
5014.04 · ST-17 Life Safety Systems	1,493.36	280.00	1,213.36	433.3%
5014.06 · Gym Equipment	284.91	225.00	59.91	26.6%
5014.07 · Grounds Maintenance	1,430.06	1,346.09	83.97	6.2%
Total 5014 · MAINTENANCE - FACILITIES	7,368.74	5,582.51	1,786.23	32.0%
5015 · EMERGENCY MEDICAL SERVICES				
5015.01 · EMS Supplies	1,393.78	1,982.70	-588.92	-29.7%
5015.02 · EMS Maintenance Contracts	632.00	13,248.00	-12,616.00	-95.2%
5015.03 · Medication Disposal	212.00	182.00	30.00	16.5%
Total 5015 · EMERGENCY MEDICAL SERVI...	2,237.78	15,412.70	-13,174.92	-85.5%
5016 · AGENCY MEMBERSHIPS	1,264.00	2,312.03	-1,048.03	-45.3%
5018 · OFFICE EXPENSE				
5018.01 · Expendable Supplies	657.92	570.12	87.80	15.4%
5018.02 · Postage	170.00	150.00	20.00	13.3%
5018.03 · IT Equipment	5,425.98	1,560.39	3,865.59	247.7%
5018.04 · Publishing	168.00	168.00	0.00	0.0%
Total 5018 · OFFICE EXPENSE	6,421.90	2,448.51	3,973.39	162.3%
5019 · PROFESSIONAL FEES / SERVICES				
5019.01 · Legal Counsel	19,936.28	10,888.24	9,048.04	83.1%
5019.02 · Auditor	18,275.20	15,100.00	3,175.20	21.0%
5019.04 · IT Services	0.00	194.00	-194.00	-100.0%
5019.06 · Wellness - Fitness Program	2,144.00	450.00	1,694.00	376.4%
5019.08 · SD LAFCO	2,209.29	3,751.07	-1,541.78	-41.1%
5019.09 · Benefit Fee Administration	4,816.23	4,318.65	497.58	11.5%
Total 5019 · PROFESSIONAL FEES / SERVI...	47,381.00	34,701.96	12,679.04	36.5%
5023 · TRAINING				
5023.01 · Training Incidentals	0.00	10.75	-10.75	-100.0%
5023.02 · EMS (Medical Training)	989.00	1,460.00	-471.00	-32.3%
5023.03 · Heartland Training Facility	6,662.00	10,816.00	-4,154.00	-38.4%
5023.04 · Education Reimbursement	731.22	1,041.50	-310.28	-29.8%
Total 5023 · TRAINING	8,382.22	13,328.25	-4,946.03	-37.1%
5025 · PROFESSIONAL DEVELOPMENT				
5025.01 · Administration	900.00	1,629.00	-729.00	-44.8%
5025.02 · Chief Officers	715.00	367.14	347.86	94.8%
5025.03 · Board of Directors	0.00	599.00	-599.00	-100.0%
5025.04 · In House Training	4,545.00	3,470.00	1,075.00	31.0%
5025.05 · Community Risk Reduction	0.00	294.39	-294.39	-100.0%
5025.06 · Operations	0.00	3,050.76	-3,050.76	-100.0%
Total 5025 · PROFESSIONAL DEVELOPMENT	6,160.00	9,410.29	-3,250.29	-34.5%
5028 · UTILITIES				
5028.01 · SDG&E	4,599.44	6,230.49	-1,631.05	-26.2%

AFPD Alpine Fire Protection District
Profit & Loss Prev Year Comparison
July through October 2025

	Jul - Oct 25	Jul - Oct 24	\$ Change	% Change
5028.02 · Telephone	1,924.37	739.06	1,185.31	160.4%
5028.03 · Water	1,847.70	1,658.68	189.02	11.4%
5028.04 · Trash	985.40	879.68	105.72	12.0%
5028.05 · Sewer	4,846.09	4,112.05	734.04	17.9%
Total 5028 · UTILITIES	14,203.00	13,619.96	583.04	4.3%
5030 · SPECIAL DISTRICT EXPENSE				
5030.01 · District Operations	3,636.01	3,558.47	77.54	2.2%
5030.02 · Incident Operations	4,922.05	4,638.60	283.45	6.1%
5030.03 · Web Site	520.00	360.00	160.00	44.4%
5030.04 · Recruitment	174.00	0.00	174.00	100.0%
5030.05 · Reimbursable expenses	0.00	0.00	0.00	0.0%
5030.06 · Software/Licenses	25,305.31	21,629.14	3,676.17	17.0%
Total 5030 · SPECIAL DISTRICT EXPENSE	34,557.37	30,186.21	4,371.16	14.5%
5032 · Community Risk Reduction				
5032.01 · Public Education	949.91	2,544.62	-1,594.71	-62.7%
5032.02 · Supplies	1,191.61	80.20	1,111.41	1,385.8%
Total 5032 · Community Risk Reduction	2,141.52	2,624.82	-483.30	-18.4%
5035 · MINOR EQUIPMENT				
Communications	0.00	1,461.43	-1,461.43	-100.0%
Facilities	5,269.87	3,726.10	1,543.77	41.4%
Office	3,083.12	0.00	3,083.12	100.0%
Operations	18,013.21	2,619.68	15,393.53	587.6%
Total 5035 · MINOR EQUIPMENT	26,366.20	7,807.21	18,558.99	237.7%
5037 · CAPITALIZED EXPENSES				
Facilities	26,778.83	133,339.82	-106,560.99	-79.9%
Operations	47.55	0.00	47.55	100.0%
Total 5037 · CAPITALIZED EXPENSES	26,826.38	133,339.82	-106,513.44	-79.9%
8000.00 · DEBT SERVICE FUND				
8000.01 · POB				
POB - Interest	12,961.46	80,078.60	-67,117.14	-83.8%
POB - Principal	230,000.00	215,000.00	15,000.00	7.0%
Total 8000.01 · POB	242,961.46	295,078.60	-52,117.14	-17.7%
8000.02 · ECAA Solar				
Interest	-94.46	0.00	-94.46	-100.0%
Total 8000.02 · ECAA Solar	-94.46	0.00	-94.46	-100.0%
Total 8000.00 · DEBT SERVICE FUND	242,867.00	295,078.60	-52,211.60	-17.7%
Total Expense	2,635,277.97	2,590,167.98	45,109.99	1.7%
Net Ordinary Income	-2,148,392.75	-1,972,107.64	-176,285.11	-8.9%
Net Income	-2,148,392.75	-1,972,107.64	-176,285.11	-8.9%

Portfolio Analysis

10/31/2025

Total cost of accounts (cash value)	\$5,779,284.55
Value of accounts (market value)	\$6,041,620.46
Unrealized gain/loss \$ (market v - cash v)	\$262,335.91
Unrealized gain/loss %	4.54%
Average earning % CD	1.85%

Investment Name	Broker/Dealer	CUSIP	Maturity Date	Term in Months	Interest Rate	Month End Stmt Balance	Quantity	Purchase Price Per Unit	Market Price	Market Value	Gain/Loss (\$)	Gain/Loss (%)
-----------------	---------------	-------	---------------	----------------	---------------	------------------------	----------	-------------------------	--------------	--------------	----------------	---------------

JPMorgan Chase Bank (CD)	Ameriprise/Comerica	48128UNSA	4/16/2029	102	1.00%	1000 \$	100.00	\$	89.52	\$ 89,520.00	↓ \$ (10,480.00)	-10.48%
JPMorgan Chase Bank (CD)*	Ameriprise/Comerica	48128UZF9	2/15/2030	108	1.10%	1500 \$	100.00	\$	88.92	\$ 133,380.00	↓ \$ (16,620.00)	-11.08%

AMERIPRISE (COMERICA) - ECONOMIC

Federal Farm CR BKS Cons	Comerica	3133ENWU0	5/17/2032	113	4.30%	1350 \$	100.00	\$	98.61	\$ 133,123.50	↑ \$ 1,582.50	1.18%
Jonesboro ST BK	Comerica	48040PJ/A4	9/16/2035	180	1.00%	1660 \$	100.00	\$	76.85	\$ 127,574.32	↓ \$ (38,425.68)	-23.15%

SRPL FUNDS

CA CLASS/SRPL	CA CLASS	Money Mkt			4.39%	250,204.56 \$	1.00	\$	266,121.07	\$ 266,121.10	↑ \$ 15,916.54	6.36%
LAIF	LAIF	Local Agency Inv.Fund			4.48%	5417.55 \$	1.00	\$	6,278.68	\$ 5,417.55	⇒ \$ -	0.00%

COMMITTED & ASSIGNED

LAIF	LAIF	Local Agency Inv.Fund			4.48%	725.97 \$	1.00	\$	725.97	\$ 1,066.73	↑ \$ 340.76	46.94%
CB&T	CB&T	Money Mkt			0.30%	76,071.22 \$	1.00	\$	76,071.22	\$ 76,173.35	↑ \$ 102.13	0.13%
CA CLASS: PRIME	CA CLASS	Money Mkt			4.39%	3,547,454.33 \$	1.00	\$	3,547,454.33	\$ 3,793,664.39	↑ \$ 246,210.06	6.94%
CA CLASS 1%	CA CLASS	Investment Account			4.39%	18,217.40 \$	1.00	\$	18,217.40	\$ 18,938.70	↑ \$ 721.30	3.96%
CA CLASS: ENHANCED	CA CLASS	Investment Account			4.39%	1,181,893.48 \$	1.00	\$	1,181,893.48	\$ 1,243,613.13	↑ \$ 61,719.65	5.22%
AMERIPRISE-COMERICA 1002.13	Comerica	Money Mkt				502.14 \$	1.00	\$	502.14	\$ 502.14	⇒ \$ -	0.00%
AMERIPRISE-COMERICA 1002.14	Comerica	Money Mkt				141.81 \$	1.00	\$	141.81	\$ 298.73	↑ \$ 156.92	110.66%
US BANK PARS 115	US Bank	Money Mkt				24,999.01	1.00	\$	23,041.67	\$ 24,183.40	↑ \$ 1,141.73	4.96%

UNASSIGNED

CB&T -8473	CB&T	Checking				128,043.42 \$	1.00	\$	128,043.42	\$ 128,043.42	⇒ \$ -	0.00%
Total						5,779,284.55			6,041,620.46	\$ 262,335.91	4.54%	

* Callable

BASE VALUE	MARKET VALUE
\$ 5,417.55	\$ 5,417.55 LAIF / SRPL
\$ 725.97	\$ 1,066.73 LAIF/AFP
\$ 250,502.14	\$ 223,402.14 Ameriprise-Comerica
\$ 297,712.81	\$ 260,996.55 Ameriprise-Comerica
\$ 23,041.67	\$ 24,183.40 US Bank
\$ 3,547,454.33	\$ 3,793,664.39 CA CLASS
\$ 18,217.40	\$ 18,938.70 CA CLASS 1%
\$ 250,204.56	\$ 266,121.10 CA CLASS / SRPL
\$ 1,181,893.48	\$ 1,243,613.13 CA CLASS / ENHANCED
\$ 76,071.22	\$ 76,173.35 CB&T
\$ 5,681,241.13	\$ 5,913,577.04
\$ 255,622.11	\$ 271,538.65 SRPL
\$ 5,395,619.02	\$ 5,642,038.39 GENERAL
\$ 5,681,241.13	\$ 5,913,577.04

Monthly Incident Report

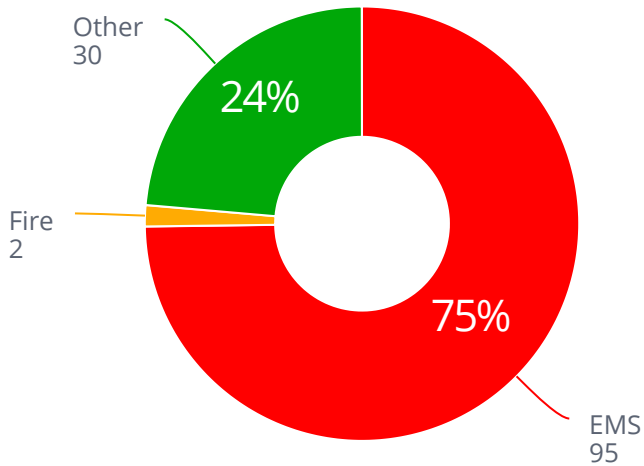
Count of Total Incidents & Exposures

Count of Incidents

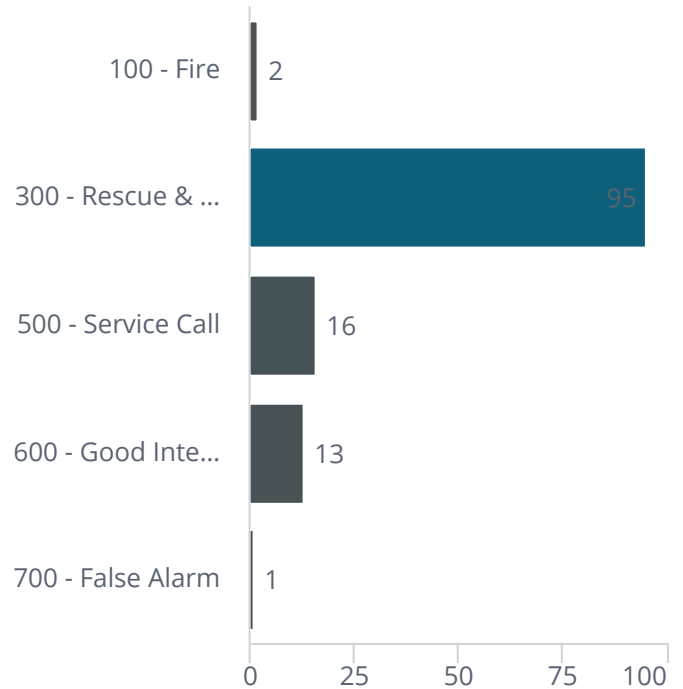
127

Count of Exposures 127

EMS/Fire Incident Breakdown



Count of Incidents by Incident Type



ALPINE FIRE PROTECTION DISTRICT – STAFF REPORT

Agenda Item: 9.4
Meeting Date: November 18, 2026
Submitted By: Chief Boggeln
Subject: Station 17 HVAC Project



RECOMMENDATION:

Staff recommends the Board of Directors authorize the Fire Chief to enter into a contract with Southwest Mechanical Services for the Station 17 HVAC Project in an amount not to exceed \$119,600.00, and to execute any necessary change orders within the approved project budget.

DISCUSSION:

Station 17's existing HVAC system has reached the end of its service life and requires replacement to ensure reliable climate control, energy efficiency, and occupant comfort. Staff solicited proposals for the replacement and installation of a new HVAC system in accordance with the District's procurement policies.

After reviewing all proposals, staff determined that Southwest Mechanical Services submitted the most responsive and responsible bid, meeting all project specifications and offering the best overall value to the District. The proposed scope of work includes removal of the existing units, installation of new high-efficiency HVAC systems, ductwork adjustments as necessary, and system testing and commissioning.

FISCAL IMPACT:

Funding for the Station 17 HVAC Project in the amount of \$110,000 was included in the approved Capital Improvement Budget. Staff will monitor Budget Line Item 5037 – Facilities to determine if a budget adjustment is necessary in January. The total proposed contract amount with Southwest Mechanical Services is \$119,600.00

BID SUBMITTAL FORM

Project: Removal and Replacement of Three (3) Rooftop HVAC Units
Owner: Alpine Fire Protection District
Address: 1364 Tavern Road, Alpine, CA 91901
Bid Due Date: October 9, 2025 at 4:00 p.m.

The undersigned hereby proposes and agrees to furnish all labor, materials, equipment, permits, insurance, and supervision necessary to complete the work in accordance with the Request for Bids issued by the Alpine Fire Protection District.

CONTRACTOR INFORMATION

Company Name:	Southwest Mechanical Services, Inc.
Contractor's License No.:	1090100
Contact Person:	Randy Signore
Address:	1521 Greenfield Dr. Suite D, El Cajon CA 92021
Phone Number:	(619) 499-7743
Email:	Estimating@swhvacservice.com

BID AMOUNT

Base Bid (Removal and Replacement of Three Rooftop HVAC Units):

\$ 119,600.00

Add Alternate (if applicable): \$ 107,300.00

Hourly Rate for Additional Ducting Repairs (per man-hour): \$ 160.00

PRODUCT INFORMATION

Proposed Manufacturer and Model or Models (Attach the model specification sheet and any potential rebates):

ATTACHED

REFERENCES

List or attach 3 references with contact information for similar projects:

Please see attached document titled References.

ACKNOWLEDGEMENTS

The undersigned acknowledges and agrees to the following:

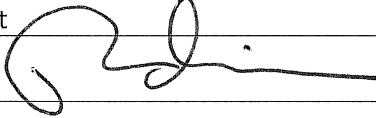
- 1. I have examined the Request for Bids and all related documents.
- 2. I am aware of and will comply with all insurance, licensing, and permitting requirements.
- 3. I accept the terms, conditions, and requirements outlined in the Request for Bids.
- 4. I have conducted (or waive) a site visit and field verification of project conditions.

SIGNATURE

Contractor Name: Southwest Mechanical Services, Inc.

Authorized Representative: Randy Signore

Title: President

Signature:  _____

Date: 10-9-2025



AIR CONDITIONING • HEATING • REFRIGERATION • CONTROLS

October 9, 2025

RE: RFP – Removal and replacement of (3) HVAC units

Attn: Chief Brian Boggeln

Dear Mr. Boggeln,

We are attaching this letter to our RFP response bid documents to inform you of some potential structural Issues with the new unit weights. The new units additional weights will trigger a structural engineers review required by the County prior to installation.

Weights:

<u>Unit size</u>	<u>old unit Weight</u>	<u>new unit weight</u>
7.5 ton	1066 lbs	1209
5 ton	666 lbs	1147

Our base bid Price includes the cost of a structural engineers review with a stamped letter of approval. If there is any structural enhancements required, this bid does not include additional building support. Based on the steel building structure installed we do not anticipate additional work, but a review of drawings is required to determine this.

Our base bid also includes a complete new Trane SC control system as per attached scope.

We provided a alternate bid to install standard efficient units that will not trigger any structural review. Our alternate bid also includes the Trane Control system.

All work includes a two year warranty.

Sincerely, 

Randy Signore
President
Southwest Mechanical Services, Inc.
1251 Greenfield Dr. STE D
El Cajon, CA. 92021
Randy@swhvacservice.com
619-922-8354

References

CBRE, Inc. – HVAC Replacements

Contact Person: Ernie Matteotti

Email Address: ernie.matteotti@cbre.com

Phone Number: (858) 688-9342

Project Description: Replaced aging HVAC units to improve system performance and energy efficiency. Scope included equipment removal, installation of new units, and associated electrical and structural work.

Contract Value: \$79,456

Date of Completion: Q4 2024

Vista Unified School District – HVAC Replacements Phase 1

Contact Person: Sean Sandera

Email Address: ssandera@gafcon.com

Phone Number: (760) 473-2680

Project Description: Phase 1 of a multi-phase cross campus unit replacement project. Remove existing equipment, install new units, and perform startup.

Contract Value: \$377,221

Date of Completion: Q3 2024

Rady Children Hospital SD – Sanford Boiler Replacements

Contact Person: Brian Patton

Email Address: BPatton@RCHSD.org

Phone Number: (619) 892-1672

Project Description: Removed the existing boilers and installed new units, along with all necessary electrical and mechanical connections.

Contract Value: \$142,000

Date of Completion: Q1 2025

To verify most current certification status go to: <https://www.caleprocure.ca.gov>



Office of Small Business & DVBE Services

Certification ID: 2030871

Legal Business Name:

Southwest Mechanical Services, Inc.

Doing Business As (DBA) Name 1:

Southwest Mechanical Services, Inc.

Doing Business As (DBA) Name 2:

Southwest Mechanical Services, Inc.

Address:

1251 Greenfield Dr

Suite D

EL CAJON

CA 92021

Email Address:

breanna@swhvacservice.com

Business Web Page:

Business Phone Number:

619/499-7743

Business Fax Number:

Business Types:

Construction

Certification Type	Status	From	To
DVBE	Approved	06/03/2024	06/30/2026
SB(Micro)	Approved	03/12/2024	06/30/2026
SB-PW	Approved	03/12/2024	06/30/2026

Stay informed! KEEP YOUR CERTIFICATION PROFILE UPDATED!

-LOG IN at [CaleProcure.CA.GOV](https://www.caleprocure.ca.gov)

Questions?

Email: OSDSHELP@DGS.CA.GOV

Call OSDS Main Number: 916-375-4940

707 3rd Street, 1-400, West Sacramento, CA 95605



Contractor's License Detail for License # 1090100

DISCLAIMER: A license status check provides information taken from the CSLB license database. Before relying on this information, you should be aware of the following limitations.

- ▶ CSLB complaint disclosure is restricted by law (B&P 7124.6) If this entity is subject to public complaint disclosure click on link that will appear below for more information. Click here for a definition of disclosable actions.
- ▶ Only construction related civil judgments reported to CSLB are disclosed (B&P 7071.17).
- ▶ Arbitrations are not listed unless the contractor fails to comply with the terms.
- ▶ Due to workload, there may be relevant information that has not yet been entered into the board's license database.

Data current as of 4/30/2024 3:29:00 PM

Business Information

SOUTHWEST MECHANICAL SERVICES INC
 1251 GREENFIELD DR
 SUITE D
 EL CAJON, CA 92021
 Business Phone Number:(619) 499-7743

Entity Corporation
Issue Date 04/15/2022
Expire Date 04/30/2026

License Status

This license is current and active.

All information below should be reviewed.

Classifications

C20 - WARM-AIR HEATING, VENTILATING AND AIR-CONDITIONING

Bonding Information

Contractor's Bond

This license filed a Contractor's Bond with NORTH RIVER INSURANCE COMPANY (THE).
Bond Number: 04CF606847
Bond Amount: \$25,000
Effective Date: 01/01/2023
 Contractor's Bond History

Bond of Qualifying Individual

The qualifying individual RANDALL ANTHONY SIGNORE certified that he/she owns 10 percent or more of the voting stock/membership interest of this company; therefore, the Bond of Qualifying Individual is not required.
Effective Date: 04/15/2022

Workers' Compensation

This license has workers compensation insurance with the EMPLOYERS PREFERRED INSURANCE COMPANY
Policy Number:EIG497894002
Effective Date: 04/08/2024
Expire Date: 04/08/2025
 Workers' Compensation History



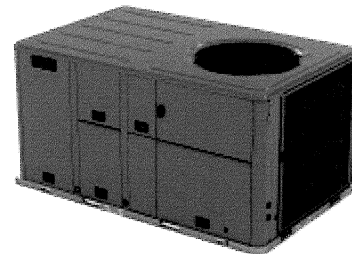
Trane Precedent Packaged Rooftop

Unit Overview - YHK090A3SOL **00D0000100B500000000000000

Application	Unit Size	Supply Fan		External Dimensions (in.)			Operating Weight	Elevation
		Airflow	Total Static Pressure	Height	Width	Length		
DX Cooling / Gas Heat	7.5 Ton	3000 cfm	1.714 in H2O	4.24 ft	4.44 ft	7.34 ft	1209.0 lb	0.00 ft

Unit Features

Unit Efficiency	High Efficiency
Refrigerant	R-454B Refrigerant
EER @ AHRI	12.10
IEER @ AHRI	17.20
Hinged Service Access/Filters	Standard Access Panels with 2-in MERV 13



Unit Electrical

Voltage	208-230/60/3
MCA	43.00 A
MOP	50.00 A
Condenser Fan FLA	3.30 A
Evaporator Fan FLA	8.80 A
Compressor 1 RLA	16.50 A
Compressor 2 RLA	9.90 A
Compressor Power	5.95 kW
System Power	8.13 kW

Controls

Unit Controls	Symbio 700
Communications Option	Advanced Controls and BACnet BAS
System Monitoring Controls 1	Clogged Filter & Discharge Air
SupplyFan/Drive/MotorType	Multi-speed Motor
Smoke Detector	Supply Air

Cooling Section

	Capacity
Entering Dry Bulb	80.00 F
Entering Wet Bulb	67.00 F
Ambient Temp	95.00 F
Leaving Coil Dry Bulb	57.24 F
Leaving Coil Wet Bulb	56.78 F
Leaving Unit Dry Bulb	59.03 F
Leaving Unit Wet Bulb	57.48 F
Saturated Discharge Temperature	117.91 F
Saturated Suction Temperature	54.50 F
	Gross Total 93.62 MBh
	Gross Latent 20.63 MBh
	Gross Sensible 73.00 MBh
	Net Total 89.73 MBh
	Net Sensible 69.10 MBh
	Net Sensible Heat Ratio 77.00 %
	Fan Motor Heat 2.09 MBh
	Refrig Charge-Circuit 1 7.6 lb

Heating Section

Heating	Low Gas Heat
Input Heating Capacity	120.00 MBh
Output Heating Capacity	97.20 MBh
Heating EAT	60.00 F
Heating LAT	89.71 F
Heating Temp Rise	29.71 F
Heating Stages	2



Job Name: Alpine Fire Station 17 RTU Replacement
 Prepared For:
 Unit Tag: AC-1
 Quantity: 1

Fan Section

Indoor Fan Data		Indoor Fan Performance	
Airflow Application	Horizontal	Airflow	3000 cfm
Design ESP	1.000 in H2O	Supply Motor Horsepower	3.000 hp
Component SP	0.382 in H2O	Total Supply Motor Operating Power	1.760 hp
Heat SP	0.332 in H2O	Indoor RPM	1371 rpm
Total SP	1.714 in H2O	Outdoor Fan Data	
Indoor Fan Drive Type	Variable Direct	Outdoor Fan Drive Type	Direct
Indoor Fan Quantity	1	Outdoor Fan Quantity	1
Indoor Fan Type	BC Plenum	Outdoor Fan Type	Propeller
		Filters	
		1st Filter Size and Qty	2 - 18 x 24 x 2
		2nd Filter Size and Qty	3 - 24 x 16 x 2

Field Installed Accessories

Enthalpy kit	Reference enthalpy kit
Fresh air selection	Low Leak Economizer, Dry Bulb, Horiz
CO2 sensor kit	CO2 wall mounted

Acoustics

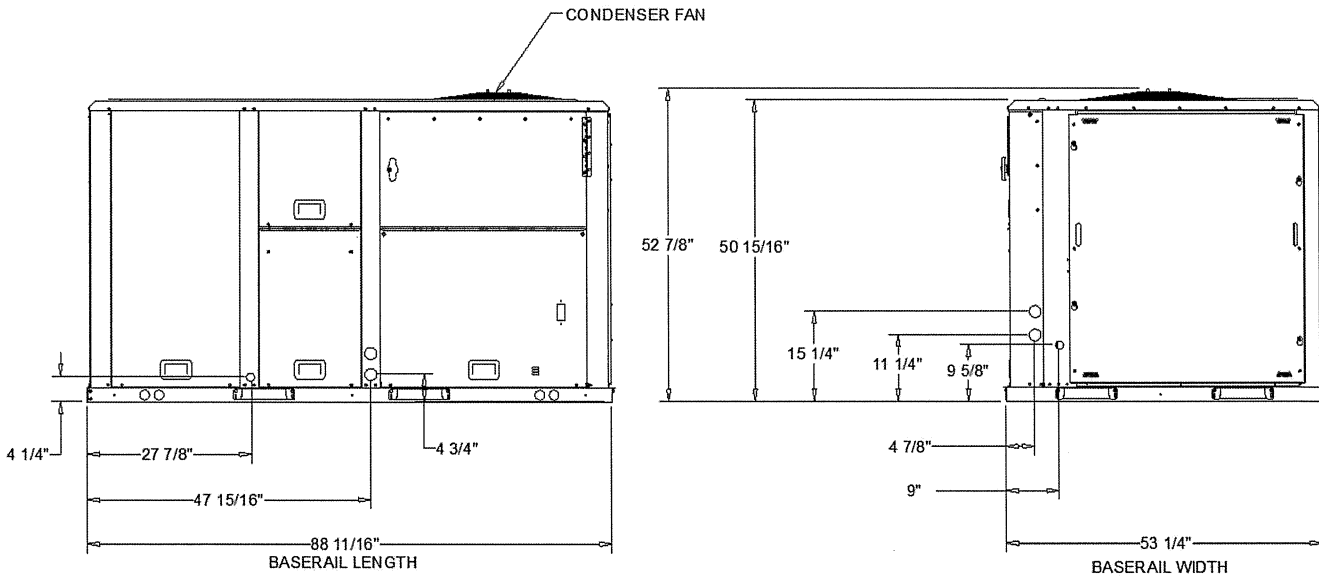
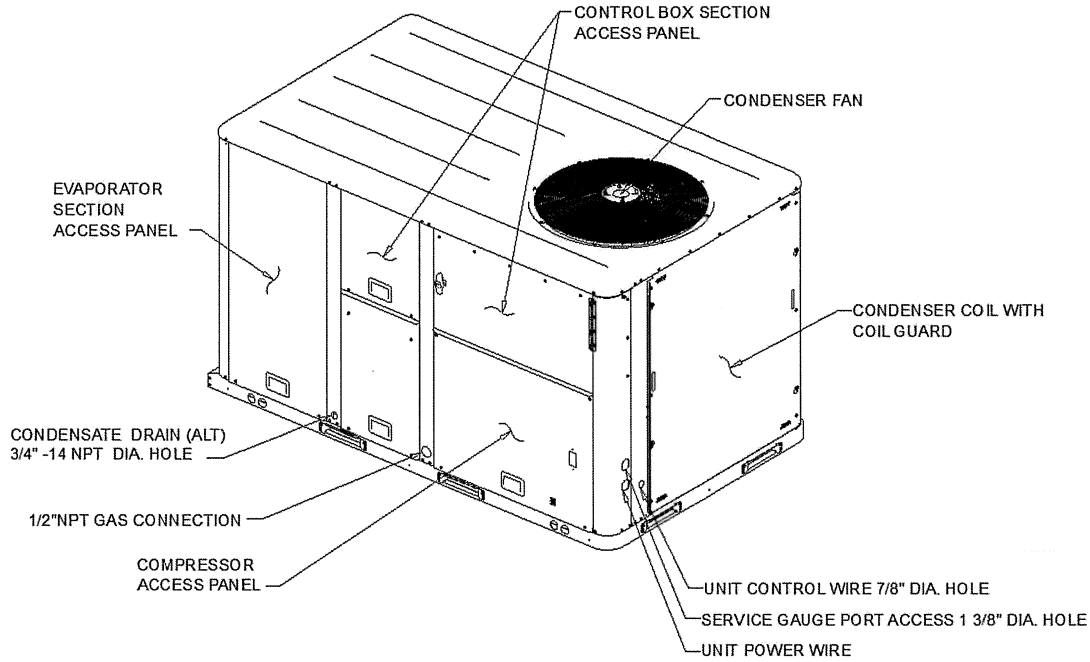
Sound Path	63 Hz	125 Hz	250 Hz	500 Hz	1 kHz	2 kHz	4 kHz	8 kHz
Ducted Discharge	80 dB	90 dB	78 dB	75 dB	70 dB	66 dB	66 dB	67 dB
Ducted Inlet	76 dB	76 dB	73 dB	61 dB	59 dB	56 dB	57 dB	57 dB
Outdoor Noise	84 dB	86 dB	84 dB	85 dB	82 dB	77 dB	73 dB	67 dB

Note: Ducted Discharge/Ducted Inlet prediction data conform to AHRI 260



Job Name: Alpine Fire Station 17 RTU Replacement
Prepared For:
Unit Tag: AC-1
Quantity: 1

NOTES:
1. VERIFY WEIGHTS, CONNECTIONS, AND ALL DIMENSIONS WITH
INSTALLER DOCUMENTS BEFORE INSTALLATION

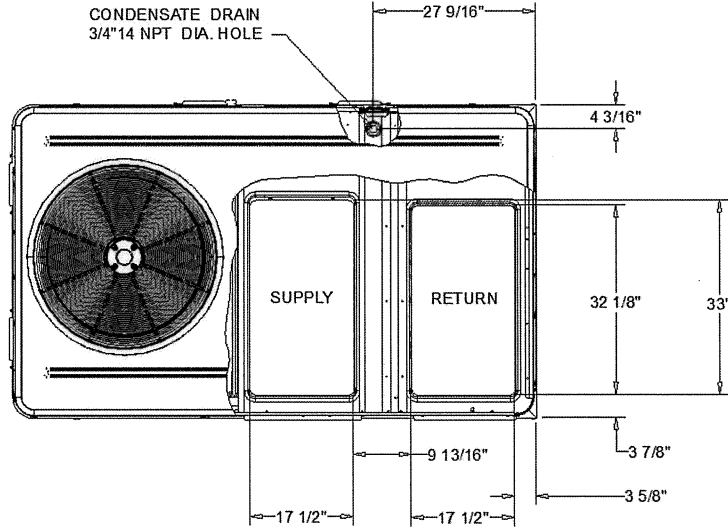


DX COOLING / GAS HEAT HIGH EFFICIENCY

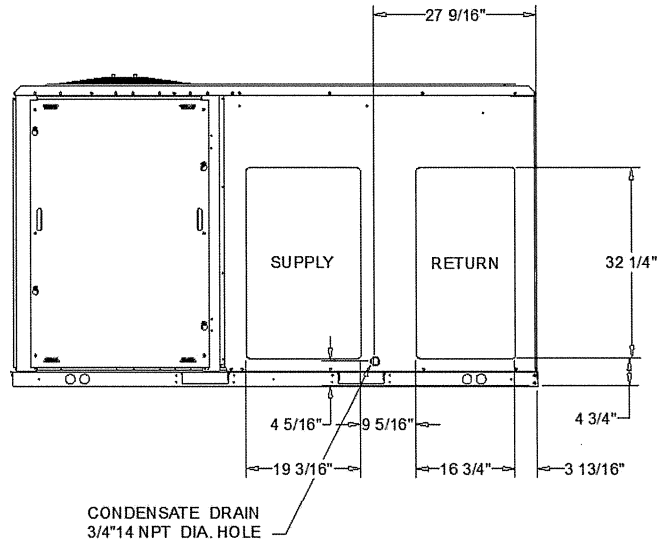
DIMENSION DRAWING



Job Name: Alpine Fire Station 17 RTU Replacement
Prepared For:
Unit Tag: AC-1
Quantity: 1



PLAN VIEW OF DOWNFLOW OPENINGS



HORIZONTAL AIR FLOW OPENING

DX COOLING / GAS HEAT HIGH EFFICIENCY

DIMENSION DRAWING



Job Name: Alpine Fire Station 17 RTU Replacement
 Prepared For:
 Unit Tag: AC-1
 Quantity: 1

NOTES:

1. APPROX. INSTALLED WEIGHT INCLUDES ALL SELECTED OPTIONS AND ACCESSORIES.
2. CORNER WEIGHTS ARE FOR BASE UNIT ONLY AND DO NOT INCLUDE OPTIONS OR ACCESSORIES.
3. WEIGHT INCLUDES BOTH FACTORY AND FIELD INSTALLED ACCESSORY.

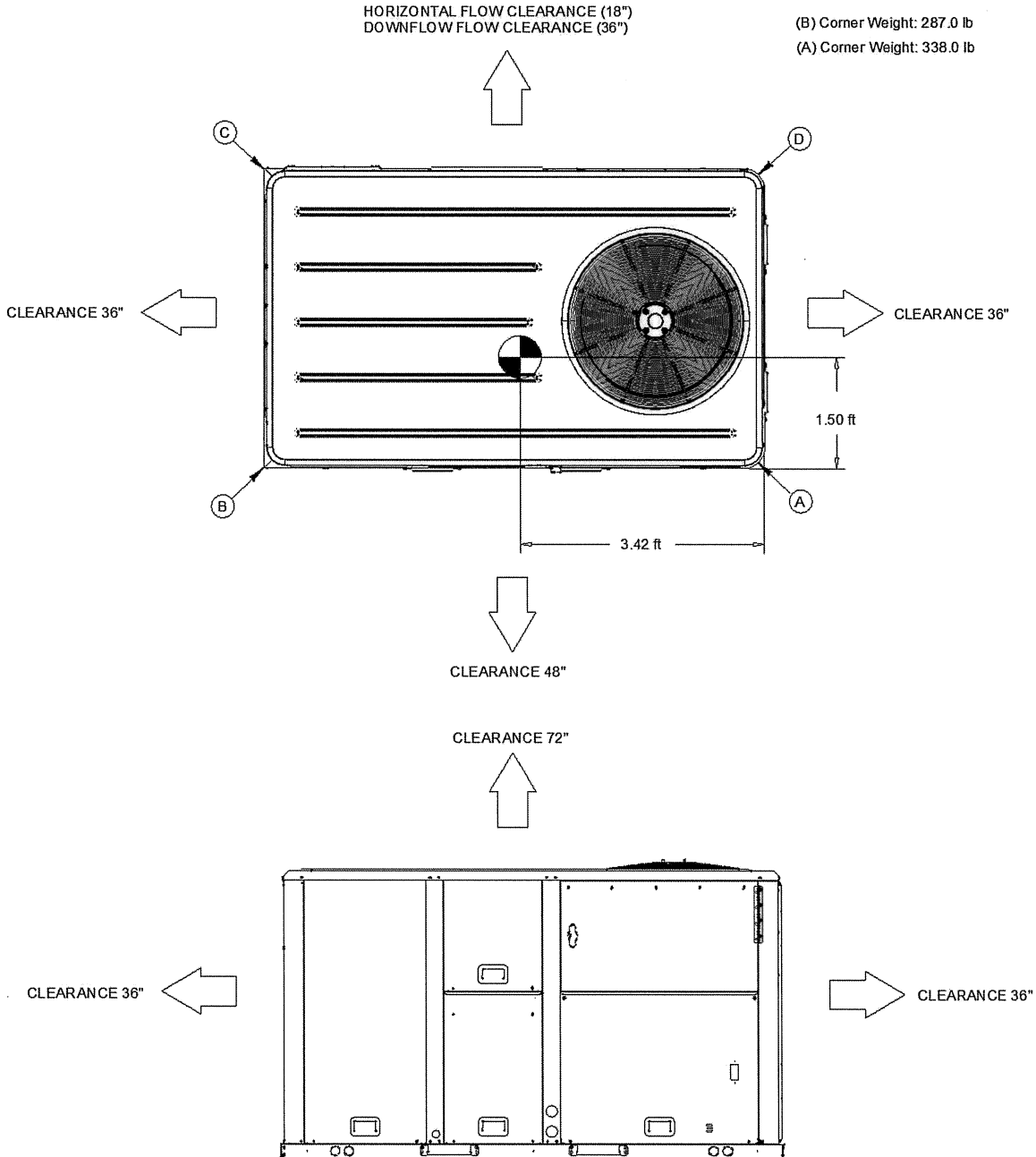
Approximate Installed Weight: 1,209.0 lb

(B) Corner Weight: 287.0 lb

(C) Corner Weight: 158.0 lb

(A) Corner Weight: 338.0 lb

(D) Corner Weight: 183.0 lb

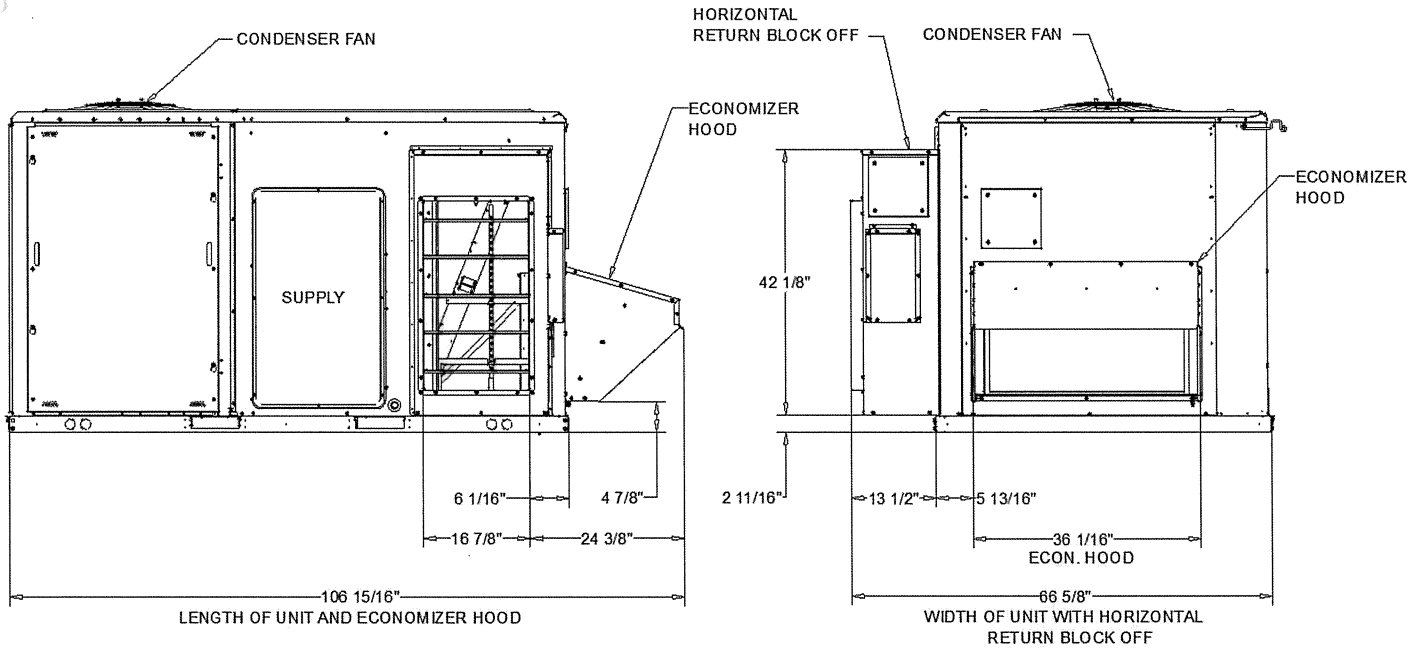
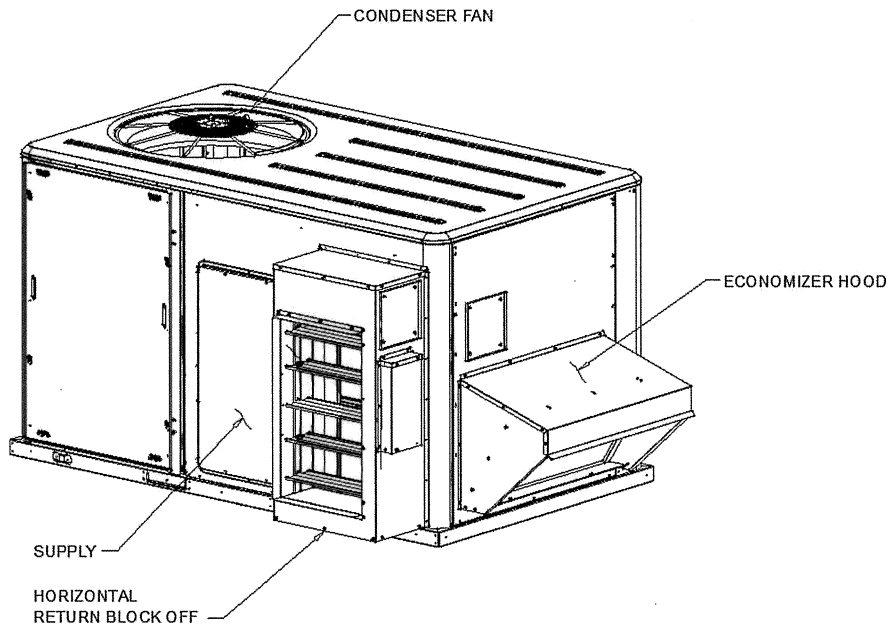


DX COOLING / GAS HEAT HIGH EFFICIENCY

WEIGHTS AND CLEARANCES



Job Name: Alpine Fire Station 17 RTU Replacement
Prepared For:
Unit Tag: AC-1
Quantity: 1



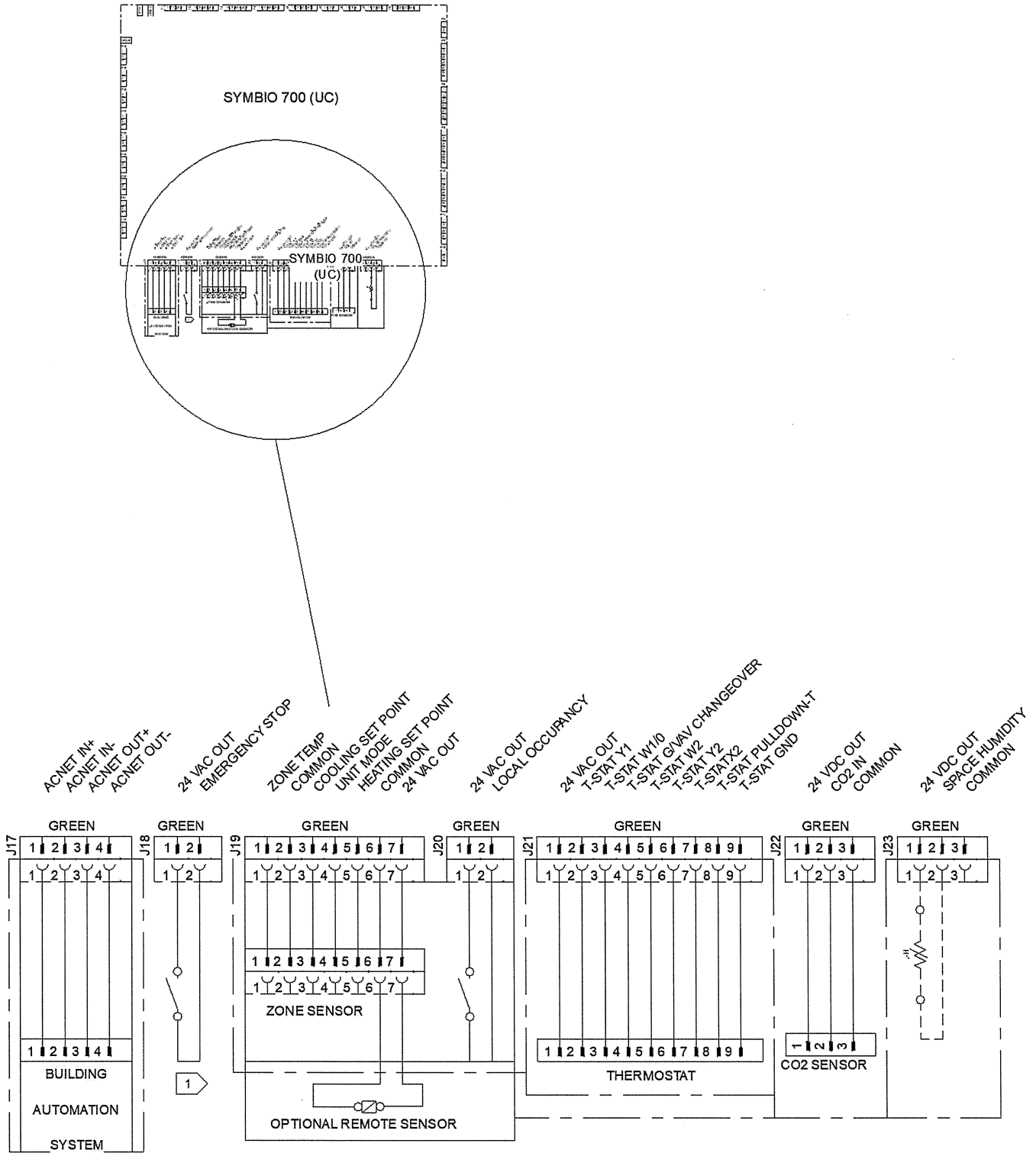
LOW LEAK ECONOMIZER AIR DAMPER (FIELD ACCESSORY)

DX COOLING / GAS HEAT HIGH EFFICIENCY



Job Name: Alpine Fire Station 17 RTU Replacement
Prepared For:
Unit Tag: AC-1
Quantity: 1

NOTES:
1. VERIFY WEIGHT, CONNECTION, AND ALL DIMENSION WITH
INSTALLER DOCUMENTS BEFORE INSTALLATION

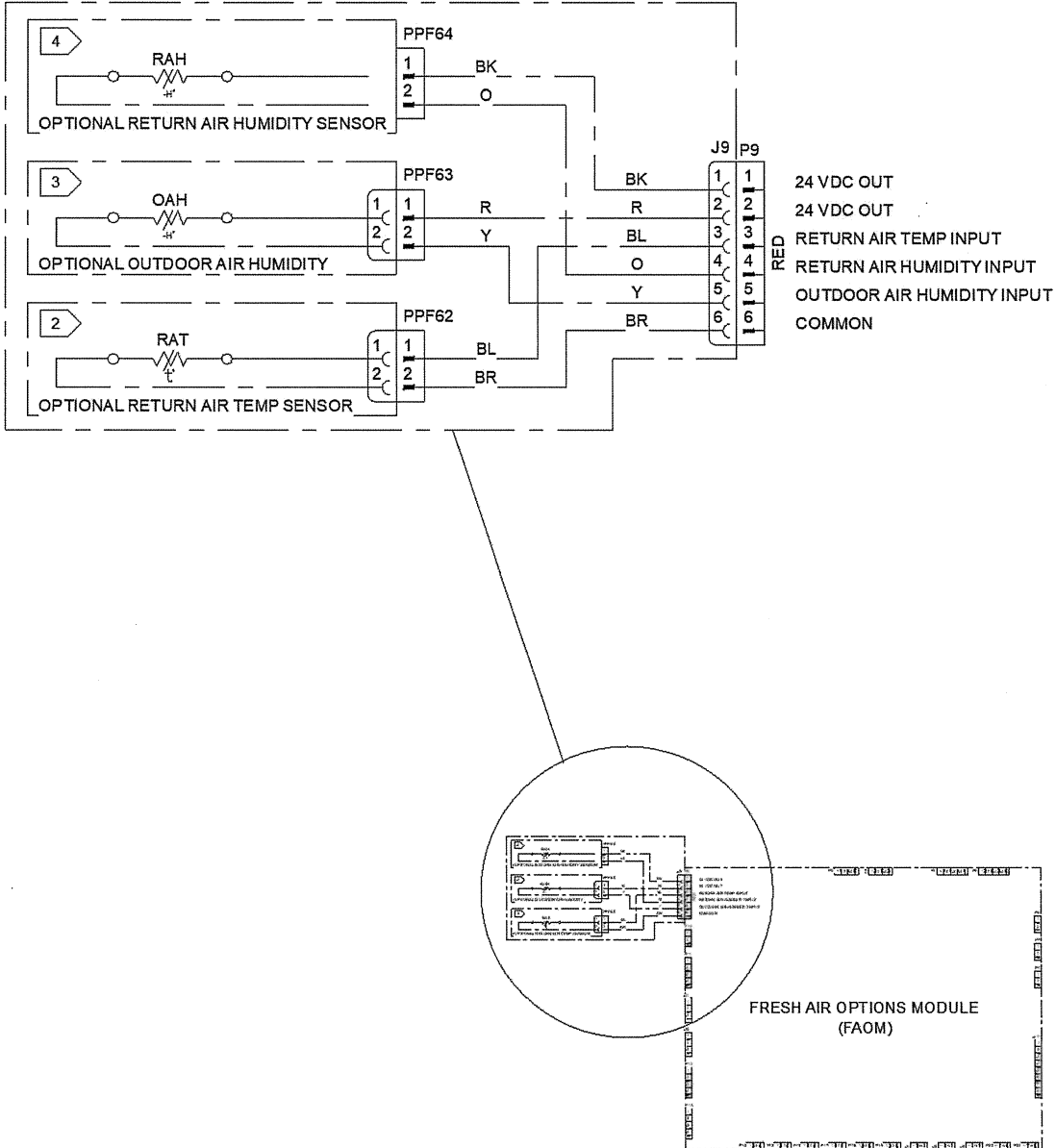


SYMBIO 700 (J17, J18, J19, J20, J21, J22, AND J23)

FIELD WIRING DRAWING



NOTES:
 1. VERIFY WEIGHT, CONNECTION, AND ALL DIMENSION WITH
 INSTALLER DOCUMENTS BEFORE INSTALLATION



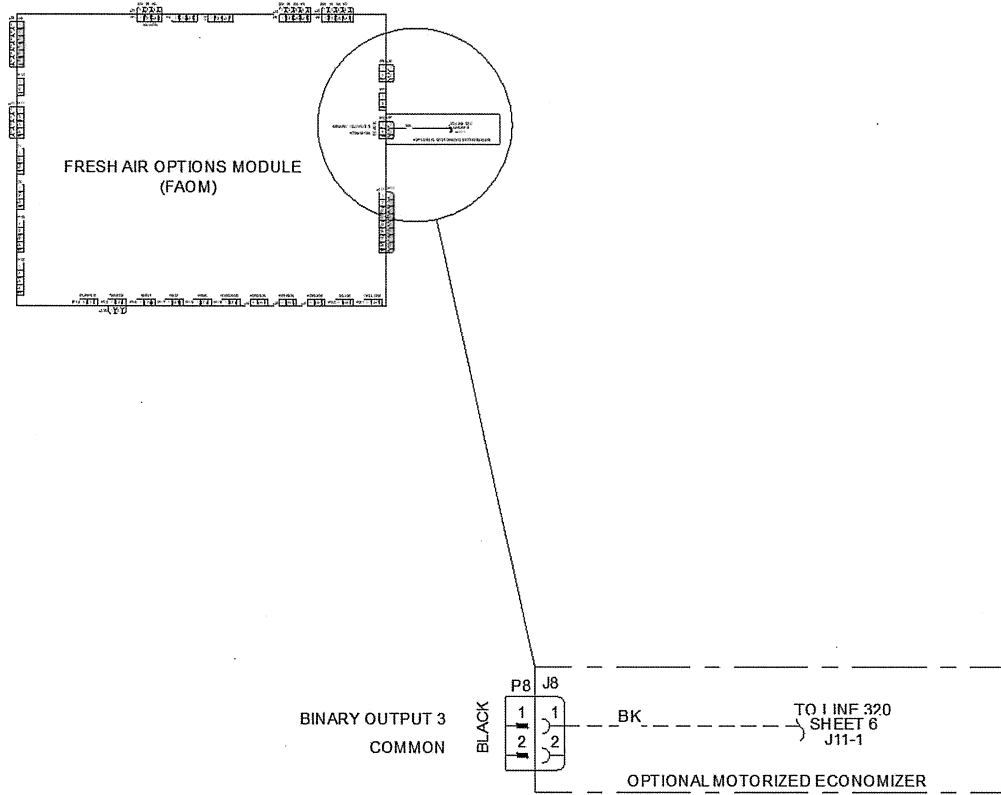
OPTIONAL RETURN AIR HUMIDITY SENSOR, OUTDOOR AIR & RETURN AIR TEMP SENSOR (J9)
 FIELD WIRING DRAWING (FRESH AIR OPTIONS MODULE)



Job Name: Alpine Fire Station 17 RTU Replacement
 Prepared For:
 Unit Tag: AC-1
 Quantity: 1

NOTES:

1. VERIFY WEIGHT, CONNECTION, AND ALL DIMENSION WITH INSTALLER DOCUMENTS BEFORE INSTALLATION

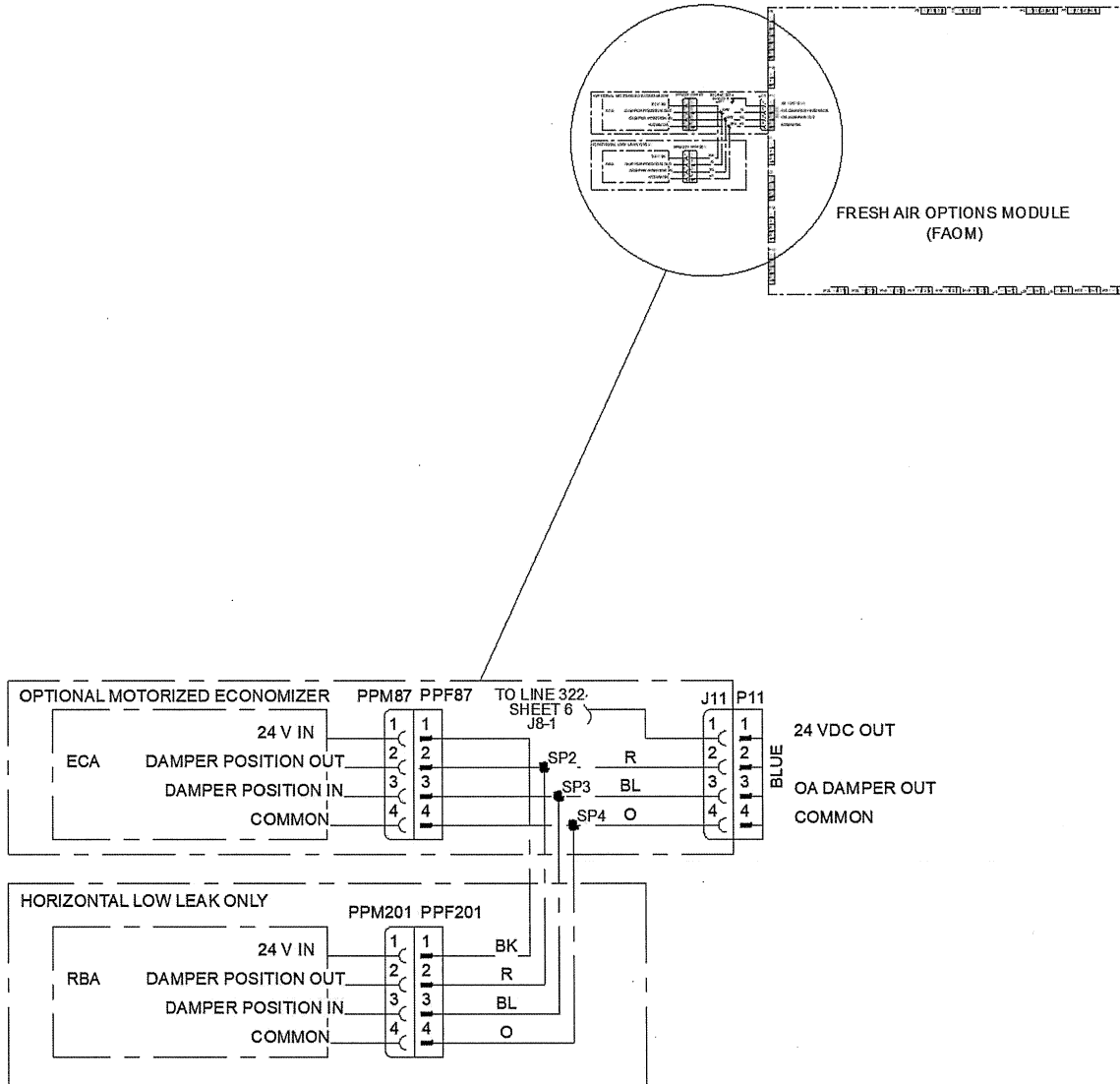


OPTIONAL MOTORIZED ECONOMIZER (J8)
 FIELD WIRING DRAWING (INDOOR OPTION MODULE)



Job Name: Alpine Fire Station 17 RTU Replacement
Prepared For:
Unit Tag: AC-1
Quantity: 1

NOTES:
1. VERIFY WEIGHT, CONNECTION, AND ALL DIMENSION WITH
INSTALLER DOCUMENTS BEFORE INSTALLATION



OPTIONAL MOTORIZED ECONOMIZER WITH HORIZONTAL LOW LEAK ONLY (J11)
FIELD WIRING DRAWING (FRESH AIR OPTIONS MODULE)



General

Packaged rooftop unit cooling capacities, heating capacities, and efficiencies are certified to the following standards:

- 3 to 5 ton units: AHRI Standard 210/240.
- 6 to 25 ton units: AHRI Standard 340/360.
- Gas Heating Units: ANSI Z21.47 and 10 CFR Part 431 for Commercial Warm Air.
- Convertible airflow.
- Symbio? controls operating range between 40°F and 125°F in cooling mode standard from the factory. Field-installed low ambient kit extends operating range down to 0°F.
- Factory assembled, internally wired, fully charged, and 100 percent run tested to verify cooling operation, fan and blower rotation, and control sequence.
- Colored and numbered wiring internal to the unit for simplified identification.
- cULus listed and classified in accordance for Central Cooling Air Conditioners.
- Unit shall be furnished with a leak detection system from the factory

Casing

- Zinc coated, heavy gauge, galvanized steel.
- Weather resistant pre-painted metal with galvanized substrate.
- Meets ASTM B117, 672 hour salt spray test.
- Removable single side maintenance access panels.
- Lifting handles in maintenance access panels (can be removed and reinstalled by removing fasteners while providing a water and air tight seal).
- Exposed vertical panels and top covers in the indoor air section insulated with a cleanable foil-faced, fire-retardant permanent, odorless glass fiber material.
- Base pan shall have no penetrations within the perimeter of the curb other than the raised 1 inch high downflow supply/return openings to provide an added water integrity precaution, if the condensate drain backs up.
- Base of the unit insulated with 1/8 inch, foil-faced, closed-cell insulation.
- Unit base provisions for forklift and/or crane lifting on three sides of unit.

Hail Guards

- Provides condenser coil protection.

Microchannel Coils

- Optimal heat transfer performance due to flat, streamlined tubes with small ports, and metallurgical tube-to-fin bond.
- Reduce system refrigerant charge by up to 50% leading to better compressor reliability.
- Compact all-aluminum microchannel coils reduce the unit weight.
- Recyclable all aluminum coils All aluminium construction minimizes galvanic corrosion.
- Strong aluminum brazed structure provides better fin protection.
- Flat streamlined tubes more dust resistant and easy to clean.
- Coils leak tested at the factory to ensure the pressure integrity.

Compressors

- All units have direct-drive, hermetic, scroll type compressors with centrifugal type oil pumps.
- Suction gas-cooled motor with voltage utilization range of plus or minus 10 percent of unit nameplate voltage.
- Internal overloads standard with scroll compressors.
- Three stages of cooling available on 6 to 17.5 tons units and four stages of cooling available on 20 and 25 tons units.

Filters

- Two inch pleated media filters shall be available on all models.

Frostat

- Utilized as a safety device.
- Opens to prevent freezing temperatures on evaporator coil.
- Temperature will need to rise to 50°F before closing.
- Utilized in low airflow or high outside air applications (cooling only).



Heating Section

- The heating section shall have a progressive tubular heat exchanger with corrosion-resistant aluminized steel tubes and burners as standard on all models.
- Stainless steel heat exchanger with 409 stainless steel tubes and 439 stainless steel burners shall be optional.
- Induced draft combustion blower shall be used to pull the combustion products through the firing tubes.
- Heater shall use a direct spark ignition (DSI) system.
- On initial call for heat, the combustion blower shall purge the heat exchanger for 20 seconds before ignition.
- After three unsuccessful ignition attempts, entire heating system shall be locked out until manually reset at the thermostat/zone sensor.
- Units shall be suitable for use with natural gas or propane (field-installed kit).

Indoor Fan

- Direct drive plenum fan design - 6 to 25 tons units.
- Plenum fan design - backward-curved fan wheel along with an external rotor direct drive variable speed indoor motor.
- Supply fan speed adjustments can be made using the Symbio 700 or Mobile App.
- Motors are thermally protected.
- Variable speed direct drive motors are high efficiency - 6 to 25 tons.

Heat Exchanger

- Compact cabinet features a tubular heat exchanger in low, medium and high heat capacities.
- Corrosion-resistant aluminized steel tubes and burners are standard on all models.
- Induced draft blower to pull the gas mixture through the burner tubes.
- Direct spark ignition and a flame sensor as a safety device to validate the flame.

Reference or Comparative Enthalpy

- Reference enthalpy used to measure and communicate outdoor humidity.
- Unit receives and uses information to provide improved comfort cooling while using the economizer.
- Comparative enthalpy measures and communicates humidity for both outdoor and return air conditions, and return air temperature.
- Unit receives and uses information to maximize use of economizer cooling, and to provide maximum occupant comfort control.
- Reference or comparative enthalpy available when a factory or field installed downflow economizer ordered.

Low Leak Economizer

- This accessory meets the low leak requirements for ASHRAE 90.1, IECC, and CA Title 24 standards (4 cfm/ ft²@1" wg exterior air/return air). This option allows for 100% outdoor air supply from 0% to 100% modulating dampers and comes standard with barometric relief. It can be paired with powered exhaust for additional building pressure relief. This option can be paired with or without fault detection and diagnostics (FDD) to meet the current mandatory CA Title 24 requirements. The economizers come with four control options: dry bulb, reference enthalpy, comparative enthalpy, or differential dry bulb.



Trane Precedent Packaged Rooftop

Unit Overview - DHK060A3SCL**00D0000100B100000000000000

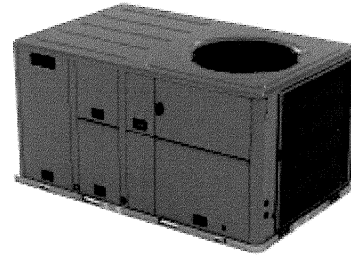
Application	Unit Size	Supply Fan		External Dimensions (in.)			Operating Weight	Elevation
		Airflow	Total Static Pressure	Height	Width	Length		
Heat Pump / Hybrid Heat	5 Ton	2000 cfm	1.031 in H2O	4.24 ft	4.44 ft	7.34 ft	1147.0 lb	0.00 ft

Unit Features

Unit Efficiency	High Efficiency
Refrigerant	R-454B Refrigerant
EER @ AHRI	13.60
SEER @ AHRI	16.40
EER2 @ AHRI	12.80
SEER2 @ AHRI	15.80
Hinged Service Access/Filters	Standard Access Panels with 2-in MERV 13

Unit Electrical

Voltage	208-230/60/3
MCA	31.00 A
MOP	45.00 A
Condenser Fan FLA	1.40 A
Evaporator Fan FLA	8.80 A
Compressor 1 RLA	15.90 A
Compressor 2 RLA	0.00 A
Compressor Power	3.86 kW
System Power	4.85 kW



Controls

Unit Controls	Symbio 700
Communications Option	Advanced Controls and BACnet BAS
System Monitoring Controls 1	Clogged Filter Switch
SupplyFan/Drive/MotorType	Multi-speed Motor
Smoke Detector	Supply Air

Cooling Section

	Capacity
Entering Dry Bulb	80.00 F
Entering Wet Bulb	67.00 F
Ambient Temp	95.00 F
Leaving Coil Dry Bulb	56.96 F
Leaving Coil Wet Bulb	56.88 F
Leaving Unit Dry Bulb	58.83 F
Leaving Unit Wet Bulb	57.61 F
Saturated Discharge Temperature	115.38 F
Saturated Suction Temperature	50.81 F
	Gross Total 61.35 MBh
	Gross Latent 12.78 MBh
	Gross Sensible 48.57 MBh
	Net Total 59.52 MBh
	Net Sensible 46.74 MBh
	Net Sensible Heat Ratio 79.00 %
	Fan Motor Heat 0.69 MBh
	Refrig Charge-Circuit 1 13.0 lb



Job Name: Alpine Fire Station 17 RTU Replacement
 Prepared For:
 Unit Tag: AC-2
 Quantity: 1

Heating Section

Heat Type	Low NOx Gas Heat
Heating	Low Gas Heat
Input Heating Capacity	60.00 MBh
Output Heating Capacity	48.00 MBh
Heating EAT	60.00 F
Heating LAT	81.98 F
Heating Temp Rise	21.98 F
Heating Stages	2
Heat Pump	
Heat pump Heating Capacity	55.40 MBh
Heat pump EAT	60.00 F
Heat pump LAT	89.81 F
Heat pump heating ambient temperature	47.00 F
Heat pump heating temperature rise	29.81 F
Heat pump heating ambient relative humid	70.00 %
AHRI COP @ 47 F	3.80
AHRI COP @ 17 F	2.46
AHRI COP2 @ 47 F	3.74
AHRI COP2 @ 17 F	2.46
HSPF	8.50
HSPF2	7.20

Fan Section

Indoor Fan Data		Indoor Fan Performance	
Airflow Application	Horizontal	Airflow	2000 cfm
Design ESP	0.900 in H2O	Supply Motor Horsepower	3.000 hp
Component SP	0.201 in H2O	Total Supply Motor Operating Power	0.730 hp
Heat SP	-0.071 in H2O	Indoor RPM	1039 rpm
Total SP	1.031 in H2O	Outdoor Fan Data	
Indoor Fan Drive Type	Direct	Outdoor Fan Drive Type	Direct
Indoor Fan Quantity	1	Outdoor Fan Quantity	1
Indoor Fan Type	BC Plenum	Outdoor Fan Type	Propeller
		Filters	
		1st Filter Size and Qty	4 - 20 x 20 x 2

Field Installed Accessories

Enthalpy kit	Reference enthalpy kit
Fresh air selection	Low Leak Economizer, Dry Bulb, Horiz
CO2 sensor kit	CO2 wall mounted
Discharge air sensing tube	yes

Acoustics

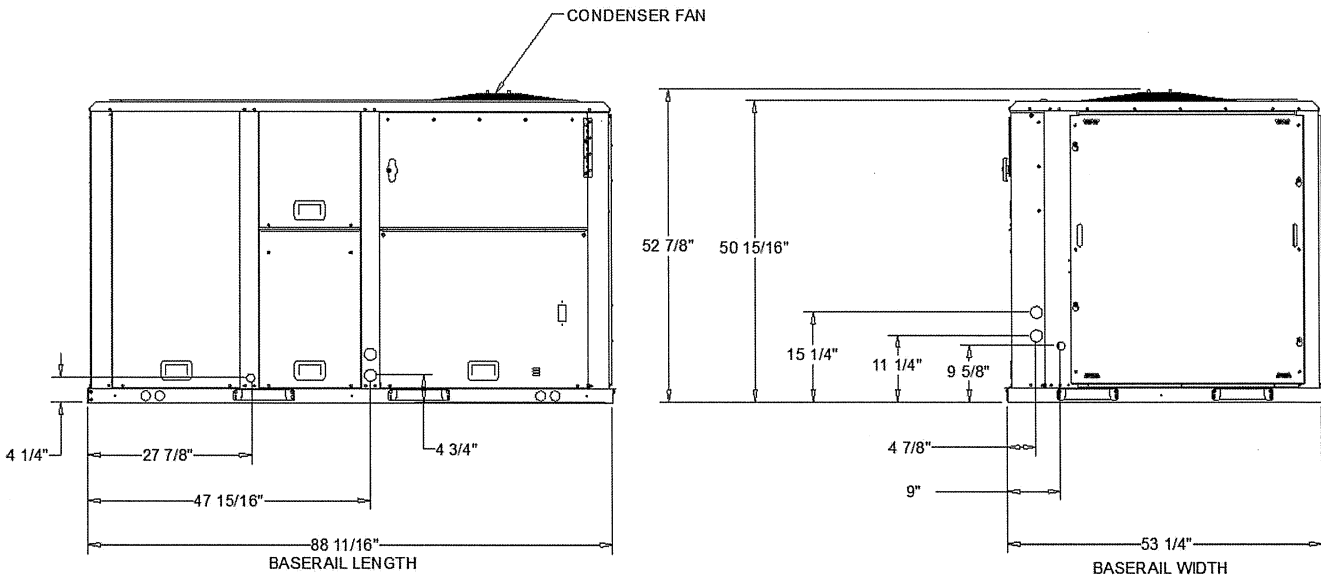
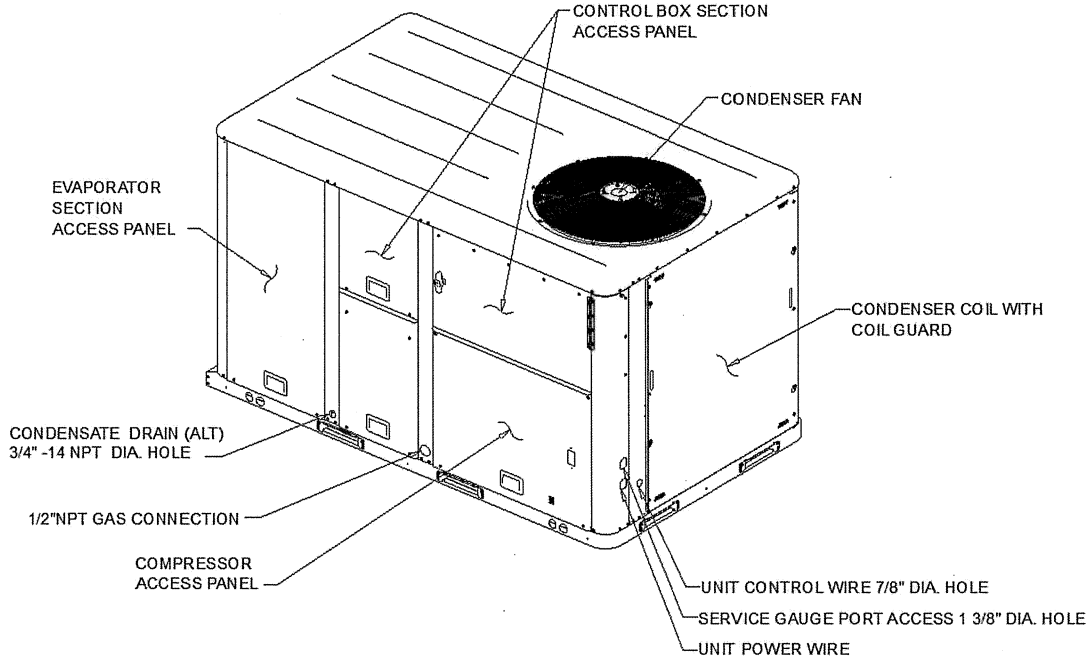
Sound Path	63 Hz	125 Hz	250 Hz	500 Hz	1 kHz	2 kHz	4 kHz	8 kHz
Ducted Discharge	80 dB	75 dB	71 dB	67 dB	61 dB	59 dB	58 dB	58 dB
Ducted Inlet	76 dB	67 dB	65 dB	54 dB	51 dB	49 dB	48 dB	48 dB
Outdoor Noise	85 dB	86 dB	86 dB	85 dB	83 dB	78 dB	73 dB	68 dB

Note: Ducted Discharge/Ducted Inlet prediction data conform to AHRI 260



Job Name: Alpine Fire Station 17 RTU Replacement
 Prepared For:
 Unit Tag: AC-2
 Quantity: 1

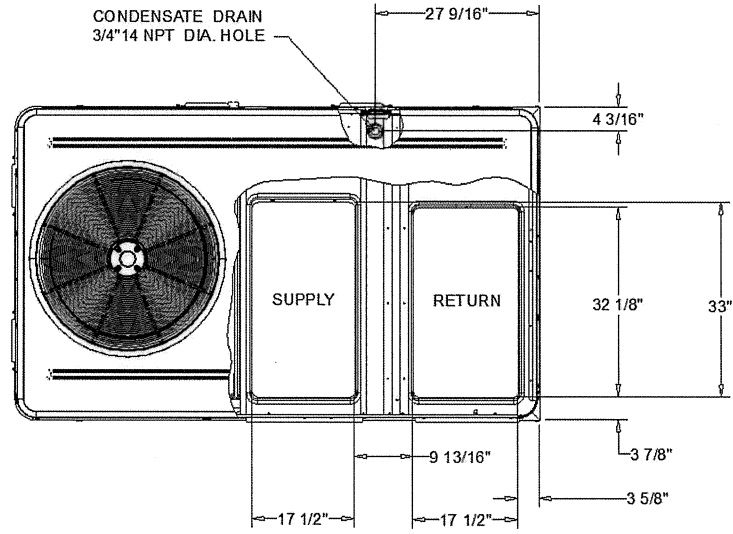
NOTES:
 1. VERIFY WEIGHTS, CONNECTIONS, AND ALL DIMENSIONS WITH
 INSTALLER DOCUMENTS BEFORE INSTALLATION



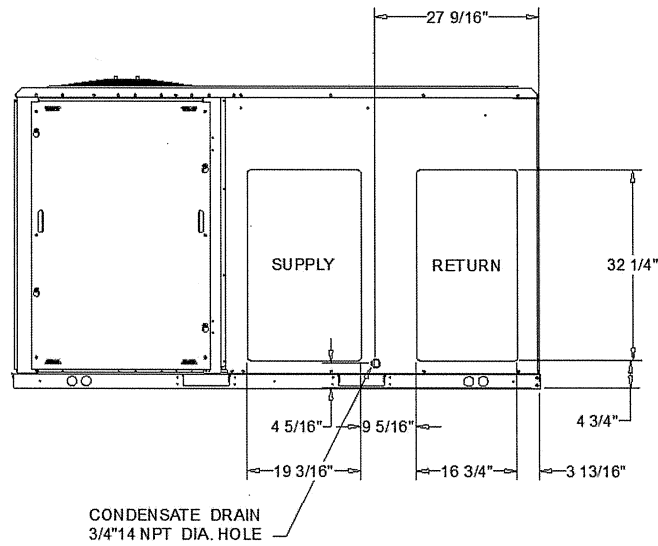
HEAT PUMP / HYBRID HEAT HIGH EFFICIENCY
 DIMENSION DRAWING



Job Name: Alpine Fire Station 17 RTU Replacement
Prepared For:
Unit Tag: AC-2
Quantity: 1



PLAN VIEW OF DOWNFLOW OPENINGS



HORIZONTAL AIR FLOW OPENING

DIMENSION DRAWING



Job Name: Alpine Fire Station 17 RTU Replacement
 Prepared For:
 Unit Tag: AC-2
 Quantity: 1

- NOTES:
 1. APPROX. INSTALLED WEIGHT INCLUDES ALL SELECTED OPTIONS AND ACCESSORIES.
 2. CORNER WEIGHTS ARE FOR BASE UNIT ONLY AND DO NOT INCLUDE OPTIONS OR ACCESSORIES.
 3. WEIGHT INCLUDES BOTH FACTORY AND FIELD INSTALLED ACCESSORY.

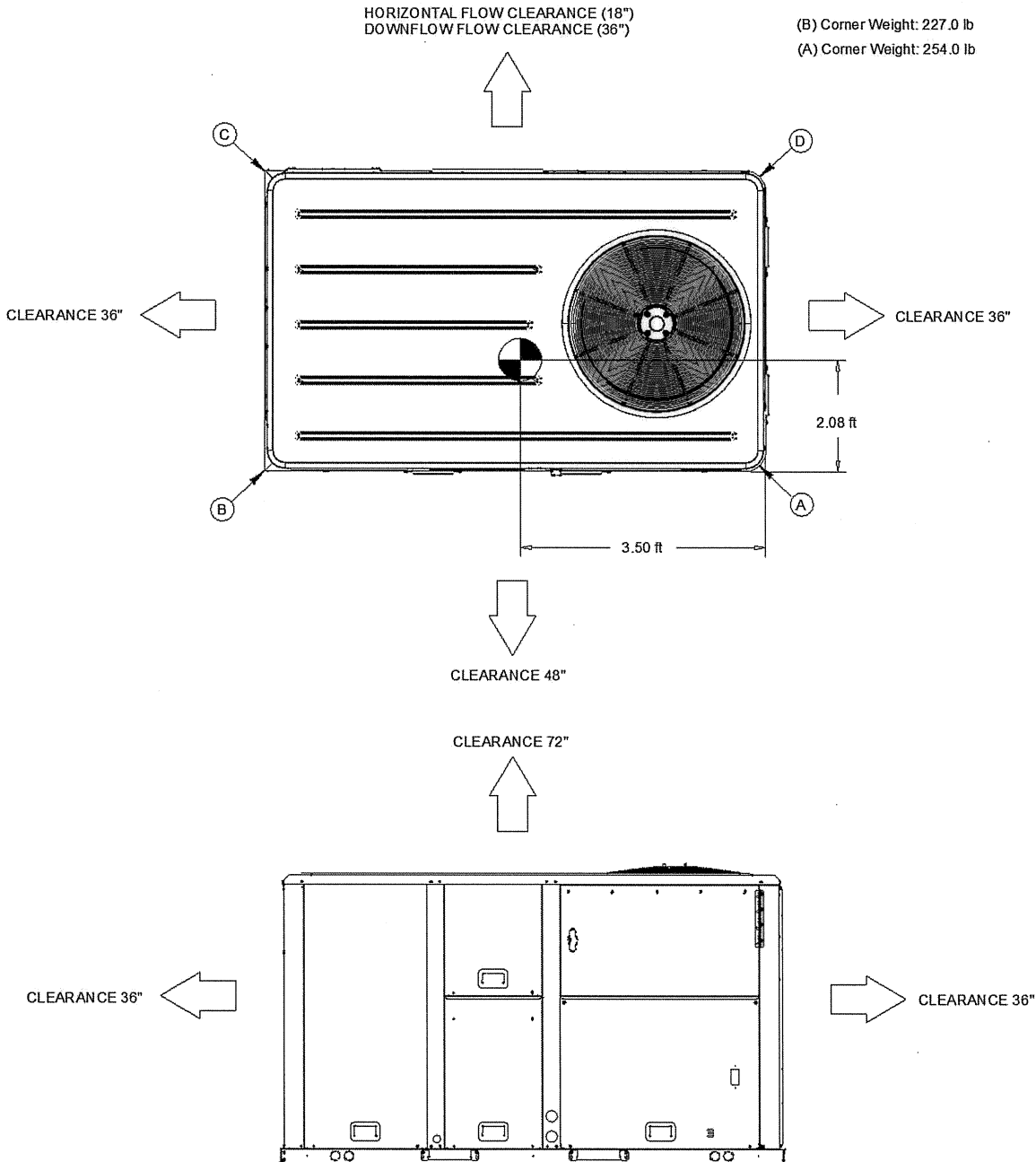
Approximate Installed Weight: 1,147.0 lb

(B) Corner Weight: 227.0 lb

(C) Corner Weight: 203.0 lb

(A) Corner Weight: 254.0 lb

(D) Corner Weight: 227.0 lb

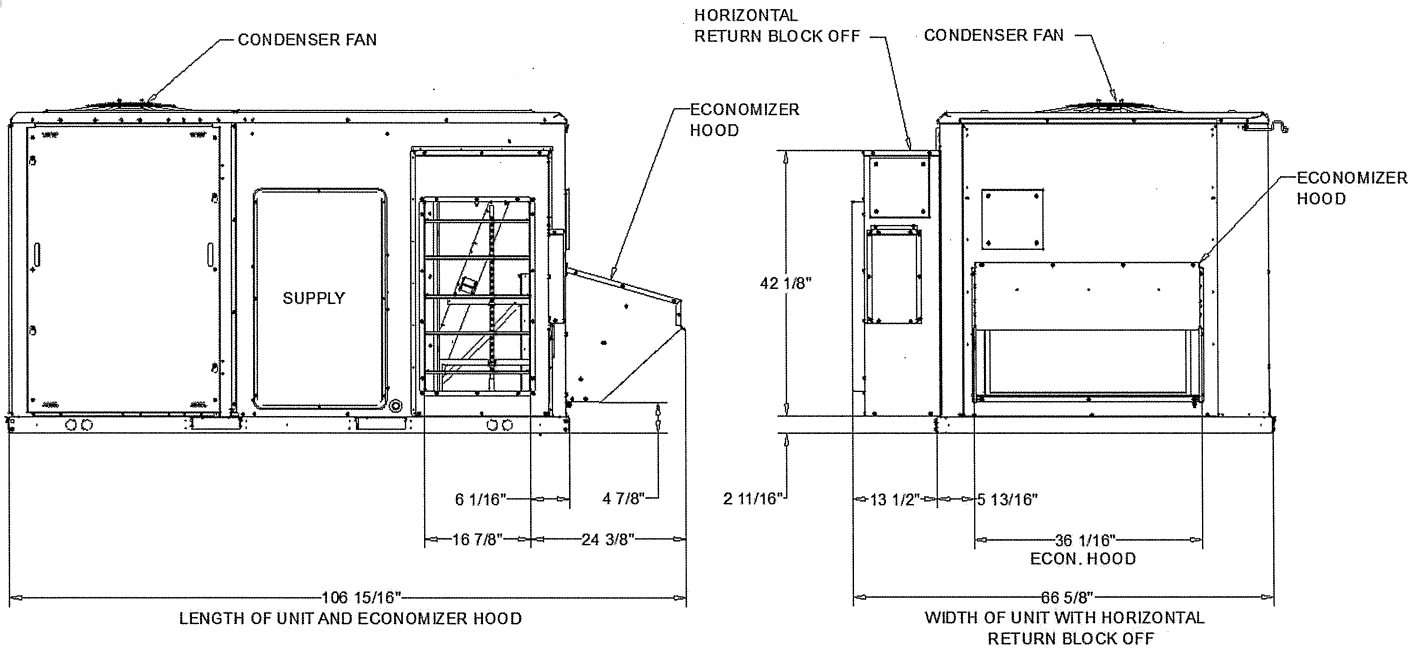
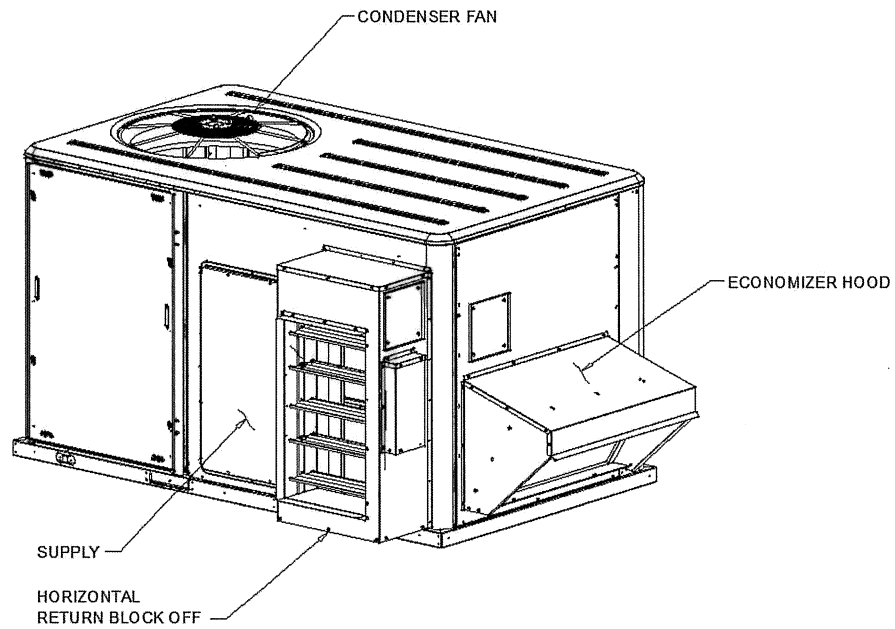


HEAT PUMP / HYBRID HEAT HIGH EFFICIENCY

WEIGHTS AND CLEARANCES



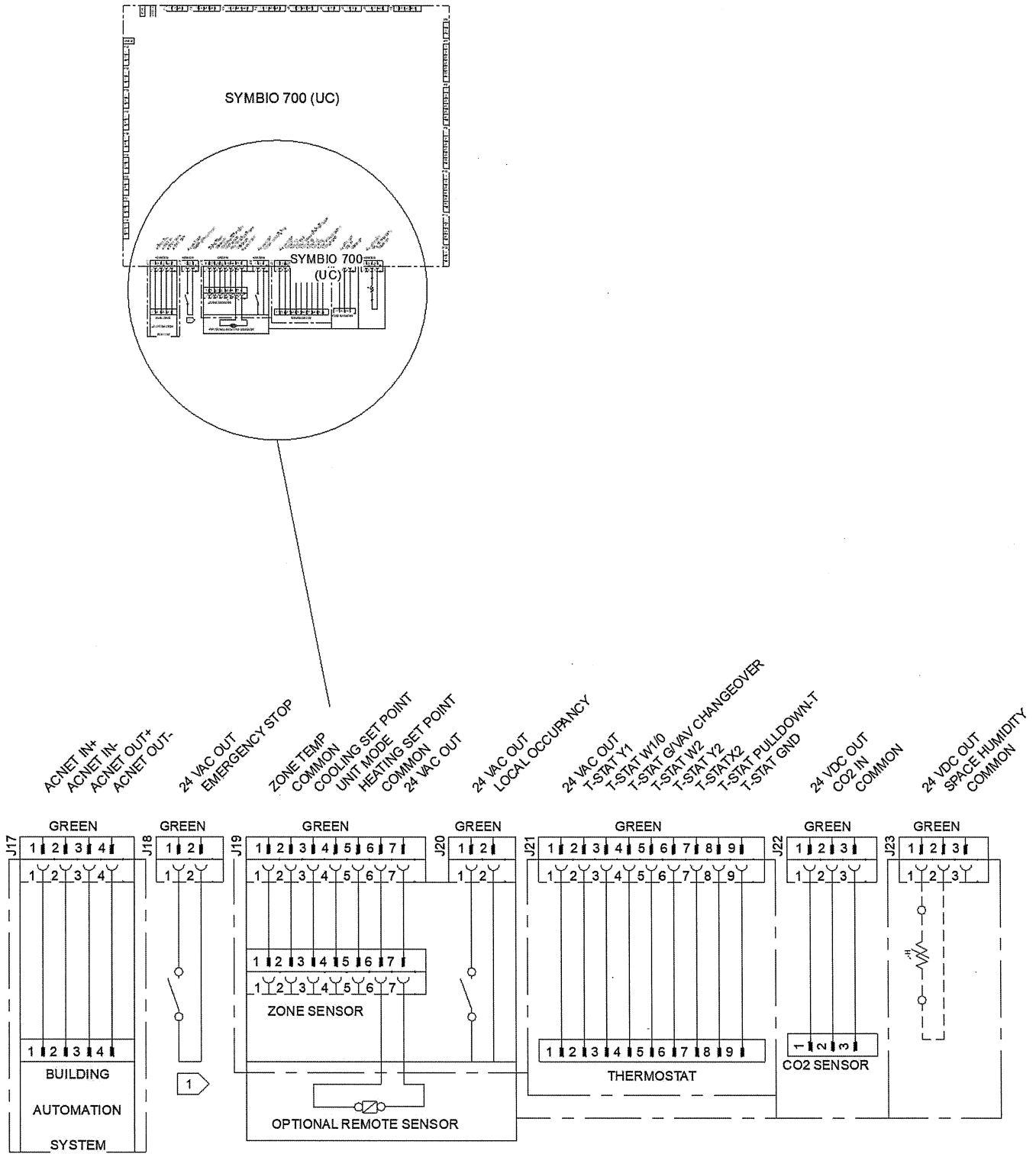
Job Name: Alpine Fire Station 17 RTU Replacement
Prepared For:
Unit Tag: AC-2
Quantity: 1



LOW LEAK ECONOMIZER AIR DAMPER (FIELD ACCESSORY)
HEAT PUMP / HYBRID HEAT HIGH EFFICIENCY



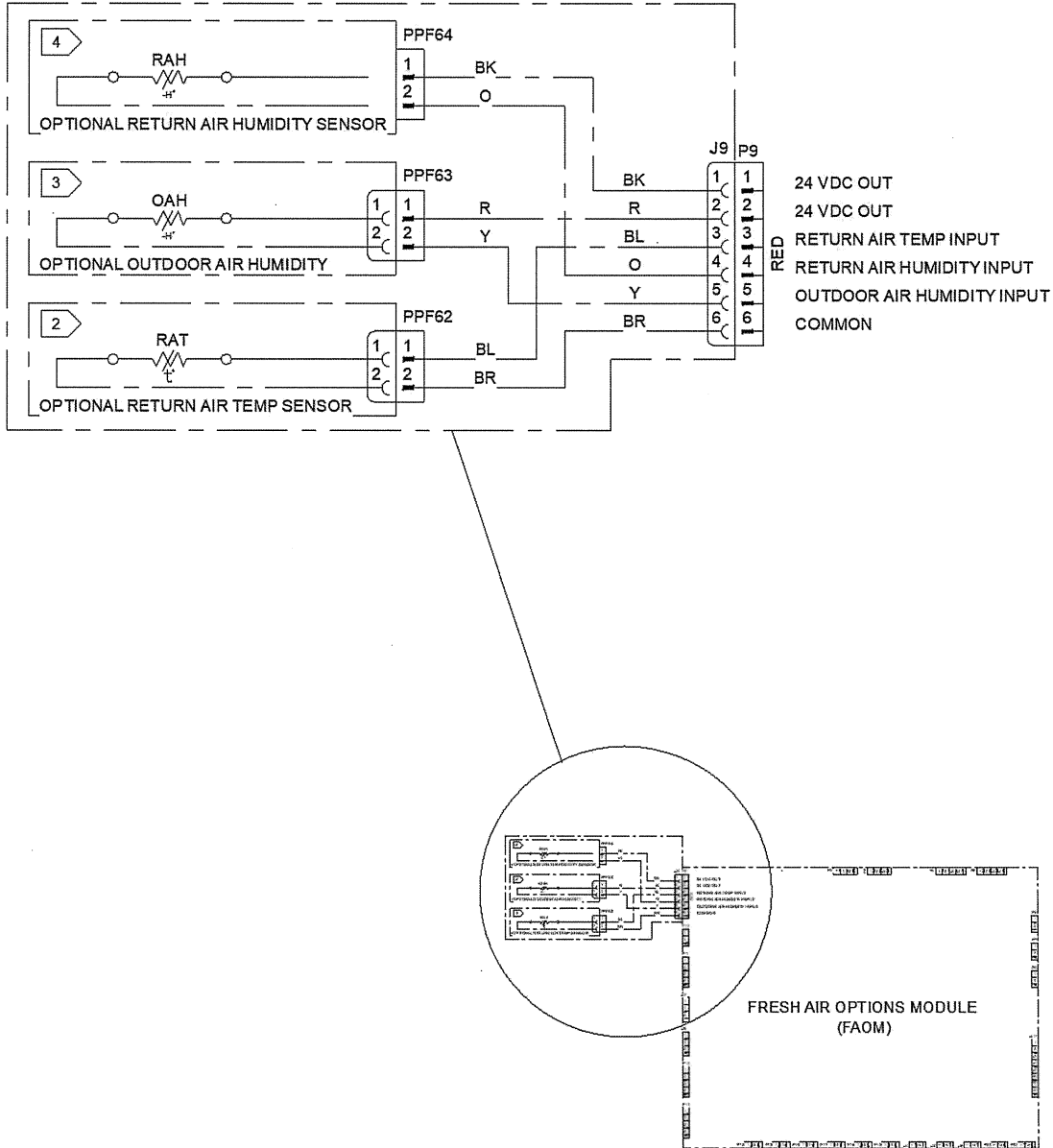
NOTES:
 1. VERIFY WEIGHT, CONNECTION, AND ALL DIMENSION WITH
 INSTALLER DOCUMENTS BEFORE INSTALLATION



SYMBIO 700 (J17, J18, J19, J20, J21, J22, AND J23)
 FIELD WIRING DRAWING

NOTES:

1. VERIFY WEIGHT, CONNECTION, AND ALL DIMENSION WITH INSTALLER DOCUMENTS BEFORE INSTALLATION



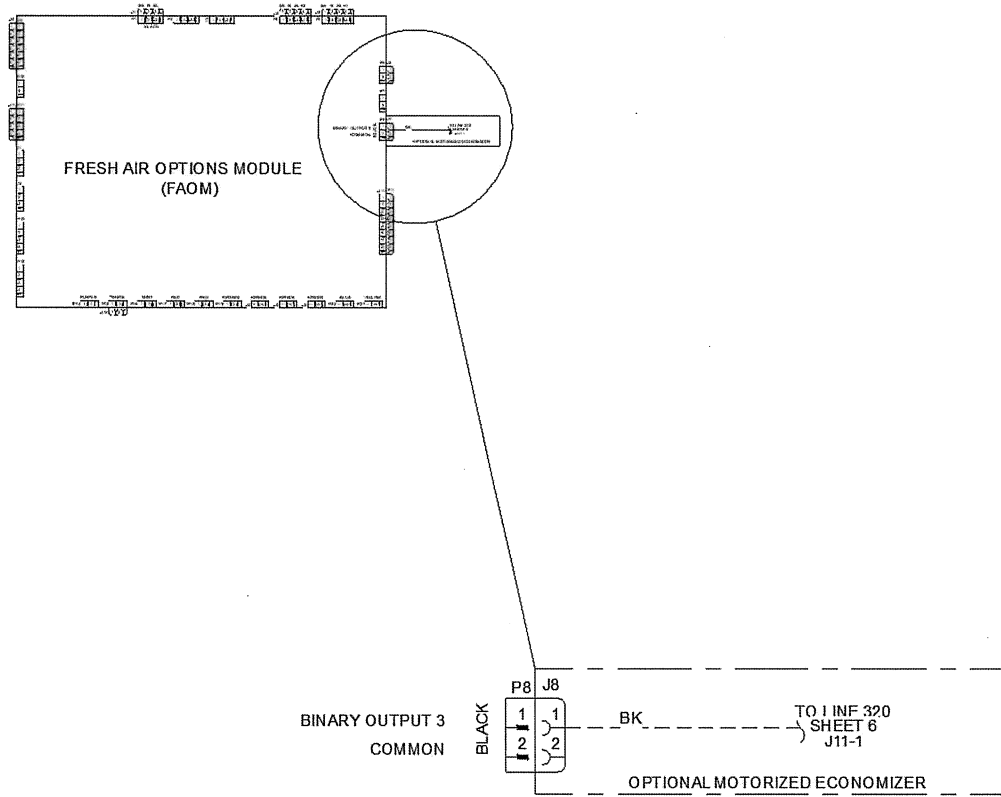
OPTIONAL RETURN AIR HUMIDITY SENSOR, OUTDOOR AIR & RETURN AIR TEMP SENSOR (J9)
 FIELD WIRING DRAWING (FRESH AIR OPTIONS MODULE)



Job Name: Alpine Fire Station 17 RTU Replacement
Prepared For:
Unit Tag: AC-2
Quantity: 1

NOTES:

- 1. VERIFY WEIGHT, CONNECTION, AND ALL DIMENSION WITH INSTALLER DOCUMENTS BEFORE INSTALLATION

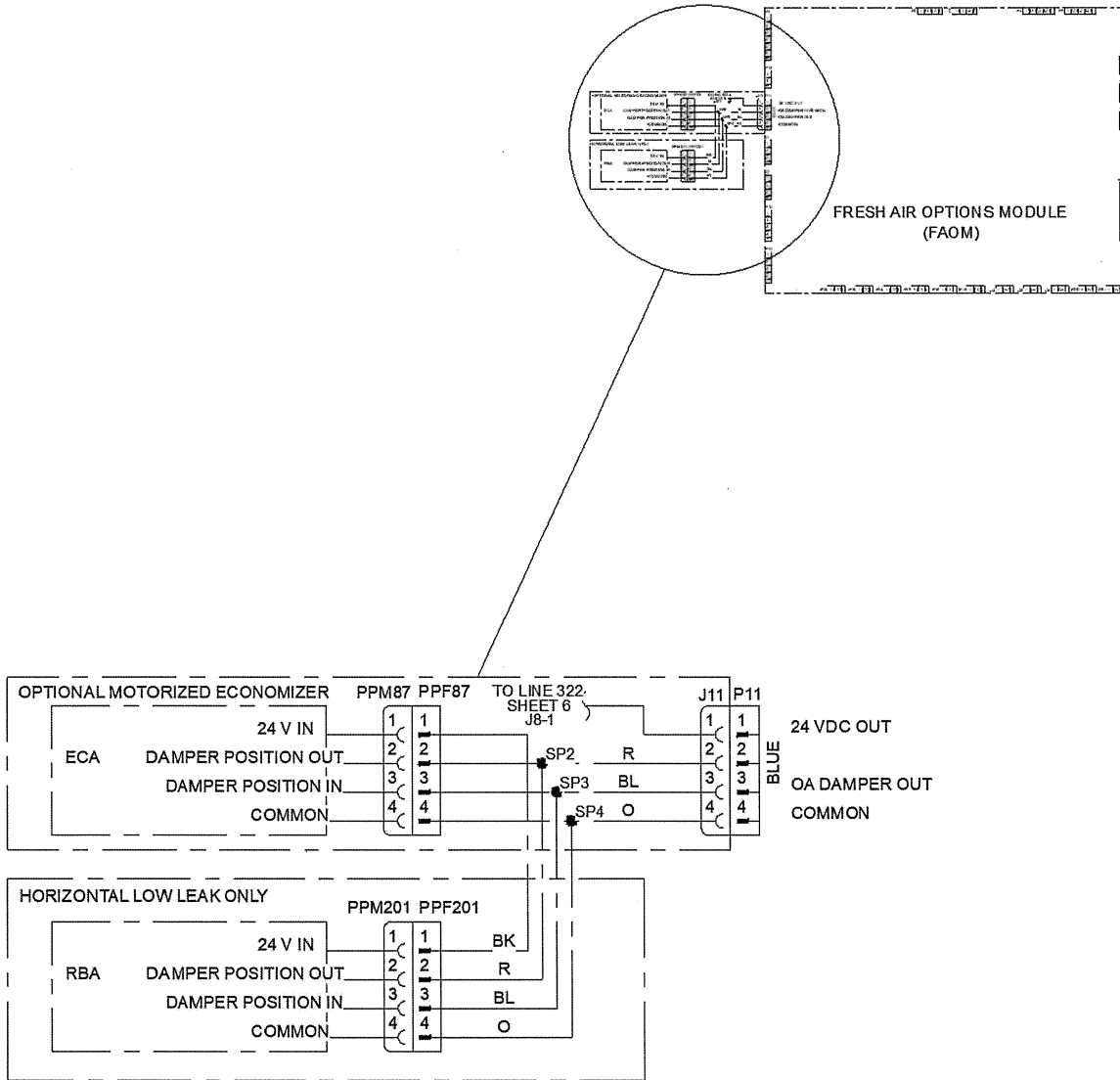


OPTIONAL MOTORIZED ECONOMIZER (J8)
FIELD WIRING DRAWING (INDOOR OPTION MODULE)



Job Name: Alpine Fire Station 17 RTU Replacement
Prepared For:
Unit Tag: AC-2
Quantity: 1

NOTES:
1. VERIFY WEIGHT, CONNECTION, AND ALL DIMENSION WITH
INSTALLER DOCUMENTS BEFORE INSTALLATION



OPTIONAL MOTORIZED ECONOMIZER WITH HORIZONTAL LOW LEAK ONLY (J11)
FIELD WIRING DRAWING (FRESH AIR OPTIONS MODULE)



Heat Exchanger

- Compact cabinet features a tubular heat exchanger in low, medium and high heat capacities.
- Corrosion-resistant aluminized steel tubes and burners are standard on all models.
- Induced draft blower to pull the gas mixture through the burner tubes.
- Direct spark ignition and a flame sensor as a safety device to validate the flame.

Heatpump / Hybrid Heat - General

- Packaged rooftop units cooling, heating capacities, and efficiencies are AHRI Certified within scope of AHRI Standard 210-240 for 12.5 to 25 Tons and ANSIZ21.47 and 10 CFR Part 431 pertaining to
Commercial Warm Air Furnaces (all gas heating units).
- Convertible airflow.
- Symbio controls operating range between 40.0 F and 125.0 F in cooling mode standard from the factory. Factory or field-installed low ambient kit extended operating range down to 0°F.
- Factory assembled, internally wired, fully charged with R-454B, and 100 percent run tested to check cooling operation, fan and blower rotation, and control sequence before leaving the factory.
- Colored and numbered wiring internal to the unit for simplified identification.
- Units cULus listed and labeled, classified in accordance for Central Cooling Air Conditioners.
- Unit shall be furnished with a leak detection system from the factory. The leak detection system shall consist of one or more refrigerant detection sensors. When the system detects a leak, the unit controller shall initiate mitigation actions.

Heatpump / Hybrid Heat - Casing

- Zinc coated, heavy gauge, galvanized steel.
- Weather resistant pre-painted metal with galvanized substrate.
- Meets ASTM B117, 672 hour salt spray test.
- Removable single side maintenance access panels.
- Lifting handles in maintenance access panels (can be removed and reinstalled by removing fasteners while providing a water and air tight seal).
- Exposed vertical panels and top covers in the indoor air section insulated with a cleanable foil-faced, fire-retardant permanent, odorless glass fiber material.
- Base pan shall have no penetrations within the perimeter of the curb other than the raised 1 inch high downflow supply/return openings to provide an added water integrity precaution, if the condensate drain backs up.
- Base of the unit insulated with 1/8 inch, foil-faced, closed-cell insulation.
- Unit base provisions for forklift and/or crane lifting on three sides of unit.

Heatpump / Hybrid Heat - Coils Evaporator and Condenser

- Internally finned, 5/16" copper tubes mechanically bonded to a configured aluminum plate fin are standard.
- Coils are leak tested at the factory to ensure integrity.
- Evaporator coil and condenser coil are leak tested to 600 psig.
- Assembled unit is leak tested to 465 psig.
- Condenser coil is patent pending 1+1+1 hybrid coil, designed with slight gaps for cleaning ease.
- Composite, dual-sloped, removable condensate drain pan is standard.

Heatpump / Hybrid Heat - Compressors

- All units have direct-drive, hermetic, scroll type compressors with centrifugal type oil pumps.
- Suction gas-cooled motor with voltage utilization range of plus or minus 10 percent of unit nameplate voltage.
- Internal overloads standard with scroll compressors.
- Crankcase heaters are standard on all compressors.
- All units have dual compressors.
- Three stages of cooling available on 12.5 to 17.5 tons units and four stages of cooling available on 20 and 25 tons units.



Heatpump / Hybrid Heat Gas Heating Section

- The heating section shall have a progressive tubular heat exchanger with corrosion-resistant aluminized steel tubes and burners as standard on all models.
- Stainless steel heat exchanger with 409 stainless steel tubes and 439 stainless steel burners shall be optional.
- Induced draft combustion blower shall be used to pull the combustion products through the firing tubes.
- Heater shall use a direct spark ignition (DSI) system.
- On initial call for heat, the combustion blower shall purge the heat exchanger for 20 seconds before ignition.
- After three unsuccessful ignition attempts, entire heating system shall be locked out until manually reset at the thermostat/zone sensor.
- Units shall be suitable for use with natural gas or propane (field-installed kit).

Heatpump / Hybrid Heat - Indoor Fan

- Direct drive plenum fan design - 12.5 to 25 tons units.
- Plenum fan design- backward-curved fan wheel along with an external rotor direct drive variable speed indoor motor.
- Supply fan speed adjustments can be made using the Symbio 700 or Mobile App.
- Motors are thermally protected.
- Variable speed direct drive motors are high efficiency - 12.5 to 25 tons.

Heatpump / Hybrid Heat - Heat Exchanger

- Compact cabinet features a tubular heat exchanger in low, medium and high heat capacities.
- Corrosion-resistant aluminized steel tubes and burners are standard on all models.
- Induced draft blower to pull the gas mixture through the burner tubes.
- Direct spark ignition and a flame sensor as a safety device to validate the flame.

Heatpump / Hybrid Heat - Filters

- Standard throwaway filters
- Optional 2 inch MERV 8 and MERV 13 filters

Heatpump / Hybrid Heat - Froststat

- Utilized as a safety device.
- Opens to prevent freezing temperatures on evaporator coil.
- Temperature will need to rise to 50.0 F before closing.
- Utilized in low airflow or high outside air applications (cooling only).

Heatpump / Hybrid Heat - Coil Guards

- Provides condenser coil protection.

Ultra Low NOx Gas Furnace (CA Only)

Gas heat models that provide 14 ng/J NOx furnace emissions to comply with California's South Coast Air Quality Management District (SCAQMD) and San Joaquin Valley Air Pollution Control District (SJVAPCD) requirements.

Field Heatpump / Hybrid Heat - Low Leak Economizer

- This accessory meets the low leak requirements for ASHRAE 90.1, IECC, and CA Title 24 standards (4 cfm/ ft²@1" wg exterior air/return air). This option allows for 100% outdoor air supply from 0% to 100% modulating dampers and comes standard with barometric relief. It can be paired with powered exhaust for additional building pressure relief. This option can be paired with or without fault detection and diagnostics (FDD) to meet the current mandatory CA Title 24 requirements. The economizers come with four control options: dry bulb, reference enthalpy, comparative enthalpy, or differential dry bulb.



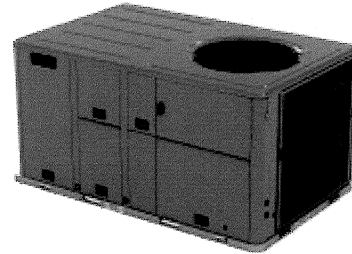
Trane Precedent Packaged Rooftop

Unit Overview - YHK090A3S0L**00D0000100B5000000000000000

Application	Unit Size	Supply Fan		External Dimensions (in.)			Operating Weight	Elevation
		Airflow	Total Static Pressure	Height	Width	Length		
DX Cooling / Gas Heat	7.5 Ton	3000 cfm	1.714 in H2O	4.24 ft	4.44 ft	7.34 ft	1209.0 lb	0.00 ft

Unit Features

Unit Efficiency	High Efficiency
Refrigerant	R-454B Refrigerant
EER @ AHRI	12.10
IEER @ AHRI	17.20
Hinged Service Access/Filters	Standard Access Panels with 2-in MERV 13



Unit Electrical

Voltage	208-230/60/3
MCA	43.00 A
MOP	50.00 A
Condenser Fan FLA	3.30 A
Evaporator Fan FLA	8.80 A
Compressor 1 RLA	16.50 A
Compressor 2 RLA	9.90 A
Compressor Power	5.95 kW
System Power	8.13 kW

Controls

Unit Controls	Symbio 700
Communications Option	Advanced Controls and BACnet BAS
System Monitoring Controls 1	Clogged Filter & Discharge Air
SupplyFan/Drive/MotorType	Multi-speed Motor
Smoke Detector	Supply Air

Cooling Section

		Capacity
Entering Dry Bulb	80.00 F	Gross Total 93.62 MBh
Entering Wet Bulb	67.00 F	
Ambient Temp	95.00 F	Gross Latent 20.63 MBh
Leaving Coil Dry Bulb	57.24 F	Gross Sensible 73.00 MBh
Leaving Coil Wet Bulb	56.78 F	Net Total 89.73 MBh
Leaving Unit Dry Bulb	59.03 F	Net Sensible 69.10 MBh
Leaving Unit Wet Bulb	57.48 F	Net Sensible Heat Ratio 77.00 %
Saturated Discharge Temperature	117.91 F	Fan Motor Heat 2.09 MBh
Saturated Suction Temperature	54.50 F	Refrig Charge-Circuit 1 7.6 lb

Heating Section

Heating	Low Gas Heat
Input Heating Capacity	120.00 MBh
Output Heating Capacity	97.20 MBh
Heating EAT	60.00 F
Heating LAT	89.71 F
Heating Temp Rise	29.71 F
Heating Stages	2



Job Name: Alpine Fire Station 17 RTU Replacement
 Prepared For:
 Unit Tag: AC-3
 Quantity: 1

Fan Section

Indoor Fan Data		Indoor Fan Performance	
Airflow Application	Horizontal	Airflow	3000 cfm
Design ESP	1.000 in H2O	Supply Motor Horsepower	3.000 hp
Component SP	0.382 in H2O	Total Supply Motor Operating Power	1.760 hp
Heat SP	0.332 in H2O	Indoor RPM	1371 rpm
Total SP	1.714 in H2O	Outdoor Fan Data	
Indoor Fan Drive Type	Variable Direct	Outdoor Fan Drive Type	Direct
Indoor Fan Quantity	1	Outdoor Fan Quantity	1
Indoor Fan Type	BC Plenum	Outdoor Fan Type	Propeller
		Filters	
		1st Filter Size and Qty	2 - 18 x 24 x 2
		2nd Filter Size and Qty	3 - 24 x 16 x 2

Field Installed Accessories

Enthalpy kit	Reference enthalpy kit
Fresh air selection	Low Leak Economizer, Dry Bulb, Horiz
CO2 sensor kit	CO2 wall mounted

Acoustics

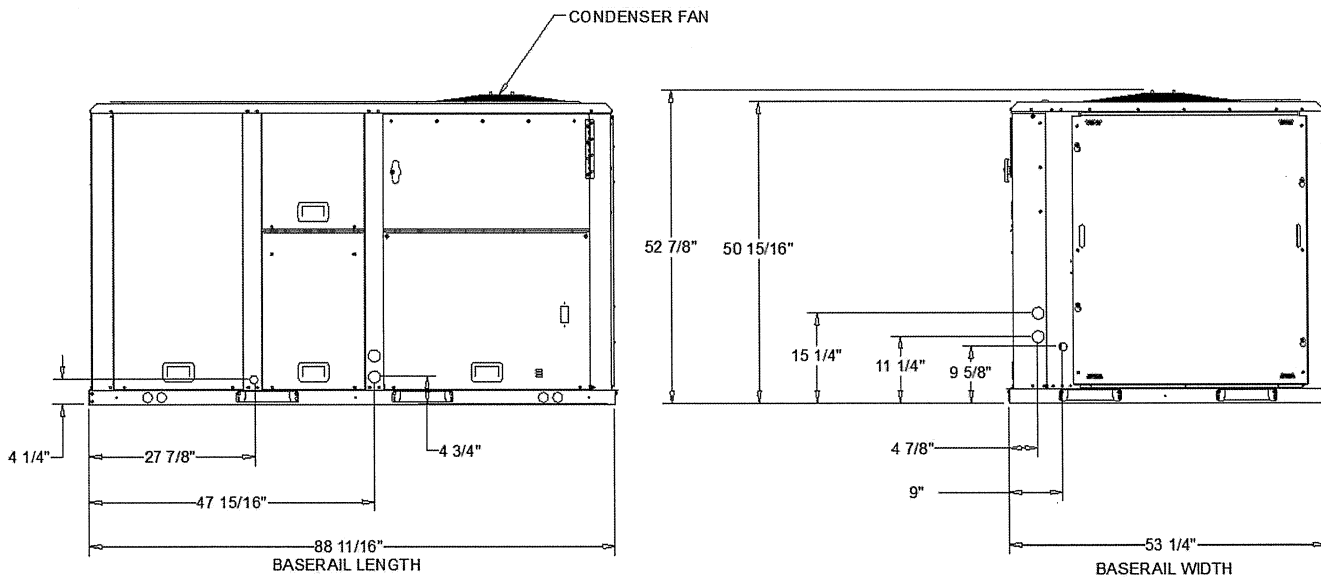
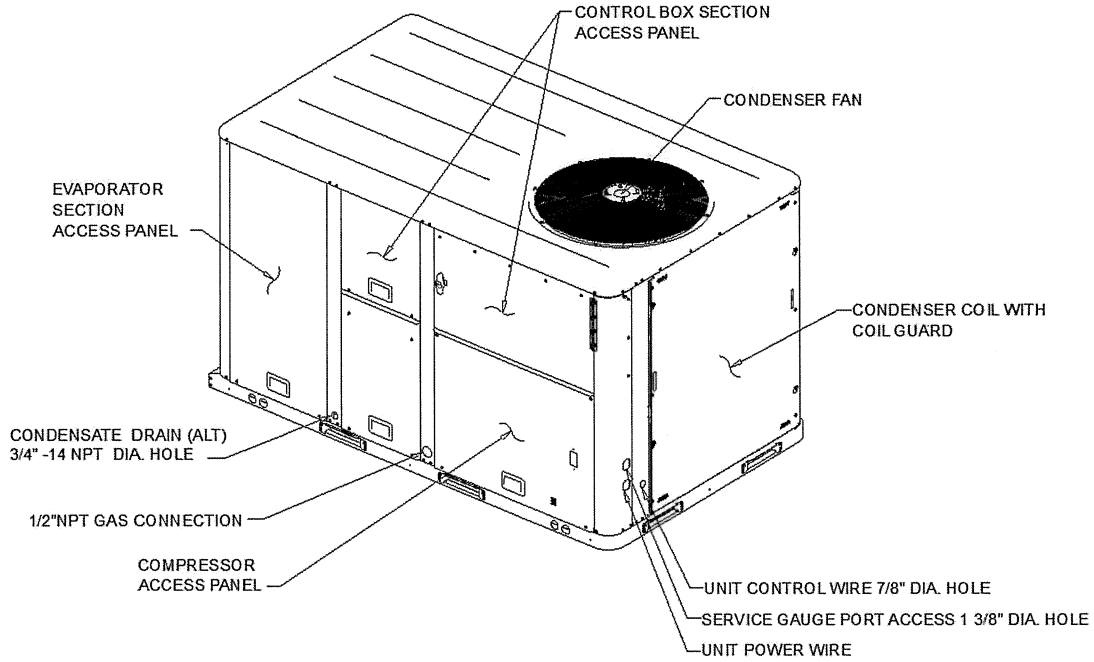
Sound Path	63 Hz	125 Hz	250 Hz	500 Hz	1 kHz	2 kHz	4 kHz	8 kHz
Ducted Discharge	80 dB	90 dB	78 dB	75 dB	70 dB	66 dB	66 dB	67 dB
Ducted Inlet	76 dB	76 dB	73 dB	61 dB	59 dB	56 dB	57 dB	57 dB
Outdoor Noise	84 dB	86 dB	84 dB	85 dB	82 dB	77 dB	73 dB	67 dB

Note: Ducted Discharge/Ducted Inlet prediction data conform to AHRI 260



Job Name: Alpine Fire Station 17 RTU Replacement
 Prepared For:
 Unit Tag: AC-3
 Quantity: 1

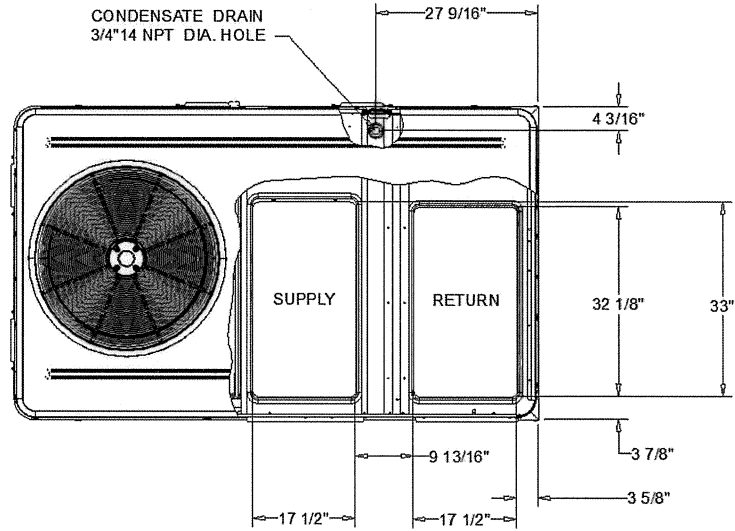
NOTES:
 1. VERIFY WEIGHTS, CONNECTIONS, AND ALL DIMENSIONS WITH
 INSTALLER DOCUMENTS BEFORE INSTALLATION



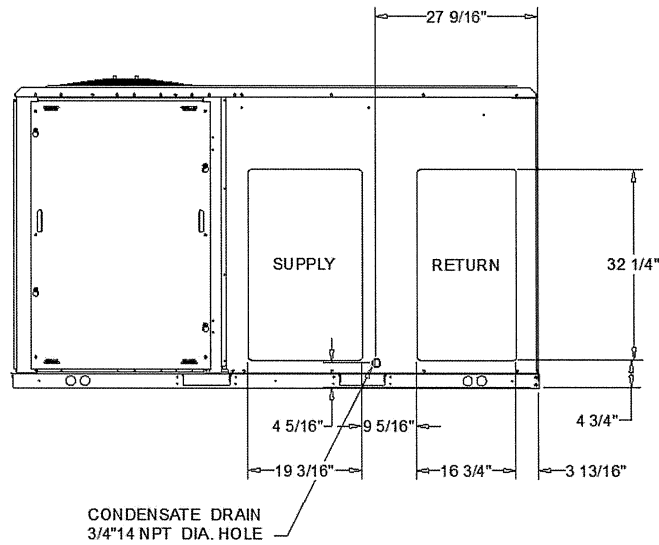
DX COOLING / GAS HEAT HIGH EFFICIENCY
 DIMENSION DRAWING



Job Name: Alpine Fire Station 17 RTU Replacement
Prepared For:
Unit Tag: AC-3
Quantity: 1



PLAN VIEW OF DOWNFLOW OPENINGS



HORIZONTAL AIR FLOW OPENING

DX COOLING / GAS HEAT HIGH EFFICIENCY

DIMENSION DRAWING



Job Name: Alpine Fire Station 17 RTU Replacement
Prepared For:
Unit Tag: AC-3
Quantity: 1

NOTES:

- 1. APPROX. INSTALLED WEIGHT INCLUDES ALL SELECTED OPTIONS AND ACCESSORIES.
- 2. CORNER WEIGHTS ARE FOR BASE UNIT ONLY AND DO NOT INCLUDE OPTIONS OR ACCESSORIES.
- 3. WEIGHT INCLUDES BOTH FACTORY AND FIELD INSTALLED ACCESSORY.

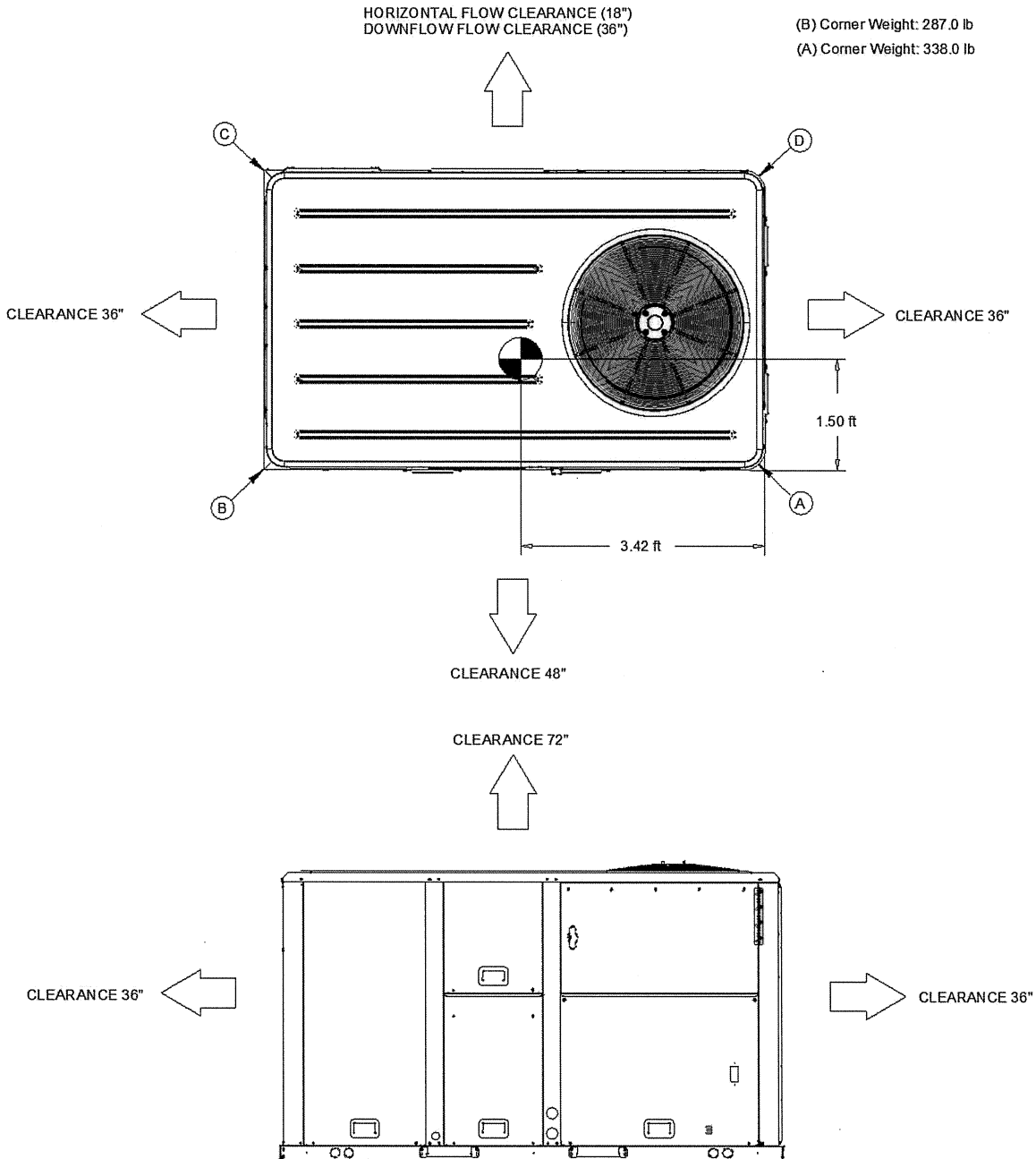
Approximate Installed Weight: 1,209.0 lb

(B) Corner Weight: 287.0 lb

(C) Corner Weight: 158.0 lb

(A) Corner Weight: 338.0 lb

(D) Corner Weight: 183.0 lb

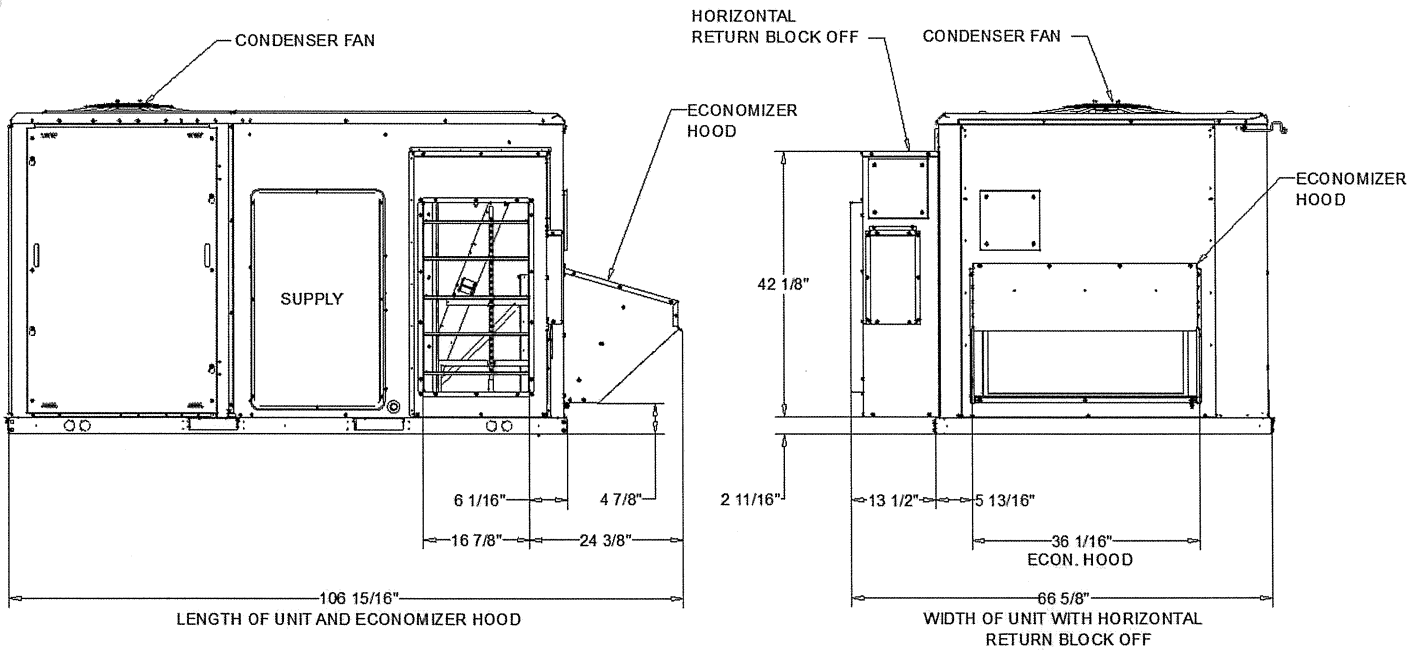
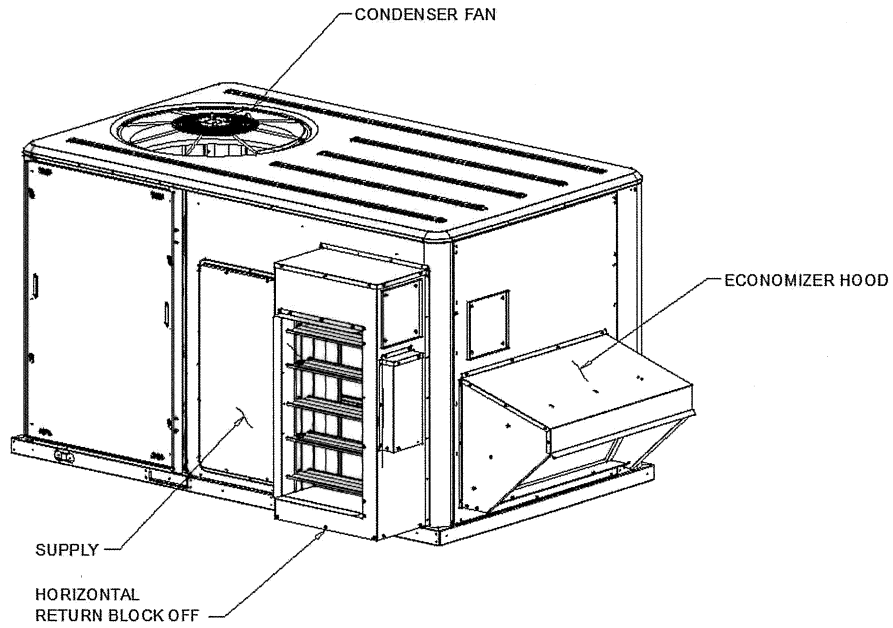


DX COOLING / GAS HEAT HIGH EFFICIENCY

WEIGHTS AND CLEARANCES



Job Name: Alpine Fire Station 17 RTU Replacement
Prepared For:
Unit Tag: AC-3
Quantity: 1



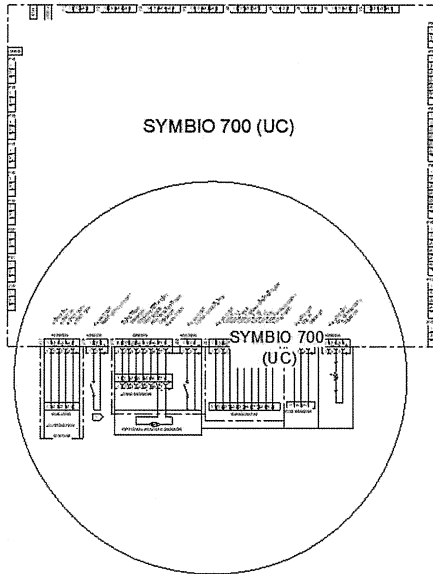
LOW LEAK ECONOMIZER AIR DAMPER (FIELD ACCESSORY)

DX COOLING / GAS HEAT HIGH EFFICIENCY

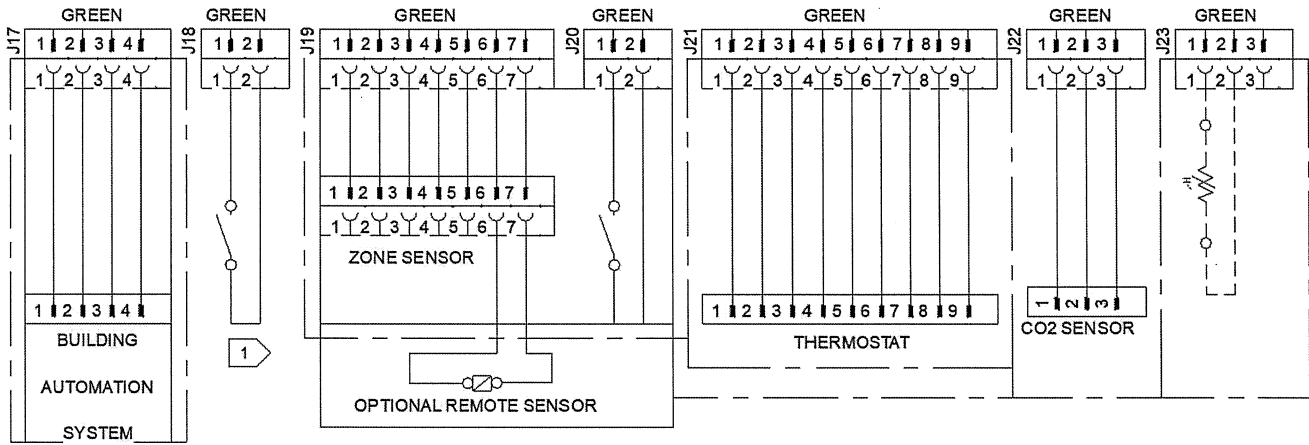


Job Name: Alpine Fire Station 17 RTU Replacement
 Prepared For:
 Unit Tag: AC-3
 Quantity: 1

NOTES:
 1. VERIFY WEIGHT, CONNECTION, AND ALL DIMENSION WITH
 INSTALLER DOCUMENTS BEFORE INSTALLATION



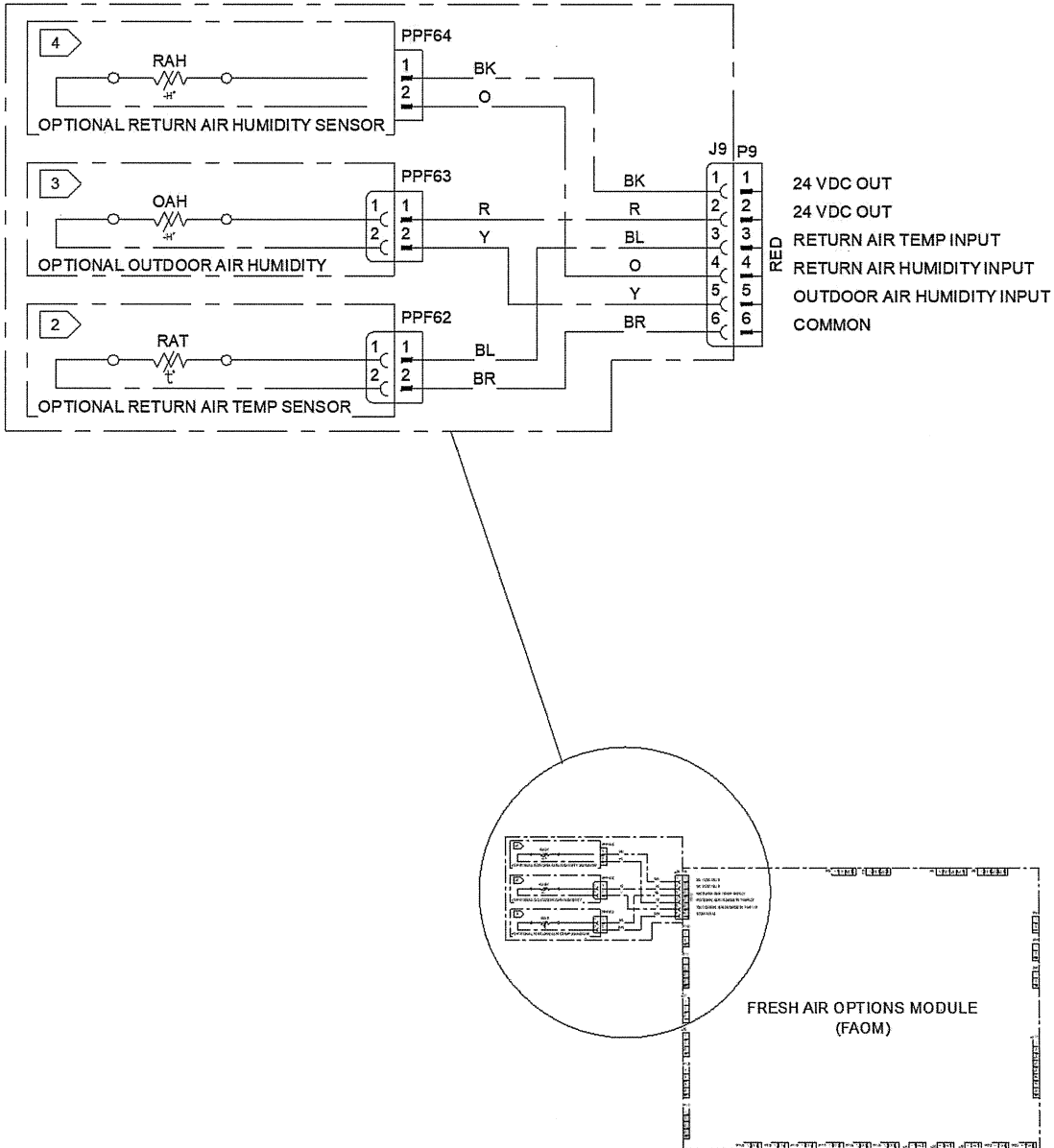
ACNET IN+
 ACNET IN-
 ACNET OUT+
 ACNET OUT-
 24 VAC OUT
 EMERGENCY STOP
 ZONE TEMP
 COMMON
 COOLING SET POINT
 UNIT MODE
 HEATING SET POINT
 COMMON
 24 VAC OUT
 LOCAL OCCUPANCY
 24 VAC OUT
 T-STAT Y1
 T-STAT W1/0
 T-STAT W2
 T-STAT Y2
 T-STAT Y2
 T-STAT PULLDOWN-T
 T-STAT GND
 24 VDC OUT
 CO2 IN
 COMMON
 24 VDC OUT
 SPACE HUMIDITY
 COMMON



SYMBIO 700 (J17, J18, J19, J20, J21, J22, AND J23)

FIELD WIRING DRAWING

NOTES:
 1. VERIFY WEIGHT, CONNECTION, AND ALL DIMENSION WITH
 INSTALLER DOCUMENTS BEFORE INSTALLATION



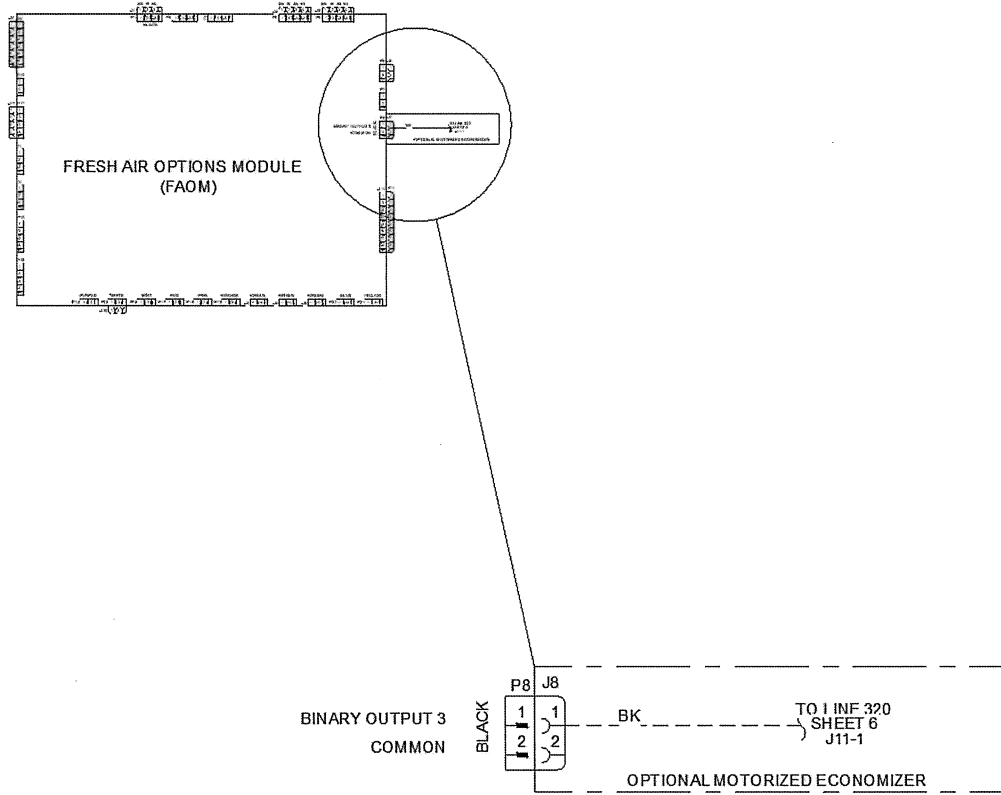
OPTIONAL RETURN AIR HUMIDITY SENSOR, OUTDOOR AIR & RETURN AIR TEMP SENSOR (J9)
 FIELD WIRING DRAWING (FRESH AIR OPTIONS MODULE)



Job Name: Alpine Fire Station 17 RTU Replacement
Prepared For:
Unit Tag: AC-3
Quantity: 1

NOTES:

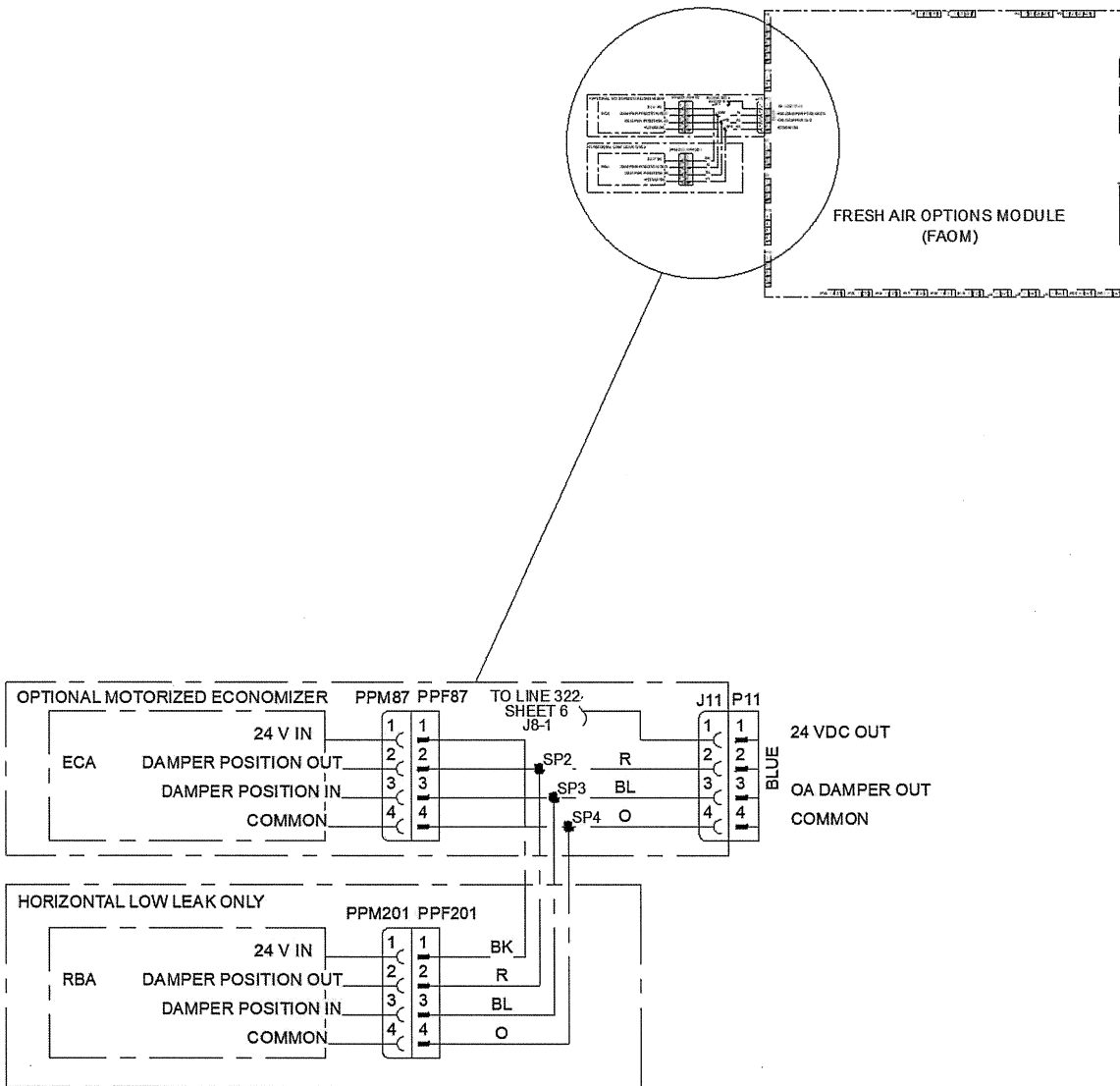
- 1. VERIFY WEIGHT, CONNECTION, AND ALL DIMENSION WITH INSTALLER DOCUMENTS BEFORE INSTALLATION



OPTIONAL MOTORIZED ECONOMIZER (J8)
FIELD WIRING DRAWING (INDOOR OPTION MODULE)



NOTES:
 1. VERIFY WEIGHT, CONNECTION, AND ALL DIMENSION WITH
 INSTALLER DOCUMENTS BEFORE INSTALLATION



OPTIONAL MOTORIZED ECONOMIZER WITH HORIZONTAL LOW LEAK ONLY (J11)
 FIELD WIRING DRAWING (FRESH AIR OPTIONS MODULE)



General

Packaged rooftop unit cooling capacities, heating capacities, and efficiencies are certified to the following standards:

- 3 to 5 ton units: AHRI Standard 210/240.
- 6 to 25 ton units: AHRI Standard 340/360.
- Gas Heating Units: ANSI Z21.47 and 10 CFR Part 431 for Commercial Warm Air.
- Convertible airflow.
- Symbio? controls operating range between 40°F and 125°F in cooling mode standard from the factory. Field-installed low ambient kit extends operating range down to 0°F.
- Factory assembled, internally wired, fully charged, and 100 percent run tested to verify cooling operation, fan and blower rotation, and control sequence.
- Colored and numbered wiring internal to the unit for simplified identification.
- cULus listed and classified in accordance for Central Cooling Air Conditioners.
- Unit shall be furnished with a leak detection system from the factory

Casing

- Zinc coated, heavy gauge, galvanized steel.
- Weather resistant pre-painted metal with galvanized substrate.
- Meets ASTM B117, 672 hour salt spray test.
- Removable single side maintenance access panels.
- Lifting handles in maintenance access panels (can be removed and reinstalled by removing fasteners while providing a water and air tight seal).
- Exposed vertical panels and top covers in the indoor air section insulated with a cleanable foil-faced, fire-retardant permanent, odorless glass fiber material.
- Base pan shall have no penetrations within the perimeter of the curb other than the raised 1 inch high downflow supply/return openings to provide an added water integrity precaution, if the condensate drain backs up.
- Base of the unit insulated with 1/8 inch, foil-faced, closed-cell insulation.
- Unit base provisions for forklift and/or crane lifting on three sides of unit.

Hail Guards

- Provides condenser coil protection.

Microchannel Coils

- Optimal heat transfer performance due to flat, streamlined tubes with small ports, and metallurgical tube-to-fin bond.
- Reduce system refrigerant charge by up to 50% leading to better compressor reliability.
- Compact all-aluminum microchannel coils reduce the unit weight.
- Recyclable all aluminum coils All aluminium construction minimizes galvanic corrosion.
- Strong aluminum brazed structure provides better fin protection.
- Flat streamlined tubes more dust resistant and easy to clean.
- Coils leak tested at the factory to ensure the pressure integrity.

Compressors

- All units have direct-drive, hermetic, scroll type compressors with centrifugal type oil pumps.
- Suction gas-cooled motor with voltage utilization range of plus or minus 10 percent of unit nameplate voltage.
- Internal overloads standard with scroll compressors.
- Three stages of cooling available on 6 to 17.5 tons units and four stages of cooling available on 20 and 25 tons units.

Filters

- Two inch pleated media filters shall be available on all models.

Frostat

- Utilized as a safety device.
- Opens to prevent freezing temperatures on evaporator coil.
- Temperature will need to rise to 50°F before closing.
- Utilized in low airflow or high outside air applications (cooling only).



Gas Heating Section

- The heating section shall have a progressive tubular heat exchanger with corrosion-resistant aluminized steel tubes and burners as standard on all models.
- Stainless steel heat exchanger with 409 stainless steel tubes and 439 stainless steel burners shall be optional.
- Induced draft combustion blower shall be used to pull the combustion products through the firing tubes.
- Heater shall use a direct spark ignition (DSI) system.
- On initial call for heat, the combustion blower shall purge the heat exchanger for 20 seconds before ignition.
- After three unsuccessful ignition attempts, entire heating system shall be locked out until manually reset at the thermostat/zone sensor.
- Units shall be suitable for use with natural gas or propane (field-installed kit).

Indoor Fan

- Direct drive plenum fan design - 6 to 25 tons units.
- Plenum fan design - backward-curved fan wheel along with an external rotor direct drive variable speed indoor motor.
- Supply fan speed adjustments can be made using the Symbio 700 or Mobile App.
- Motors are thermally protected.
- Variable speed direct drive motors are high efficiency - 6 to 25 tons.

Heat Exchanger

- Compact cabinet features a tubular heat exchanger in low, medium and high heat capacities.
- Corrosion-resistant aluminized steel tubes and burners are standard on all models.
- Induced draft blower to pull the gas mixture through the burner tubes.
- Direct spark ignition and a flame sensor as a safety device to validate the flame.

Reference or Comparative Enthalpy

- Reference enthalpy used to measure and communicate outdoor humidity.
- Unit receives and uses information to provide improved comfort cooling while using the economizer.
- Comparative enthalpy measures and communicates humidity for both outdoor and return air conditions, and return air temperature.
- Unit receives and uses information to maximize use of economizer cooling, and to provide maximum occupant comfort control.
- Reference or comparative enthalpy available when a factory or field installed downflow economizer ordered.

Low Leak Economizer

- This accessory meets the low leak requirements for ASHRAE 90.1, IECC, and CA Title 24 standards (4 cfm/ ft²@1" wg exterior air/return air). This option allows for 100% outdoor air supply from 0% to 100% modulating dampers and comes standard with barometric relief. It can be paired with powered exhaust for additional building pressure relief. This option can be paired with or without fault detection and diagnostics (FDD) to meet the current mandatory CA Title 24 requirements. The economizers come with four control options: dry bulb, reference enthalpy, comparative enthalpy, or differential dry bulb.



Proposal

Pacific Southwest

Trane U.S. Inc.
3565 Corporate Court
San Diego, CA 92123
(858) 576-2500

CA State Contractors License # 1066318

10/6/2025

Prepared for:
All Bidders

Job Name:

Alpine Fire Station Removal
& Replacement of (3) HVAC
Units
1634 Tavern Road
Alpine, CA 91901

Proposal Number:

8111424

Payment Terms: Net 30 days

Building Automation System

Trane is pleased to provide the enclosed proposal for your review and approval.

We propose to furnish and install a Trane Tracer Building Automation System as defined below and RFP dated 9/1/25. This proposal is intended to define the scope of work to be incorporated in the Building Automation System, as well as to define the work which is to be excluded and provided by other trades or contractors.

Scope:

The design of this system will provide communication and control capabilities for the following:

I. Project Scope

- Network Architecture
 - Remove existing Trane Tracker Panel
 - Furnish & Install New Trane SC+ Controller with Touchscreen in Room 114
 - Integrate the following Existing Systems
 - (21) Zones
 - Provide (4) Hours of Training
- Rooftop Units (typical of 3)
 - Remove existing Communication Cable Prior to Units being removed. Tie thru existing Communication
 - Furnish & Install New BACnet MSTP Wiring to Factory BACnet Card
- Existing Bypass Dampers (typical of 3)
 - Remove existing DDC Controller, tie thru existing Communication & Reuse Existing Power
 - Furnish & Install New BACnet DDC
 - DDC Controller



TRANE

TRANE
TECHNOLOGIES

I. General Inclusions

- a. Project engineering, management, and technical labor to commission the system is included.
- b. Wiring diagrams with termination information for all connected equipment.
- c. Applicable Sales and/or Use Taxes are included, no tax on labor.
- d. One-year parts and labor warranty is included.
- e. All work is to be done during normal working hours.

II. Clarifications

- a. Electrical installation of low voltage wiring (and required conduit) as specified above is provided in this proposal. High voltage power must be provided to units and to control panels by others, and terminated on high voltage end of the transformer. Unless otherwise specified, any low-voltage electrical work by Trane shall be 24V and under.
- b. Open-run Plenum-rated cable (no conduit) will be installed in concealed and accessible areas (above ceilings etc.). Any required conduit shall be EMT.
- c. Proposal is based on utilizing prevailing wage labor.
- d. Installation will require a temporary VPN or similar connection to the building network for initial setup and configuration. Continuation of VPN connection is required for warranty support.
- e. Building Ethernet to be provided by others for connection to Trane Building Controller for web access.
- f. If additional TAB Support is needed, additional charges may apply.
- g. The currently does not have BACnet controls. The legacy system is no longer supported. BACnet interface must be provided with the new RTU's.

III. Exclusions

The following items are not included in the present scope and must be provided by others.

- a. Furnish, install or wire any items not explicitly called out above, including (but not limited to) controls, control panels, any type of controls interface, display or workstation, thermostats, sensors, or any other controls end devices.
- b. Demolish any existing controls devices or equipment not noted above.
- c. Furnish, install, wire or terminate any panels/devices related any systems not explicitly called out above, including (but not limited to): smoke control systems, fire-life safety systems, lighting control systems, power and/or energy monitoring, security, tenant billing systems, etc.
- d. Furnish any labor related to LEED certification, verification or 3rd party commissioning agent review for any HVAC Equipment or Controls (except as mentioned in scope of work).
- e. Cutting, Patching, painting.
- f. Permits, fees or bonds.
- g. Trenching or backfilling, or any underground conduit.
- h. Asbestos or Hazardous Material Abatement.
- i. Demolition of any kind unless noted above.
- j. Liquidated or Consequential Damages of any kind.
- k. OCIP/CCIP insurance program credit.
- l. After Hours work.

We will furnish the system with the capabilities listed above for the following amount:

Bid (including all applicable taxes).....\$30,301.00

It is agreed that The Trane US Inc. - BAS will supply materials and services specifically listed herein. Any work in addition to that described in this proposal would be performed only with written authorization at the extra charge quoted.

Thank you for your consideration of Trane US Inc. for this project. We look forward to discussing this proposal with you. This proposal is subject to acceptance within 30 days from date of issuance.

Thank you for your consideration of the Trane US Inc. If you have any questions concerning this proposal, please bring them to my attention.



Respectfully,

Joe Cochran
Account Manager Controls

MEMORANDUM OF UNDERSTANDING
BETWEEN
ALPINE FIRE PROTECTION DISTRICT
AND
ASSISTANT FIRE CHIEF
GREG O’GORMAN



JANUARY 1, 2026 – JUNE 30, 2026

Table of Contents

SECTION 1 – INTENT AND PURPOSE	3
SECTION 2 – TERM	3
SECTION 3 – JOB DESCRIPTION	3
SECTION 4 – SALARY	3
SECTION 5 – SICK LEAVE	4
SECTION 6 – UNUSED SICK LEAVE	5
SECTION 7 – MEDICAL COVERAGE AND INSURANCE	5
SECTION 8 – RESERVED FOR FUTURE USE	5
SECTION 9 – RETIREMENT	5
SECTION 10 – HOLIDAYS	6
SECTION 11 – VACATION	7
SECTION 12 – UNIFORMS	7
SECTION 13 – TERMINATION OF EMPLOYMENT	7
SECTION 14 – GRIEVANCE PROCEDURE	8
SECTION 15 – MANAGEMENT CLAUSE	9
SECTION 16 – EDUCATIONAL INCENTIVE	9
SECTION 17 – DEFINED CONTRIBUTION PLAN	9
SECTION 18 – DISTRICT VEHICLE	9
SECTION 19 – MISCELLANEOUS TERMS AND CONDITIONS	9
SIGNATURES	11
EXHIBIT A – EDUCATIONAL INCENTIVE	12

SECTION 1 – INTENT AND PURPOSE

- 1.1 It is the intent and purpose of this Memorandum of Understanding (“**MOU**”) to set forth the understanding of the parties reached as a result of meeting and conferring in good faith regarding, but not limited to, matters relating to wages, hours, and terms and conditions of employment between Greg O’Gorman (“**Employee**”) and the Alpine Fire Protection District (“**District**”).
- 1.2 This agreement is entered into by the parties hereto in anticipation that the California Legislature will provide funding over and above the **District’s** portion of the 1% Tax Base in an amount nearly equal to the employer’s fiscal year 1978/79. In the event such additional funding which would make payment of the employer’s obligation impossible, then this agreement, to the extent that it is affected by lack of adequate funding, shall release the **District** of its obligations to maintain the salary schedule and employee benefits otherwise agreed to herein.

SECTION 2 – TERM

- 2.1 The effective date of this **MOU** shall be January 1, 2026 and shall run through June 30, 2026. **Employee** may terminate their employment with the **District** at any time, with or without reason, by giving advanced written notice to the **District**. **District** may terminate the employment of **Employee** at any time, with or without reason by written notice to *Employee*. This is called “at-will” employment. Nothing contained herein shall modify the **District’s** right to terminate **Employee** for cause.
- 2.2 No one other than the Board of Directors can enter into an agreement relating to employment for a specified amount of time or make any agreement or representations contrary to this Section and then only by written amendment to this **MOU**.

SECTION 3 – JOB DESCRIPTION

- 3.1 The duties of the **Employee** are as outlined in the job description adopted by the **District** and can be found in Alpine Fire Protection District Policy No. 1409.

SECTION 4 – SALARY

- 4.1 The salary for the Employee will be \$210,000 annually and payable semi-monthly.
- 4.2 The **Employee** shall not be entitled to overtime pay. **Employee** shall earn their hourly pay when assigned as an overhead position, with an assigned “O” number, to an incident which exceeds 12-hours. **Employee** is entitled to portal-to-portal pay and will receive the extra hourly pay for those hours assigned to the incident which are not his/her regular work week hours.

- 4.2.1 The **District** shall have the right in its sole discretion to modify paragraph 4.2 upon thirty (30) days written notice to **Employee**.

SECTION 5 – SICK LEAVE

- 5.1 The **Employee** shall be entitled to accrued sick leave without loss of compensation under the following circumstances:
1. For the **Employee's** own illness or injury, or for the illness or injury of a qualifying family member. For the purposes of this section, "family member" includes:
 - a. A biological, adopted, or foster child; stepchild; legal ward; or a child for whom the Employee stands in loco parentis
 - b. A biological, adopted, or foster parent; stepparent; or legal guardian of the Employee or the Employee's spouse or registered domestic partner; or a person who stood in loco parentis to the Employee as a minor
 - c. Spouse or registered domestic partner
 - d. Grandparent, grandchild, or sibling
 2. For the **Employee's** own required medical or dental care or consultation, or that of a qualifying family member.
 3. For circumstances involving the **Employee** as a victim of domestic violence, sexual assault, or stalking, as defined under applicable state law.
 4. The **Employee** may use up to seventy-two (72) hours, or fifty-percent (50%) of the annual sick leave accrual in any calendar year to care for a sick family member as defined above.
- 5.2 On January 1, 2026, Employee will receive 120 hours of sick leave. Unused sick leave shall carry over from one fiscal year to the next.
- 5.3 Eligibility Requirements for Paid Sick Leave – To qualify for paid sick leave, the **Employee** must:
- a. Promptly notify the Fire Chief of the reason for the absence
 - b. Maintain communication with the Fire Chief regarding the Employee's condition if the absence exceeds three (3) consecutive days;
 - c. Permit the **District** to conduct any medical examinations as necessary;
 - d. Upon request by the Fire Chief, provide satisfactory documentation of incapacitation upon return to duty. A written statement from a duly licensed and practicing physician or other recognized medical practitioner indicating the duration and nature of the incapacitation shall constitute satisfactory evidence.

SECTION 6 – UNUSED SICK LEAVE

6.1 **Employee** shall be compensated in cash at the rate of one-quarter of the regular rate of pay for any unused accumulation of sick leave when **Employee** is permanently separated from service by resignation, death, retirement, service retirement, or discharge.

SECTION 7 – MEDICAL COVERAGE AND INSURANCE

7.1 The **District** provides medical coverage and insurance through CalPERS (District Health Care Plan or DHCP) and contracts for supplemental insurance benefits with FRMS for vision, dental, and supplemental life insurance coverage. The monthly Employer Paid Portion (“EPP”) for medical insurance is set at \$260.00 plus 90% of the average base cost of CalPERS Region 2 HMO plans, calculated after excluding the highest- and lowest-cost plans. **Employees** may apply the EPP toward any CalPERS health plan available for which the **Employee** and **District** is eligible and any applicable supplemental insurance coverage. If the monthly premiums for the DHCP and supplemental insurance coverage exceed the EPP, the affected employee will be responsible for the difference.

7.2 Eligible employees covered by this **MOU** may elect to opt out of the DHCP, if proof of alternative group health coverage that complies with the ACA’s health care reform mandates can be provided to the **District**. If an eligible employee opts out of the DHCP, the **District** shall compensate the employee in the amount of \$500.00 per paycheck, minus monthly supplemental insurance benefit amounts chosen by Employee.

7.4 District shall obtain and pay for a Long-Term Disability (LTD) plan for **Employee**. The LTD plan shall be same plan offered to other employees of the District.

7.5 **Employee** shall receive term life insurance in the amount of \$150,000.

SECTION 8 – RESERVED FOR FUTURE USE

8.1 Reserved for future use.

SECTION 9 – RETIREMENT

9.1 The **District** maintains contracts with CalPERS for the following retirement benefits. CalPERS determines applicable formulas.

Classic Tier 1

Membership on or before December 31, 2011:

A	3% at 50	Govt. Code Section 21362.2
B	1959 Survivor Level 4	Govt. Code Section 21382.5
C	Credit for Military Service Prior to Employment	Govt. Code Section 21024
D	Employer Paid Contribution (0% of members contribution paid by Employer) Employee Paid Contributions (10%)	Govt. Code Section 20636(c)(4)

E	Single Highest Year Benefit	Govt. Code Section 20042
F	Sick Leave Credit	Govt. Code Section 20965

Classic Tier 2

Membership in CalPERS was on or after January 1, 2012, but before December 21, 2012

A	3% at 55	Govt. Code Section 21362.2
B	1959 Survivor Level 4	Govt. Code Section 21382.5
C	Credit for Military Service Prior to Employment	Govt. Code Section 21024
D	Employer Paid Contribution (0% of members contribution paid by Employer) Employee Paid Contributions (10%)	Govt. Code Section 20636(c)(4)
E	Three Year average benefit	Govt. Code Section 20042
F	Sick Leave Credit	Govt. Code Section 20965

PEPRA Safety

Employees hired on or after January 1, 2013

A	PEPRA	
B	1959 Survivor Level 4	Govt. Code Section 21382.5
C	Credit for Military Service Prior to Employment	Govt. Code Section 21024
D	Three year average benefit	Govt. Code Section 20042
F	Sick Leave Credit	Govt. Code Section 20965

9.2 **District** will pay no portion of the **Employee** contribution which shall be solely paid by the Employee.

SECTION 10 – HOLIDAYS

10.1 The following annual holidays shall be recognized:

New Years Day	Labor Day
Martin Luther King Jr. Day	Veterans Day
Presidents Day	Thanksgiving Day
Memorial Day	Day after Thanksgiving
Fourth of July	Christas Day
Columbus Day	

10.2 “In-Lieu” Holiday – If the recognized holiday from Article 10.1 is observed on the **Employee’s** regular day off (RDO), the **Employee’s** “in-lieu” holiday will be observed on the preceding regularly scheduled workday. For example, if the Employee’s RDO is Friday, and the **District** recognizes the holiday on the same Friday, the “in-lieu” holiday is on Thursday. With

permission from the Fire Chief, the **Employee** may elect to observe the “in-lieu” holiday on the employee’s next regularly scheduled working day.

SECTION 11 – VACATION

11.1 On January 1, 2026, **Employee** will receive 100 hours of vacation time.

11.2 When **Employee** is separated from employment by resignation, death, retirement, or discharge, **Employee** will be compensated for all unused vacation time accumulated, at the regular rate of pay at the time of separation.

11.3 The maximum accumulated total which may be carried in vacation time from one fiscal year to the next is seventy-two (72) hours, remaining balance of vacation hours will be cashed out at the regular rate of pay.

11.4 Upon employment, **Employee** shall receive 20 hours of Administrative Leave to be used outside of scheduled vacation time. Administrative Leave has no cash value and unused leave will not be carried over from year to year.

SECTION 12 – UNIFORMS

12.1 Any protective clothing or protective devices required of **Employee** in the performance of his duties shall be furnished by the **District**, in accordance with State law and Cal/OSHA regulations.

SECTION 13 – TERMINATION OF EMPLOYMENT

13.1 This **MOU** shall terminate upon the occurrence of the earliest of any of the following events, without further liability by the District to the Employee:

- a. Voluntary retirement or resignation by **Employee** with 30 days written notice;
- b. Death of **Employee**;
- c. Discharge of **Employee** by **District** for “cause” as provided in Section 13.2;
- d. Discharge of **Employee** by **District** other than for “cause” with 30-days written notice.

13.2 **Employee** may be terminated by **District** with notice for “cause”, as determined by the Board of Directors. The term “cause”, as used herein with respect to the termination of employment, shall mean the following:

- a. **Employee’s** incompetence or repeated failure or refusal to perform **Employee’s** material obligations under this **MOU**;
- b. **Employee’s** inability or unwillingness to effectively implement and carry out the policies and directives of **District** as established by the Board of Directors;
- c. Fraud, theft, malfeasance, embezzlement or other misappropriation of **District** resources by **Employee**;

- d. Breach of **Employee's** fiduciary duty of loyalty or other fiduciary duties to the District;
- e. Conduct by **Employee** which tends to bring embarrassment or disrepute to District; or
- f. Being charged in a court of competent jurisdiction with committing a felony or misdemeanor (other than simple traffic violations).

SECTION 14 – GRIEVANCE PROCEDURE

14.1 Definition: A grievance or dispute is defined as an alleged violation of the express provisions of this Memorandum of Understanding which personally and adversely affects **Employee**. A grievance shall not include any claim regarding the initiation or renewal of a Memorandum of Understanding.

14.2 General Provision: All grievances shall be filed in writing within fifteen (15) days of the date on which **Employee** knew or reasonably should have known of the alleged grievable incident. Any grievance not timely filed or appealed within specified time limits shall be null and void.

14.2.1 A written statement of grievance shall identify the specific provision or provisions of this Memorandum of Understanding alleged to have been violated. Also, a statement of grievance shall set forth the specific factual information which gives rise to the filing of the grievance.

14.2.2 Time limits provided for herein may be extended through mutual written consent of the parties.

14.2.3 Except where a grievance is resolved or ruled upon by the Board of Directors, all grievance resolutions involving the commitment of the **District** funds shall be subject to the written approval of the Fire Chief.

14.2.4 Parties to the grievance procedure shall be entitled to have a representative to act in his or her behalf at each step of the grievance procedure.

14.3 Procedures

14.3.1 The parties shall attempt to adjust all grievances on an informal basis between Employee and the Fire Chief.

14.3.2 If the grievant does not agree with the Fire Chief's proposed resolution of the grievance, **Employee** shall submit the written grievance to the Board of Directors for the adjustment and/or decision. In order to be effective, the grievant's appeal to the Board of Directors regarding the grievance must be filed with the Board of Director's no later than five (5) days from the date on which the Fire Chief rendered his written decision. All written materials and rationale which are to be submitted by the grievant to the Board of

Directors shall be served upon the Fire Chief at the time the grievance is appealed to the Board of Directors.

Both the grievant, the grievant's representative, and the Fire Chief shall be given an opportunity to argue their position on the grievance to the Board of Directors prior to its determination upon the merits of the grievance. The grievant and representative and the Fire Chief shall be notified in writing of the Board's decision on the grievance.

SECTION 15 – MANAGEMENT CLAUSE

15.1 **Employee** is considered management under the Fair Labor Standards Act of 1985, Title 29 United States Code. **Employee** shall also be considered an exempt employee under California law.

SECTION 16 – EDUCATIONAL INCENTIVE

16.1 In addition to the salary set forth in Section 4.1 of this **MOU**, **Employee** shall be paid a monthly stipend for successful completion of the educational plan attached hereto as Exhibit "A" capped at 8% per year. This stipend shall be paid on a bi-weekly basis and included in the **Employee's** regular paycheck.

SECTION 17 – DEFINED CONTRIBUTION PLAN

17.1 **District** shall offer all full-time employees a 457(b) plan.

17.2 **District** shall offer **Employee** a 401(a) plan. If **Employee** makes a minimum deposit of \$200 per month into a 457(b) plan, then the **District** will contribute up to 5% of that amount up to a maximum contribution of \$1000 per year into the 457(a) plan.

SECTION 18 – DISTRICT VEHICLE

18.1 Due to the requirements by **District** that the **Employee** is able to respond to emergencies from their home, **District** shall provide **Employee** with the use of a **District** vehicle. **Employee's** use of the **District** vehicle shall be subject to all rules and regulations established by the **District**. **Employee's** use of the **District** vehicle may be revoked or suspended for non-compliance with District rules and regulations.

SECTION 19 – MISCELLANEOUS TERMS AND CONDITIONS

19.1 This **MOU** shall be governed by and construed in accordance with the laws of the State of California.

19.2 Each party acknowledges that it has the opportunity to consult an attorney of its choice to explain the terms of this **MOU** and the consequences of its execution, and that any failure to consult with an attorney prior to executing this **MOU** shall not be grounds for invalidating the full force and effect of the executed **MOU**. This **MOU** shall not be interpreted for or against either party based on their roles in drafting this **MOU**.

19.3 This **MOU** may be executed in several counterparts and all so executed shall constitute one agreement which shall be binding on all parties hereto, notwithstanding that all the parties are no signatory to the original or same counterpart.

“SIGNATURES ON NEXT PAGE”

SIGNATURES

WITNESS THEREOF: The parties hereto have executed this Memorandum of Understanding, between Greg O’Gorman and the Board of Directors of the Alpine Fire Protection District:

ALPINE FIRE PROTECTION DISTRICT

Steve Taylor, President

Date

Tim Mehrer, Secretary

Date

EMPLOYEE

Greg O’Gorman

Date

EXHIBIT A – EDUCATIONAL INCENTIVE

EDUCATION	PERCENT
Bachelor's Degree	6%
Paramedic License	1%
Strike Team Leader	1%